

Datasheet for ABIN6746989  
**anti-ACSL1 antibody (AA 619-668)**

## 2 Images

[Go to Product page](#)

## Overview

Quantity:	100 µL
Target:	ACSL1 (Acsl1)
Binding Specificity:	AA 619-668
Reactivity:	Human, Mouse, Rat, Guinea Pig, Horse, Pig
Host:	Rabbit
Clonality:	Polyclonal
Conjugate:	This ACSL1 antibody is un-conjugated
Application:	Western Blotting (WB), Immunohistochemistry (IHC), Immunohistochemistry (Paraffin-embedded Sections) (IHC (p))

## Product Details

Brand:	IHC-plus™
Immunogen:	Synthetic peptide located between aa619-668 of human ACSL1 (P33121, NP_001986). Percent identity by BLAST analysis: Human, Chimpanzee, Gorilla, Orangutan, Gibbon, Galago, Mouse, Rat (100%), Monkey, Marmoset, Panda, Dog, Bovine, Opossum, Platypus (92%), Horse (84%).  Type of Immunogen: Synthetic peptide
Isotype:	IgG
Specificity:	Human ACSL1
Predicted Reactivity:	Percent identity by BLAST analysis: Human, Mouse, Rat (100%) Dog, Bovine (92%) Horse (84%).
Purification:	Immunoaffinity purified

## Target Details

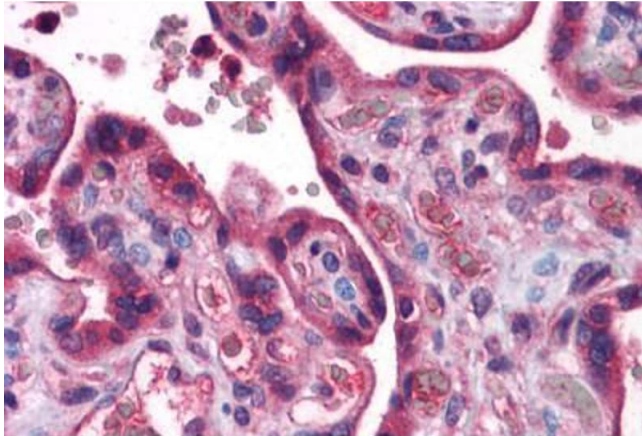
Target:	ACSL1 (Acs11)
Alternative Name:	FACL2 / ACSL1 ( <a href="#">Acs11 Products</a> )
Background:	Name/Gene ID: ACSL1  Synonyms: ACSL1, ACS1, Acyl-CoA synthetase 1, FACL1, LACS2, LACS, Palmitoyl-CoA ligase 1, Palmitoyl-CoA ligase 1, LACS 1, LACS 2, Lignoceroyl-CoA synthase, Palmitoyl-CoA ligase 2, FACL2, LACS1
Gene ID:	2180
NCBI Accession:	<a href="#">NP_001986</a>
UniProt:	<a href="#">P33121</a>
Pathways:	<a href="#">Regulation of Lipid Metabolism by PPARAlpha</a>

## Application Details

Application Notes:	Approved: IHC, IHC-P (5 µg/mL), WB (0.2 - 1 µg/mL)
Comment:	Target Species of Antibody: Human
Restrictions:	For Research Use only

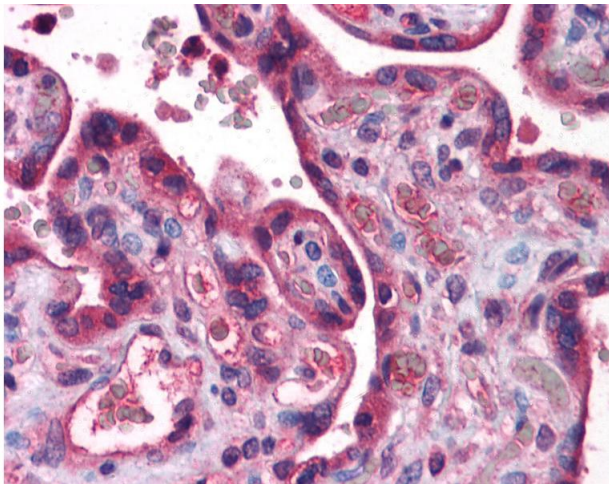
## Handling

Format:	Lyophilized
Reconstitution:	After adding water, will consist of PBS buffer with 2 % sucrose
Concentration:	Lot specific
Buffer:	Lyophilized from PBS with 2 % sucrose
Handling Advice:	Avoid repeat freeze-thaw cycles.
Storage:	4 °C, -20 °C
Storage Comment:	Long term: -20°C, the use of 50% glycerol is recommended if storing aliquots in -20°C for long term use (up to 1 year) Short term (less than 1 week): 4°C. Avoid freeze-thaw cycles.



#### Immunohistochemistry (Formalin-fixed Paraffin-embedded Sections)

**Image 1.** Human Placenta: Formalin-Fixed, Paraffin-Embedded (FFPE)



#### Immunohistochemistry

**Image 2.** Anti-ACSL1 antibody IHC of human placenta. Immunohistochemistry of formalin-fixed, paraffin-embedded tissue after heat-induced antigen retrieval. Antibody concentration 5 ug/ml. This image was taken for the unconjugated form of this product. Other f ...