

Datasheet for ABIN6746990
anti-WDHD1 antibody (AA 611-660)[Go to Product page](#)

2 Images

Overview

Quantity:	100 µL
Target:	WDHD1
Binding Specificity:	AA 611-660
Reactivity:	Human, Cow, Dog, Pig, Rabbit, Bat
Host:	Rabbit
Clonality:	Polyclonal
Conjugate:	This WDHD1 antibody is un-conjugated
Application:	Western Blotting (WB), Immunohistochemistry (IHC), Immunohistochemistry (Paraffin-embedded Sections) (IHC (p))

Product Details

Brand:	IHC-plus™
Immunogen:	<p>Synthetic peptide located between aa611-660 of human WDHD1 (O75717, NP_009017).</p> <p>Percent identity by BLAST analysis: Human, Chimpanzee, Gorilla, Gibbon, Dog, Bovine, Bat, Rabbit, Pig (100%), Monkey, Marmoset, Mouse, Rat, Elephant, Horse, Zebra finch (92%), Galago, Opossum, Turkey, Chicken, Platypus, Xenopus (85%).</p> <p>Type of Immunogen: Synthetic peptide</p>
Specificity:	Human WDHD1
Predicted Reactivity:	Percent identity by BLAST analysis: Human, Dog, Bovine, Rabbit, Pig (100%) Mouse, Rat, Horse (92%) Chicken, Xenopus (85%).

Product Details

Purification: Immunoaffinity purified

Target Details

Target: WDHD1

Alternative Name: WDHD1 ([WDHD1 Products](#))

Background: Name/Gene ID: WDHD1

Synonyms: WDHD1, AND-1, CTF4, AND1, CHTF4

Gene ID: 11169

NCBI Accession: [NP_009017](#)

UniProt: [O75717](#)

Application Details

Application Notes: Approved: IHC, IHC-P (5 µg/mL), WB (0.2 - 1 µg/mL)

Usage: Western Blot: Suggested dilution at 1 µg/mL in 5 % skim milk / PBS buffer, and HRP conjugated anti-Rabbit IgG should be diluted in 1: 50,000 - 100,000 as secondary antibody.

Comment: Target Species of Antibody: Human

Restrictions: For Research Use only

Handling

Format: Lyophilized

Reconstitution: Distilled water

Concentration: Lot specific

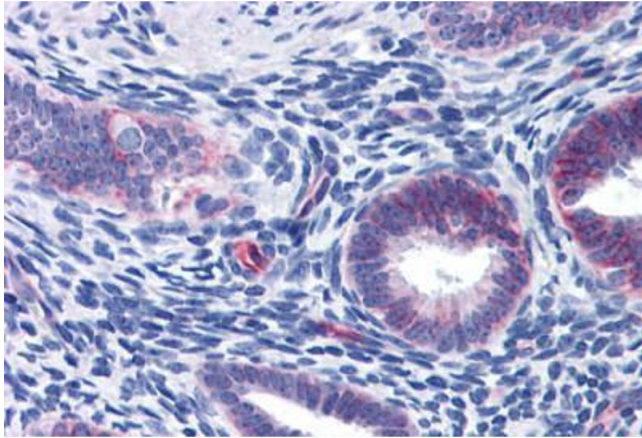
Buffer: Lyophilized from PBS with 2 % sucrose

Handling Advice: Avoid repeat freeze-thaw cycles.

Storage: 4 °C, -20 °C

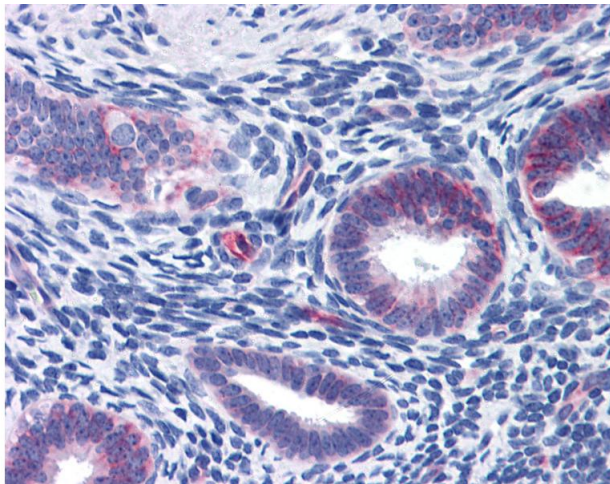
Storage Comment: Long term: -20°C, the use of 50% glycerol is recommended if storing aliquots in -20°C for long term use (up to 1 year)

Short term (less than 1 week): 4°C. Avoid freeze-thaw cycles.



Immunohistochemistry (Formalin-fixed Paraffin-embedded Sections)

Image 1. Human Uterus: Formalin-Fixed, Paraffin-Embedded (FFPE)



Immunohistochemistry

Image 2. Anti-WDHD1 antibody IHC of human uterus. Immunohistochemistry of formalin-fixed, paraffin-embedded tissue after heat-induced antigen retrieval. Antibody concentration 5 ug/ml. This image was taken for the unconjugated form of this product. Other for ...