

Datasheet for ABIN6746993
anti-BCL11B antibody (AA 395-444)[Go to Product page](#)

2 Images

Overview

Quantity:	100 µL
Target:	BCL11B
Binding Specificity:	AA 395-444
Reactivity:	Human, Mouse, Rat, Cow, Dog, Rabbit, Guinea Pig, Pig, Bat, Monkey
Host:	Rabbit
Clonality:	Polyclonal
Conjugate:	This BCL11B antibody is un-conjugated
Application:	Western Blotting (WB), Immunohistochemistry (IHC), Immunohistochemistry (Paraffin-embedded Sections) (IHC (p))

Product Details

Brand:	IHC-plus™
Immunogen:	<p>Synthetic peptide located between aa395-444 of human BCL11B (Q9C0K0-2, NP_075049). Percent identity by BLAST analysis: Human, Chimpanzee, Gorilla, Gibbon, Baboon, Monkey, Galago, Marmoset, Mouse, Rat, Shrew, Elephant, Dog, Bovine, Bat, Rabbit, Pig, Guinea pig, Armadillo (100%), Platypus, Xenopus (91%).</p> <p>Type of Immunogen: Synthetic peptide</p>
Specificity:	Human BCL11B
Predicted Reactivity:	Percent identity by BLAST analysis: Human, Mouse, Rat, Dog, Bovine, Rabbit, Pig, Guinea pig (100%).

Product Details

Purification: Immunoaffinity purified

Target Details

Target: BCL11B

Alternative Name: BCL11B ([BCL11B Products](#))

Background: Name/Gene ID: BCL11B
Family: Cancer

Synonyms: BCL11B, B-cell CLL/lymphoma 11B, B-cell lymphoma/leukaemia 11B, B-cell lymphoma/leukemia 11B, BCL-11B, BCL11B/TRDC fusion, CTIP-2, COUP-TF-interacting protein 2, ZNF856B, CTIP2, HRIT1, HRIT1-alpha

Gene ID: 64919

NCBI Accession: [NP_075049](#)

UniProt: [Q9C0K0](#)

Application Details

Application Notes: Approved: IHC, IHC-P (5 µg/mL), WB (0.2 - 1 µg/mL)

Usage: Western Blot: Suggested dilution at 1 µg/mL in 5 % skim milk / PBS buffer, and HRP conjugated anti-Rabbit IgG should be diluted in 1: 50,000 - 100,000 as secondary antibody.

Comment: Target Species of Antibody: Human

Restrictions: For Research Use only

Handling

Format: Lyophilized

Reconstitution: Distilled water

Concentration: Lot specific

Buffer: Lyophilized from PBS with 2 % sucrose

Handling Advice: Avoid repeat freeze-thaw cycles.

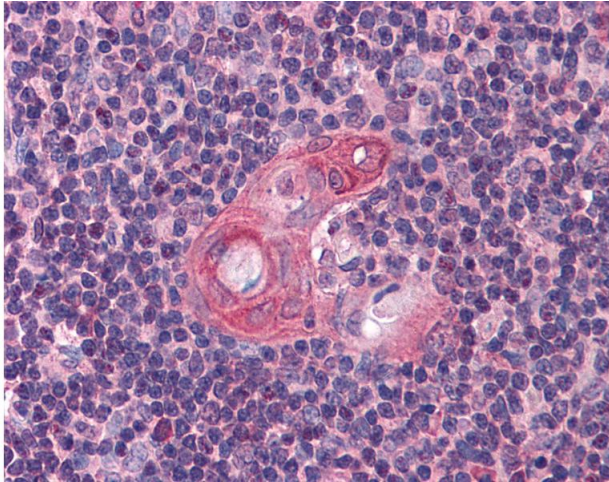
Storage: 4 °C, -20 °C

Handling

Storage Comment: Long term: -20°C, the use of 50% glycerol is recommended if storing aliquots in -20°C for long term use (up to 1 year)

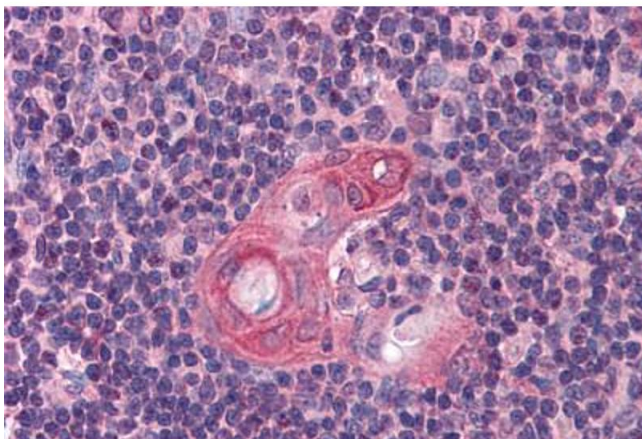
Short term (less than 1 week): 4°C. Avoid freeze-thaw cycles.

Images



Immunohistochemistry

Image 1. Anti-BCL11B antibody IHC of human thymus. Immunohistochemistry of formalin-fixed, paraffin-embedded tissue after heat-induced antigen retrieval. Antibody concentration 5 ug/ml. This image was taken for the unconjugated form of this product. Other fo ...



Immunohistochemistry (Formalin-fixed Paraffin-embedded Sections)

Image 2. Human Thymus: Formalin-Fixed, Paraffin-Embedded (FFPE)