

Datasheet for ABIN6746994
anti-SLUG antibody (AA 92-141)

2 Images

[Go to Product page](#)

Overview

Quantity:	100 µL
Target:	SLUG (SNAI2)
Binding Specificity:	AA 92-141
Reactivity:	Human, Cow, Sheep, Rabbit, Dog, Horse, Guinea Pig, Pig, Chicken, Monkey, Bat
Host:	Rabbit
Clonality:	Polyclonal
Conjugate:	This SLUG antibody is un-conjugated
Application:	Western Blotting (WB), Immunohistochemistry (IHC), Immunohistochemistry (Paraffin-embedded Sections) (IHC (p))

Product Details

Brand:	IHC-plus™
Immunogen:	Synthetic peptide located between aa92-141 of human SNAI2 (O43623, NP_003059). Percent identity by BLAST analysis: Human, Chimpanzee, Gorilla, Gibbon, Monkey, Galago, Marmoset, Sheep, Elephant, Panda, Dog, Bovine, Bat, Rabbit, Horse, Pig, Guinea pig, Turkey, Zebra finch, Chicken (100%), Mouse, Rat, Hamster, Opossum (92%), Platypus, Xenopus (85%). Type of Immunogen: Synthetic peptide
Isotype:	IgG
Specificity:	Human SNAI2 / SLUG
Predicted Reactivity:	Percent identity by BLAST analysis: Human, Sheep, Dog, Bovine, Horse, Pig, Chicken (100%)

Product Details

Mouse, Rat (92%) Xenopus (85%).

Purification: Immunoaffinity purified

Target Details

Target: SLUG (SNAI2)

Alternative Name: SNAI2 / SLUG ([SNAI2 Products](#))

Background: Name/Gene ID: SNAI2
Family: Zinc Finger

Synonyms: SNAI2, SLUG, SLUGH1, Snail homolog 2 (Drosophila), SNAI2, SLUGH, Protein snail homolog 2, WS2D, Zinc finger protein SNAI2

Gene ID: 6591

NCBI Accession: [NP_003059](#)

UniProt: [O43623](#)

Application Details

Application Notes: Approved: IHC, IHC-P (5 µg/mL), WB (0.2 - 1 µg/mL)

Comment: Target Species of Antibody: Human

Restrictions: For Research Use only

Handling

Format: Lyophilized

Reconstitution: After adding water, will consist of PBS buffer with 2 % sucrose

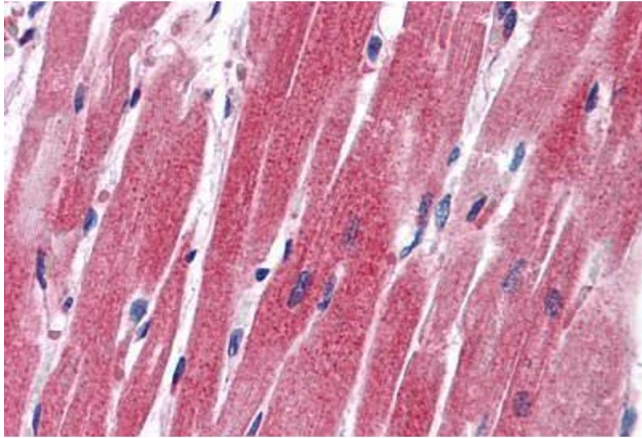
Concentration: Lot specific

Buffer: Lyophilized from PBS with 2 % sucrose

Handling Advice: Avoid repeat freeze-thaw cycles.

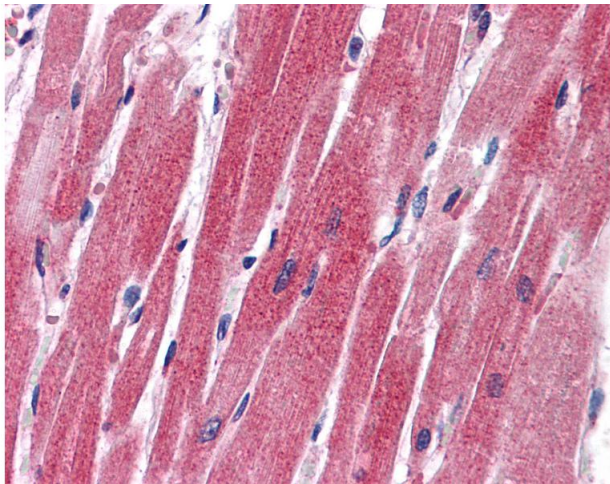
Storage: 4 °C, -20 °C

Storage Comment: Long term: -20°C, the use of 50% glycerol is recommended if storing aliquots in -20°C for long term use (up to 1 year)
Short term (less than 1 week): 4°C. Avoid freeze-thaw cycles.



Immunohistochemistry (Formalin-fixed Paraffin-embedded Sections)

Image 1. Human Heart: Formalin-Fixed, Paraffin-Embedded (FFPE)



Immunohistochemistry

Image 2. Anti-SNAI2 / SLUG antibody IHC of human heart. Immunohistochemistry of formalin-fixed, paraffin-embedded tissue after heat-induced antigen retrieval. Antibody concentration 5 ug/ml. This image was taken for the unconjugated form of this product. Oth ...