



[Go to Product page](#)

Datasheet for ABIN6746996

## anti-ZEB2 antibody (AA 30-79)

### 2 Images

#### Overview

Quantity:	100 µL
Target:	ZEB2
Binding Specificity:	AA 30-79
Reactivity:	Human, Rabbit, Cow, Guinea Pig, Monkey, Zebrafish (Danio rerio)
Host:	Rabbit
Clonality:	Polyclonal
Conjugate:	This ZEB2 antibody is un-conjugated
Application:	Western Blotting (WB), Immunohistochemistry (IHC), Immunohistochemistry (Paraffin-embedded Sections) (IHC (p))

#### Product Details

Brand:	IHC-plus™
Immunogen:	Synthetic peptide located between aa30-79 of human ZEB2 (O60315, NP_055610). Percent identity by BLAST analysis: Human, Chimpanzee, Gorilla, Orangutan, Gibbon, Monkey, Galago, Marmoset, Elephant, Rabbit, Opossum, Guinea pig (100%), Mouse, Rat, Dog, Bat, Horse, Turkey, Zebra finch, Chicken, Xenopus (92%), Bovine, Platypus (85%).  Type of Immunogen: Synthetic peptide
Isotype:	IgG
Specificity:	Human ZEB2
Predicted Reactivity:	Percent identity by BLAST analysis: Human, Orangutan (100%) Mouse, Rat, Xenopus (92%)

## Product Details

---

Bovine (85%).

Purification: Immunoaffinity purified

## Target Details

---

Target: ZEB2

Alternative Name: ZEB2 ([ZEB2 Products](#))

Background: Name/Gene ID: ZEB2

Synonyms: ZEB2, KIAA0569, SIP1, SMADIP1, ZFX1B, SIP-1, SMAD interacting protein 1, Smad-interacting protein 1, ZFHX1B, Zinc finger homeobox 1b, HSPC082

Gene ID: 9839

NCBI Accession: [NP\\_055610](#)

UniProt: [O60315](#)

Pathways: [Tube Formation](#)

## Application Details

---

Application Notes: Approved: IHC, IHC-P (5 µg/mL), WB

Comment: Target Species of Antibody: Human

Restrictions: For Research Use only

## Handling

---

Format: Lyophilized

Reconstitution: After adding water, will consist of PBS buffer with 2 % sucrose

Concentration: Lot specific

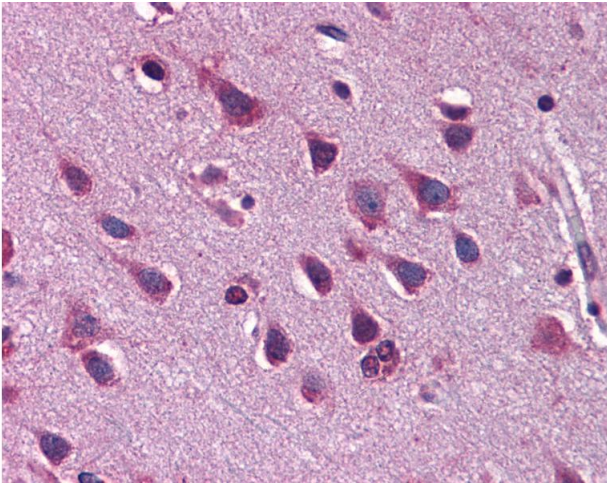
Buffer: Lyophilized from PBS with 2 % sucrose

Handling Advice: Avoid repeat freeze-thaw cycles.

Storage: 4 °C,-20 °C

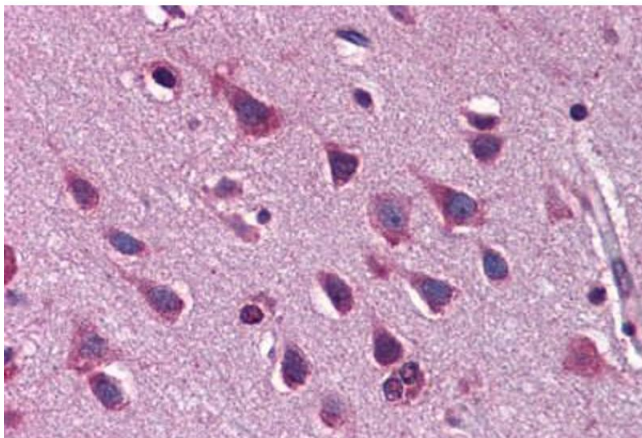
Storage Comment: Long term: -20°C, the use of 50% glycerol is recommended if storing aliquots in -20°C for long term use (up to 1 year)

Short term (less than 1 week): 4°C. Avoid freeze-thaw cycles.



### Immunohistochemistry

**Image 1.** Anti-ZEB2 antibody IHC of human brain, cortex. Immunohistochemistry of formalin-fixed, paraffin-embedded tissue after heat-induced antigen retrieval. Antibody concentration 5 ug/ml. This image was taken for the unconjugated form of this product. Oth ...



### Immunohistochemistry (Formalin-fixed Paraffin-embedded Sections)

**Image 2.** Human Brain, Cortex: Formalin-Fixed, Paraffin-Embedded (FFPE)