

Datasheet for ABIN6746998
anti-SLC1A2 antibody (AA 467-516)

2 Images

[Go to Product page](#)

Overview

Quantity:	100 µL
Target:	SLC1A2
Binding Specificity:	AA 467-516
Reactivity:	Human, Rat, Mouse, Rabbit, Cow, Dog, Guinea Pig, Horse
Host:	Rabbit
Clonality:	Polyclonal
Conjugate:	This SLC1A2 antibody is un-conjugated
Application:	Western Blotting (WB), Immunohistochemistry (IHC), Immunohistochemistry (Paraffin-embedded Sections) (IHC (p))

Product Details

Brand:	IHC-plus™
Immunogen:	Synthetic peptide located between aa467-516 of human SLC1A2 (P43004, NP_004162). Percent identity by BLAST analysis: Human, Mouse, Rat, Dog, Bovine, Rabbit, Horse, Guinea pig, (100%), Zebrafish (91%).
Specificity:	Human SLC1A2 / EAAT2
Predicted Reactivity:	Percent identity by BLAST analysis: Human, Mouse, Rat, Dog, Bovine, Rabbit, Pig, Guinea pig, Chicken (100%) Zebrafish (92%).
Purification:	Immunoaffinity purified

Target Details

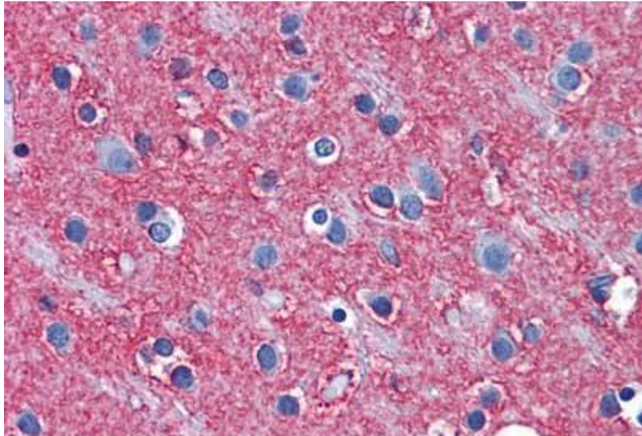
Target:	SLC1A2
Alternative Name:	SLC1A2 / EAAT2 / GLT-1 (SLC1A2 Products)
Background:	Name/Gene ID: SLC1A2 Subfamily: Sodium:dicarboxylate symporter Family: Transporter Synonyms: SLC1A2, EAAT-2, GLT-1, Glutamate transporter 1, EAAT2, GLT1
Gene ID:	6506
NCBI Accession:	NP_004162
UniProt:	P43004
Pathways:	Dicarboxylic Acid Transport

Application Details

Application Notes:	Approved: IHC, IHC-P (5 µg/mL), WB (0.2 - 1 µg/mL) Usage: Western Blot: Suggested dilution at 1 µg/mL in 5 % skim milk / PBS buffer, and HRP conjugated anti-Rabbit IgG should be diluted in 1: 50,000 - 100,000 as secondary antibody.
Comment:	Target Species of Antibody: Human
Restrictions:	For Research Use only

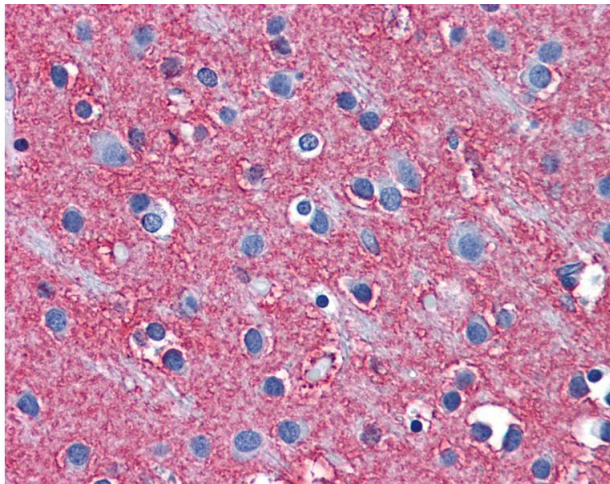
Handling

Format:	Lyophilized
Reconstitution:	Distilled water
Concentration:	Lot specific
Buffer:	Lyophilized from PBS with 2 % sucrose
Handling Advice:	Avoid repeat freeze-thaw cycles.
Storage:	4 °C, -20 °C
Storage Comment:	Long term: -20°C, the use of 50% glycerol is recommended if storing aliquots in -20°C for long term use (up to 1 year) Short term (less than 1 week): 4°C. Avoid freeze-thaw cycles.



Immunohistochemistry (Formalin-fixed Paraffin-embedded Sections)

Image 1. Human Brain, Cortex: Formalin-Fixed, Paraffin-Embedded (FFPE)



Immunohistochemistry

Image 2. Anti-SLC1A2 / EAAT2 antibody IHC of human brain, cortex. Immunohistochemistry of formalin-fixed, paraffin-embedded tissue after heat-induced antigen retrieval. Antibody concentration 5 ug/ml. This image was taken for the unconjugated form of this pr ...