



[Go to Product page](#)

Datasheet for ABIN6747000
anti-CHD4 antibody (AA 71-120)

2 Images

Overview

Quantity:	100 µL
Target:	CHD4
Binding Specificity:	AA 71-120
Reactivity:	Human, Mouse, Rat, Pig, Cow, Dog, Guinea Pig, Horse, Rabbit, Bat, Chicken, Monkey, Xenopus laevis
Host:	Rabbit
Clonality:	Polyclonal
Conjugate:	This CHD4 antibody is un-conjugated
Application:	Western Blotting (WB), Immunohistochemistry (IHC), Immunohistochemistry (Paraffin-embedded Sections) (IHC (p))

Product Details

Brand:	IHC-plus™
Immunogen:	Synthetic peptide located between aa71-120 of human CHD4 (Q14839, NP_001264). Percent identity by BLAST analysis: Human, Chimpanzee, Gorilla, Gibbon, Galago, Marmoset, Mouse, Rat, Elephant, Panda, Dog, Bovine, Bat, Rabbit, Horse, Pig, Guinea pig, Turkey, Zebra finch, Chicken, Platypus, Xenopus (100%), Zebrafish (92%). Type of Immunogen: Synthetic peptide
Specificity:	Human CHD4
Predicted Reactivity:	Percent identity by BLAST analysis: Human, Mouse, Rat, Dog, Bovine, Rabbit, Horse, Pig, Guinea

Product Details

pig, Chicken, Xenopus (100%) Zebrafish (85%).

Purification: Immunoaffinity purified

Target Details

Target: CHD4

Alternative Name: CHD4 ([CHD4 Products](#))

Background: Name/Gene ID: CHD4

Synonyms: CHD4, ATP-dependent helicase CHD4, CHD-4, Mi-2b, Mi2-BETA

Gene ID: 1108

NCBI Accession: [NP_001264](#)

UniProt: [Q14839](#)

Application Details

Application Notes: Approved: IHC, IHC-P (5 µg/mL), WB (0.2 - 1 µg/mL)

Usage: Western Blot: Suggested dilution at 1 µg/mL in 5 % skim milk / PBS buffer, and HRP conjugated anti-Rabbit IgG should be diluted in 1: 50,000 - 100,000 as secondary antibody.

Comment: Target Species of Antibody: Human

Restrictions: For Research Use only

Handling

Format: Lyophilized

Reconstitution: Distilled water

Concentration: Lot specific

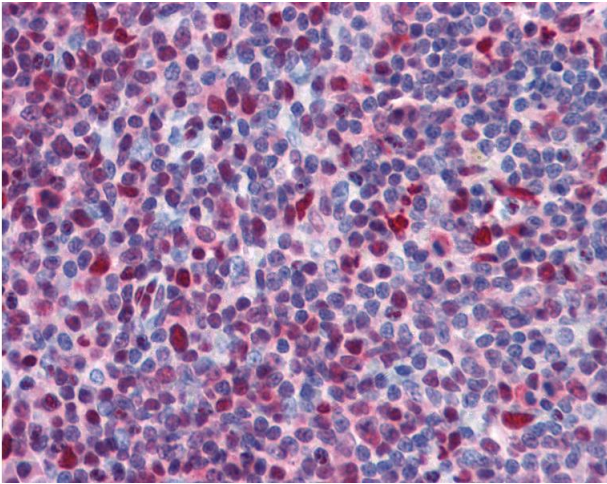
Buffer: Lyophilized from PBS with 2 % sucrose

Handling Advice: Avoid repeat freeze-thaw cycles.

Storage: 4 °C, -20 °C

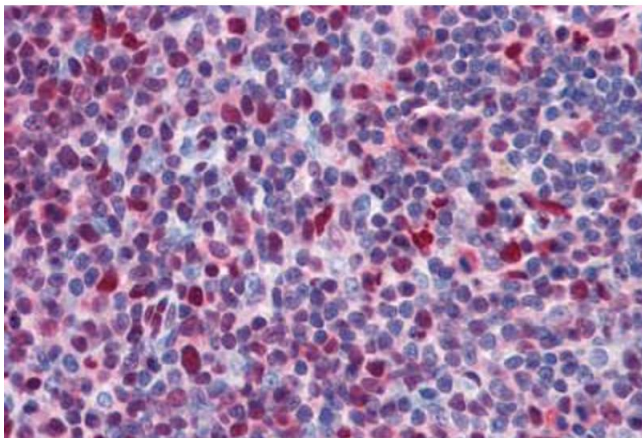
Storage Comment: Long term: -20°C, the use of 50% glycerol is recommended if storing aliquots in -20°C for long term use (up to 1 year)

Short term (less than 1 week): 4°C. Avoid freeze-thaw cycles.



Immunohistochemistry

Image 1. Anti-CHD4 antibody IHC of human tonsil. Immunohistochemistry of formalin-fixed, paraffin-embedded tissue after heat-induced antigen retrieval. Antibody concentration 5 ug/ml. This image was taken for the unconjugated form of this product. Other form ...



Immunohistochemistry (Formalin-fixed Paraffin-embedded Sections)

Image 2. Human Tonsil: Formalin-Fixed, Paraffin-Embedded (FFPE)