



Datasheet for ABIN6747003
anti-ZFAND6 antibody (C-Term)



[Go to Product page](#)

2 Images

Overview

Quantity:	100 µL
Target:	ZFAND6
Binding Specificity:	C-Term
Reactivity:	Human, Dog, Mouse, Rat, Cow, Guinea Pig, Horse, Rabbit, Pig, Hamster, Monkey, Chicken, Bat
Host:	Rabbit
Clonality:	Polyclonal
Conjugate:	This ZFAND6 antibody is un-conjugated
Application:	Western Blotting (WB), Immunohistochemistry (IHC), Immunohistochemistry (Paraffin-embedded Sections) (IHC (p))

Product Details

Brand:	IHC-plus™
Immunogen:	Synthetic peptide from C-Terminus of human ZFAND6 (Q6FIF0, NP_061879). Percent identity by BLAST analysis: Human, Chimpanzee, Gorilla, Orangutan, Gibbon, Monkey, Galago, Marmoset, Mouse, Rat, Hamster, Elephant, Panda, Dog, Bovine, Bat, Rabbit, Horse, Pig, Opossum, Guinea pig, Turkey, Zebra finch, Chicken, Platypus (100%), Xenopus (93%), Salmon (86%). Type of Immunogen: Synthetic peptide
Specificity:	Human ZFAND6
Predicted Reactivity:	Percent identity by BLAST analysis: Dog, Rabbit, Pig, Chicken (100%) Xenopus (93%).

Product Details

Purification: Immunoaffinity purified

Target Details

Target: ZFAND6

Alternative Name: ZFAND6 ([ZFAND6 Products](#))

Background: Name/Gene ID: ZFAND6
Family: Zinc Finger

Synonyms: ZFAND6, AN1-type zinc finger protein 6, Associated with PRK1 protein, AWP1, Protein associated with PRK1, ZA20D3, ZFAND5B, Zinc finger, AN1-type domain 6

Gene ID: 54469

NCBI Accession: [NP_061879](#)

UniProt: [Q6FIF0](#)

Application Details

Application Notes: Approved: IHC, IHC-P (5 µg/mL), WB (0.2 - 1 µg/mL)

Usage: Western Blot: Suggested dilution at 1 µg/mL in 5 % skim milk / PBS buffer, and HRP conjugated anti-Rabbit IgG should be diluted in 1: 50,000 - 100,000 as secondary antibody.

Comment: Target Species of Antibody: Human

Restrictions: For Research Use only

Handling

Format: Lyophilized

Reconstitution: Distilled water

Concentration: Lot specific

Buffer: Lyophilized from PBS with 2 % sucrose

Handling Advice: Avoid repeat freeze-thaw cycles.

Storage: 4 °C, -20 °C

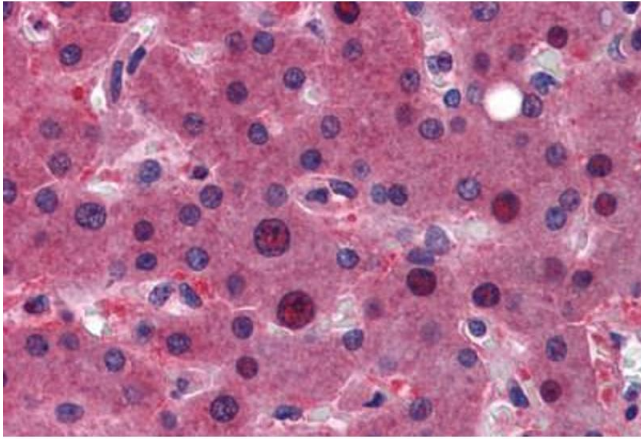
Storage Comment: Long term: -20°C, the use of 50% glycerol is recommended if storing aliquots in -20°C for long

Handling

term use (up to 1 year)

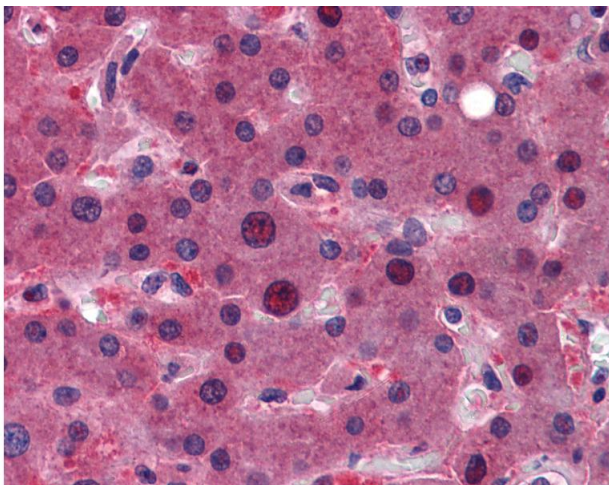
Short term (less than 1 week): 4°C. Avoid freeze-thaw cycles.

Images



Immunohistochemistry (Formalin-fixed Paraffin-embedded Sections)

Image 1. Human Liver: Formalin-Fixed, Paraffin-Embedded (FFPE)



Immunohistochemistry

Image 2. Anti-ZFAND6 antibody IHC of human liver. Immunohistochemistry of formalin-fixed, paraffin-embedded tissue after heat-induced antigen retrieval. Antibody concentration 5 ug/ml. This image was taken for the unconjugated form of this product. Other for ...