



[Go to Product page](#)

Datasheet for ABIN6747007
anti-KEAP1 antibody (AA 21-70)

2 Images

Overview

Quantity:	100 µL
Target:	KEAP1
Binding Specificity:	AA 21-70
Reactivity:	Human, Mouse, Rat, Pig, Cow, Dog, Horse, Zebrafish (Danio rerio), Monkey, Bat, Hamster
Host:	Rabbit
Clonality:	Polyclonal
Conjugate:	This KEAP1 antibody is un-conjugated
Application:	Western Blotting (WB), Immunohistochemistry (IHC), Immunohistochemistry (Paraffin-embedded Sections) (IHC (p))

Product Details

Brand:	IHC-plus™
Immunogen:	Synthetic peptide located between aa21-70 of human KEAP1 (Q14145, NP_987096). Percent identity by BLAST analysis: Human, Chimpanzee, Gorilla, Orangutan, Gibbon, Monkey, Galago, Marmoset, Mouse, Rat, Hamster, Elephant, Panda, Dog, Bovine, Bat, Horse, Pig, Opossum, Lizard (100%), Platypus (92%). Type of Immunogen: Synthetic peptide
Isotype:	IgG
Specificity:	Human KEAP1
Predicted Reactivity:	Percent identity by BLAST analysis: Human, Mouse, Rat, Dog, Bovine, Horse, Pig (100%).

Product Details

Purification: Immunoaffinity purified

Target Details

Target: KEAP1

Alternative Name: KEAP1 ([KEAP1 Products](#))

Background: Name/Gene ID: KEAP1

Synonyms: KEAP1, Cytosolic inhibitor of Nrf2, INrf2, KLHL19, Kelch-like protein 19, KIAA0132

Gene ID: 9817

NCBI Accession: [NP_987096](#)

UniProt: [Q14145](#)

Pathways: [Maintenance of Protein Location](#)

Application Details

Application Notes: Approved: IHC, IHC-P (5 µg/mL), WB (0.2 - 1 µg/mL)

Comment: Target Species of Antibody: Human

Restrictions: For Research Use only

Handling

Format: Lyophilized

Reconstitution: After adding water, will consist of PBS buffer with 2 % sucrose

Concentration: Lot specific

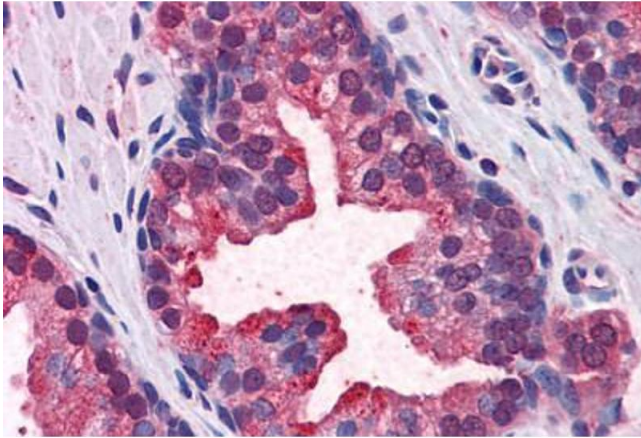
Buffer: Lyophilized from PBS with 2 % sucrose

Handling Advice: Avoid repeat freeze-thaw cycles.

Storage: 4 °C, -20 °C

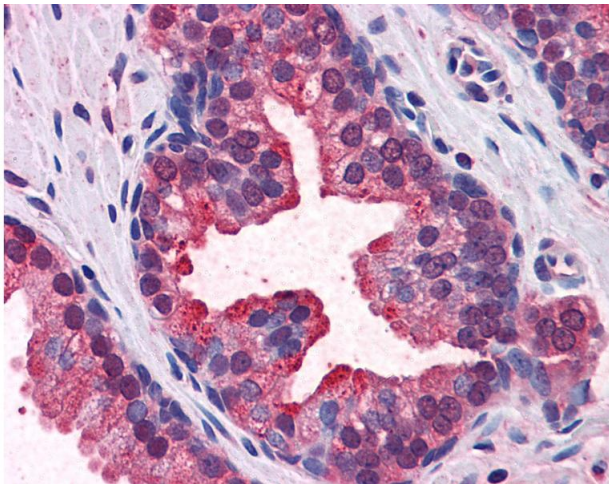
Storage Comment: Long term: -20°C, the use of 50% glycerol is recommended if storing aliquots in -20°C for long term use (up to 1 year)

Short term (less than 1 week): 4°C. Avoid freeze-thaw cycles.



Immunohistochemistry (Formalin-fixed Paraffin-embedded Sections)

Image 1. Human Prostate: Formalin-Fixed, Paraffin-Embedded (FFPE)



Immunohistochemistry

Image 2. Anti-KEAP1 antibody IHC of human prostate. Immunohistochemistry of formalin-fixed, paraffin-embedded tissue after heat-induced antigen retrieval. Antibody concentration 5 ug/ml. This image was taken for the unconjugated form of this product. Other f ...