

Datasheet for ABIN6747010
anti-Kv3.4 antibody (AA 252-301)[Go to Product page](#)

2 Images

Overview

| | |
|----------------------|--|
| Quantity: | 100 µL |
| Target: | Kv3.4 (KCNC4) |
| Binding Specificity: | AA 252-301 |
| Reactivity: | Human, Monkey, Horse, Pig |
| Host: | Rabbit |
| Clonality: | Polyclonal |
| Conjugate: | This Kv3.4 antibody is un-conjugated |
| Application: | Western Blotting (WB), Immunohistochemistry (IHC), Immunohistochemistry (Paraffin-embedded Sections) (IHC (p)) |

Product Details

| | |
|-----------------------|--|
| Brand: | IHC-plus™ |
| Immunogen: | Synthetic peptide located between aa252-301 of human KCNC4 (Q03721-2). Percent identity by BLAST analysis: Human, Chimpanzee, Gorilla, Gibbon, Monkey, Marmoset (100%), Galago, Mouse, Rat, Panda, Bovine, Opossum, Guinea pig (92%), Elephant, Bat, Horse, Pig (85%). Type of Immunogen: Synthetic peptide |
| Specificity: | Human KCNC4 / Kv3.4 |
| Predicted Reactivity: | Percent identity by BLAST analysis: Human (100%) Mouse, Rat, Guinea pig (92%) Bovine, Horse, Pig (85%). |
| Purification: | Immunoaffinity purified |

Target Details

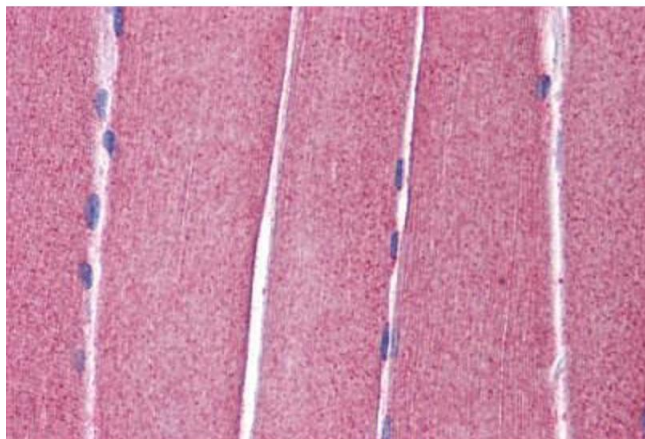
| | |
|-------------------|---|
| Target: | Kv3.4 (KCNC4) |
| Alternative Name: | KCNC4 / Kv3.4 (KCNC4 Products) |
| Background: | Name/Gene ID: KCNC4 Subfamily: Potassium channel - Kv3 Shaw Family: Ion Channel Synonyms: KCNC4, C1orf30, HKSHIIIC, K+ channel subunit, KSHIIIC, KV3.4 |
| Gene ID: | 3749 |
| UniProt: | Q03721 |

Application Details

| | |
|--------------------|--|
| Application Notes: | Approved: IHC, IHC-P (5 µg/mL), WB (0.2 - 1 µg/mL) Usage: Western Blot: Suggested dilution at 1 µg/mL in 5 % skim milk / PBS buffer, and HRP conjugated anti-Rabbit IgG should be diluted in 1: 50,000 - 100,000 as secondary antibody. |
| Comment: | Target Species of Antibody: Human |
| Restrictions: | For Research Use only |

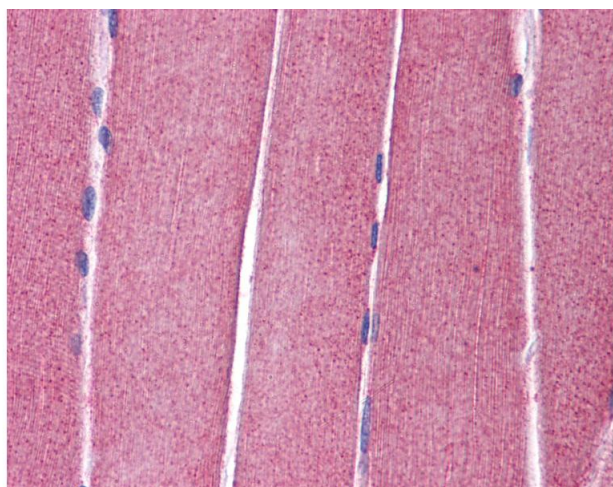
Handling

| | |
|------------------|---|
| Format: | Lyophilized |
| Reconstitution: | Distilled water |
| Concentration: | Lot specific |
| Buffer: | Lyophilized from PBS with 2 % sucrose |
| Handling Advice: | Avoid repeat freeze-thaw cycles. |
| Storage: | 4 °C, -20 °C |
| Storage Comment: | Long term: -20°C, the use of 50% glycerol is recommended if storing aliquots in -20°C for long term use (up to 1 year) Short term (less than 1 week): 4°C. Avoid freeze-thaw cycles. |



Immunohistochemistry (Formalin-fixed Paraffin-embedded Sections)

Image 1. Human Skeletal Muscle: Formalin-Fixed, Paraffin-Embedded (FFPE)



Immunohistochemistry

Image 2. Anti-KCNC4 / Kv3.4 antibody IHC of human skeletal muscle. Immunohistochemistry of formalin-fixed, paraffin-embedded tissue after heat-induced antigen retrieval. Antibody concentration 5 ug/ml. This image was taken for the unconjugated form of this p ...