

Datasheet for ABIN6747019  
**anti-GJB1 antibody (C-Term)**

## 2 Images

[Go to Product page](#)

## Overview

Quantity:	100 µL
Target:	GJB1
Binding Specificity:	C-Term
Reactivity:	Human, Rat, Mouse, Dog, Cow, Horse, Rabbit, Monkey, Pig, Bat, Hamster
Host:	Rabbit
Clonality:	Polyclonal
Conjugate:	This GJB1 antibody is un-conjugated
Application:	Western Blotting (WB), Immunohistochemistry (IHC), Immunohistochemistry (Paraffin-embedded Sections) (IHC (p))

## Product Details

Brand:	IHC-plus™
Immunogen:	Synthetic peptide from C-Terminus of human GJB1 (P08034, NP_000157). Percent identity by BLAST analysis: Human, Chimpanzee, Gorilla, Gibbon, Monkey, Galago, Marmoset, Mouse, Rat, Hamster, Elephant, Panda, Dog, Bovine, Bat, Rabbit, Horse, Pig (100%), Guinea pig (92%), Platypus (86%), Opossum (85%).  Type of Immunogen: Synthetic peptide
Specificity:	Human GJB1 / Connexin 32
Predicted Reactivity:	Percent identity by BLAST analysis: Mouse, Dog (100%) Guinea pig (92%).
Purification:	Immunoaffinity purified

## Target Details

Target:	GJB1
Alternative Name:	GJB1 / CX32 / Connexin 32 ( <a href="#">GJB1 Products</a> )
Background:	Name/Gene ID: GJB1 Subfamily: Connexin Family: Ion Channel  Synonyms: GJB1, Connexin 32, CMTX1, Connexin-32, CX32, Gap junction beta-1 protein, Gap junction protein beta-1, CMTX
Gene ID:	2705
NCBI Accession:	<a href="#">NP_000157</a>
UniProt:	<a href="#">P08034</a>
Pathways:	<a href="#">Cell-Cell Junction Organization</a>

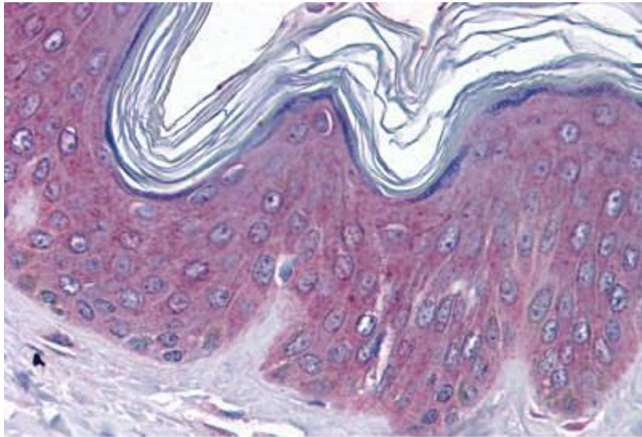
## Application Details

Application Notes:	Approved: IHC, IHC-P (5 µg/mL), WB (0.2 - 1 µg/mL)  Usage: Western Blot: Suggested dilution at 1 µg/mL in 5 % skim milk / PBS buffer, and HRP conjugated anti-Rabbit IgG should be diluted in 1: 50,000 - 100,000 as secondary antibody.
Comment:	Target Species of Antibody: Human
Restrictions:	For Research Use only

## Handling

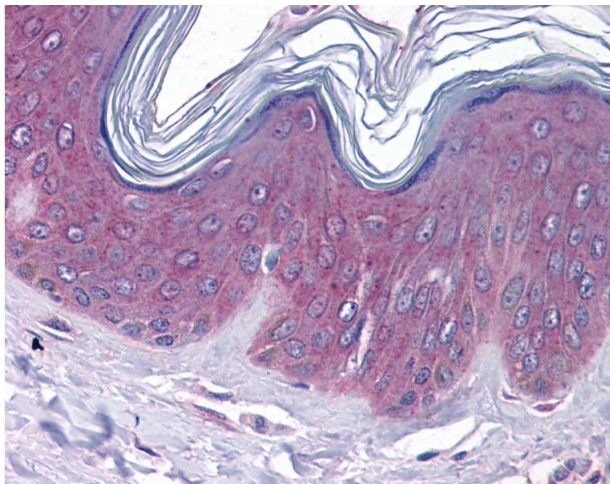
Format:	Lyophilized
Reconstitution:	Distilled water
Concentration:	Lot specific
Buffer:	Lyophilized from PBS with 2 % sucrose
Handling Advice:	Avoid repeat freeze-thaw cycles.
Storage:	4 °C, -20 °C
Storage Comment:	Long term: -20°C, the use of 50% glycerol is recommended if storing aliquots in -20°C for long term use (up to 1 year)

Short term (less than 1 week): 4°C. Avoid freeze-thaw cycles.



### Immunohistochemistry (Formalin-fixed Paraffin-embedded Sections)

**Image 1.** Human Skin: Formalin-Fixed, Paraffin-Embedded (FFPE)



### Immunohistochemistry

**Image 2.** Anti-GJB1 / Connexin 32 antibody IHC of human skin. Immunohistochemistry of formalin-fixed, paraffin-embedded tissue after heat-induced antigen retrieval. Antibody concentration 5 ug/ml. This image was taken for the unconjugated form of this product ...