



[Go to Product page](#)

Datasheet for ABIN6747023

anti-NK2 Homeobox 3 antibody (AA 281-330)

2 Images

Overview

Quantity:	100 µL
Target:	NK2 Homeobox 3 (NKX2-3)
Binding Specificity:	AA 281-330
Reactivity:	Mouse, Rat, Cow, Guinea Pig, Dog
Host:	Rabbit
Clonality:	Polyclonal
Conjugate:	This NK2 Homeobox 3 antibody is un-conjugated
Application:	Western Blotting (WB), Immunohistochemistry (IHC), Immunohistochemistry (Paraffin-embedded Sections) (IHC (p))

Product Details

Brand:	IHC-plus™
Immunogen:	Synthetic peptide located between aa281-330 of mouse Nkx2-3 (P97334, NP_032725). Percent identity by BLAST analysis: Mouse (100%), Human, Gibbon, Guinea pig (86%), Opossum (80%). Type of Immunogen: Synthetic peptide
Specificity:	Mouse NKX2-3
Predicted Reactivity:	Percent identity by BLAST analysis: Rat (93%) Dog, Bovine, Guinea pig (86%).
Purification:	Immunoaffinity purified

Target Details

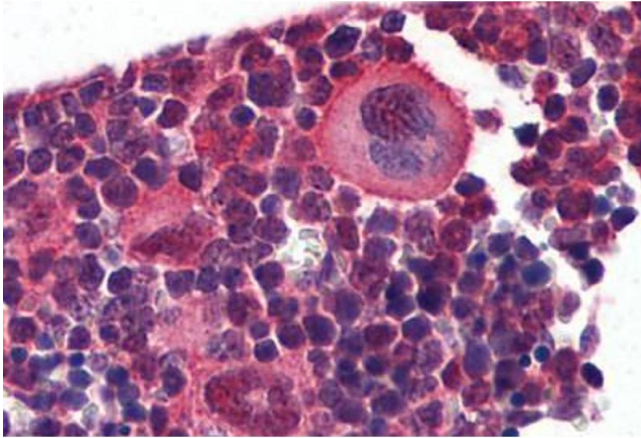
Target:	NK2 Homeobox 3 (NKX2-3)
Alternative Name:	NKX2-3 (NKX2-3 Products)
Background:	Name/Gene ID: NKX2-3 Synonyms: NKX2-3, CSX3, NK-2 (Drosophila) homolog C, NK2 homeobox 3, NK2.3, NKX2.3, NKX23, NKX4-3, Homeobox protein Nkx-2.3, NKX2C
Gene ID:	159296
NCBI Accession:	NP_032725
UniProt:	Q8TAU0

Application Details

Application Notes:	Approved: IHC, IHC-P (5 µg/mL), WB (0.2 - 1 µg/mL) Usage: Western Blot: Suggested dilution at 0.25 µg/mL in 5 % skim milk / PBS buffer, and HRP conjugated anti-Rabbit IgG should be diluted in 1: 50,000 - 100,000 as secondary antibody.
Comment:	Target Species of Antibody: Mouse
Restrictions:	For Research Use only

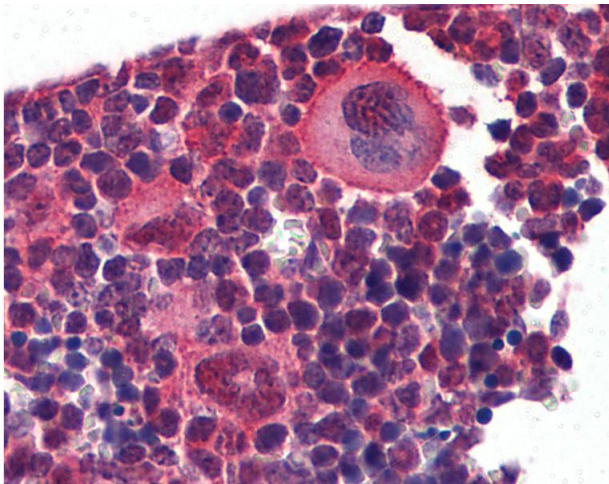
Handling

Format:	Lyophilized
Reconstitution:	Distilled water
Concentration:	Lot specific
Buffer:	Lyophilized from PBS with 2 % sucrose
Handling Advice:	Avoid repeat freeze-thaw cycles.
Storage:	4 °C, -20 °C
Storage Comment:	Long term: -20°C, the use of 50% glycerol is recommended if storing aliquots in -20°C for long term use (up to 1 year) Short term (less than 1 week): 4°C. Avoid freeze-thaw cycles.



Immunohistochemistry (Formalin-fixed Paraffin-embedded Sections)

Image 1. Mouse Lymphoid Tissue: Formalin-Fixed, Paraffin-Embedded (FFPE)



Immunohistochemistry

Image 2. Anti-NKX2-3 antibody IHC of mouse lymphoid tissue. Immunohistochemistry of formalin-fixed, paraffin-embedded tissue after heat-induced antigen retrieval. Antibody concentration 5 ug/ml. This image was taken for the unconjugated form of this product. ...