



[Go to Product page](#)

Datasheet for ABIN6747038
anti-ZNF395 antibody (C-Term)

2 Images

Overview

Quantity:	100 µL
Target:	ZNF395
Binding Specificity:	C-Term
Reactivity:	Human, Cow, Guinea Pig, Rabbit, Monkey
Host:	Rabbit
Clonality:	Polyclonal
Application:	Western Blotting (WB), Immunohistochemistry (IHC), Immunohistochemistry (Paraffin-embedded Sections) (IHC (p))

Product Details

Brand:	IHC-plus™
Immunogen:	Synthetic peptide from C-Terminus of human ZNF395 (Q9H8N7, NP_061130). Percent identity by BLAST analysis: Human, Chimpanzee, Gorilla, Gibbon, Monkey, Marmoset (100%), Panda, Dog, Horse, Pig (92%), Galago, Mouse, Rat, Bovine, Bat, Rabbit, Guinea pig (85%). Type of Immunogen: Synthetic peptide
Specificity:	Human ZNF395
Predicted Reactivity:	Percent identity by BLAST analysis: Dog, Horse, Pig (92%) Bovine, Rabbit, Guinea pig (85%).
Purification:	Immunoaffinity purified

Target Details

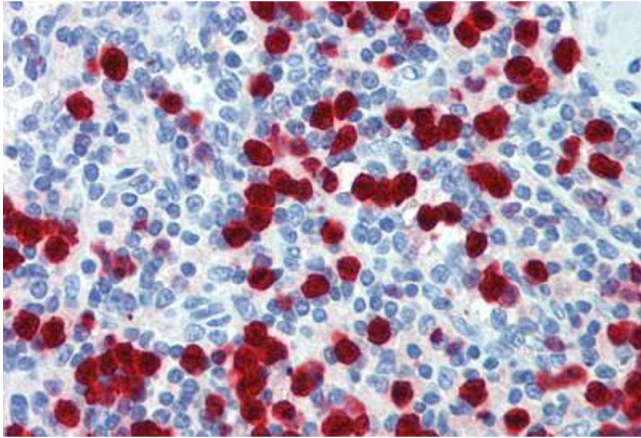
Target:	ZNF395
Alternative Name:	ZNF395 (ZNF395 Products)
Background:	Name/Gene ID: ZNF395 Family: Zinc Finger Synonyms: ZNF395, HDRF-2, HD-regulating factor 2, HDBP-2, HDBP2, Papillomavirus-binding factor, PBF, PRF-1, Zinc finger protein 395, Si-1-8-14
Gene ID:	55893
NCBI Accession:	NP_061130
UniProt:	Q9H8N7

Application Details

Application Notes:	Approved: IHC, IHC-P (5 µg/mL), WB (0.2 - 1 µg/mL) Usage: Western Blot: Suggested dilution at 1 µg/mL in 5 % skim milk / PBS buffer, and HRP conjugated anti-Rabbit IgG should be diluted in 1: 50,000 - 100,000 as secondary antibody.
Comment:	Target Species of Antibody: Human
Restrictions:	For Research Use only

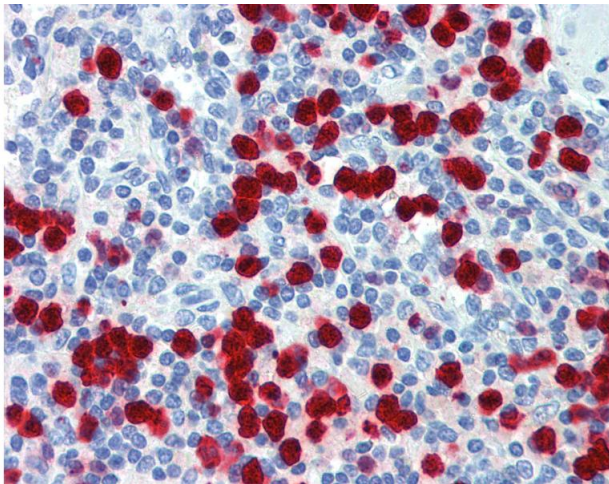
Handling

Format:	Lyophilized
Reconstitution:	Distilled water
Concentration:	Lot specific
Buffer:	Lyophilized from PBS with 2 % sucrose
Handling Advice:	Avoid repeat freeze-thaw cycles.
Storage:	4 °C, -20 °C
Storage Comment:	Long term: -20°C, the use of 50% glycerol is recommended if storing aliquots in -20°C for long term use (up to 1 year) Short term (less than 1 week): 4°C. Avoid freeze-thaw cycles.



Immunohistochemistry (Formalin-fixed Paraffin-embedded Sections)

Image 1. Human Spleen: Formalin-Fixed, Paraffin-Embedded (FFPE)



Immunohistochemistry

Image 2. Anti-ZNF395 antibody IHC of human spleen. Immunohistochemistry of formalin-fixed, paraffin-embedded tissue after heat-induced antigen retrieval. Antibody concentration 5 ug/ml. This image was taken for the unconjugated form of this product. Other fo ...