



Datasheet for ABIN6747041  
**anti-HDX antibody (N-Term)**



[Go to Product page](#)

2 Images

Overview

Quantity:	100 µL
Target:	HDX
Binding Specificity:	N-Term
Reactivity:	Human, Dog, Guinea Pig, Horse, Rabbit, Rat, Mouse, Chicken, Monkey
Host:	Rabbit
Clonality:	Polyclonal
Conjugate:	This HDX antibody is un-conjugated
Application:	Western Blotting (WB), Immunohistochemistry (Paraffin-embedded Sections) (IHC (p)), Immunohistochemistry (IHC)

Product Details

Brand:	IHC-plus™
Immunogen:	Synthetic peptide from N-Terminus of human HDX (Q7Z353, NP_653258). Percent identity by BLAST analysis: Human, Chimpanzee, Gorilla, Gibbon, Monkey, Galago, Marmoset, Mouse, Rat, Elephant, Dog, Rabbit, Horse, Opossum, Guinea pig, Turkey, Zebra finch, Chicken (100%), Xenopus (92%), Stickleback (84%).  Type of Immunogen: Synthetic peptide
Specificity:	Human HDX
Predicted Reactivity:	Percent identity by BLAST analysis: Human, Mouse, Dog, Rabbit, Horse, Chicken (100%).
Purification:	Immunoaffinity purified

## Target Details

---

Target: HDX

Alternative Name: HDX ([HDX Products](#))

Background: Name/Gene ID: HDX

Synonyms: HDX, CXorf43, Highly divergent homeobox, GPHPX, PHP

Gene ID: 139324

NCBI Accession: [NP\\_653258](#)

UniProt: [Q7Z353](#)

## Application Details

---

Application Notes: Approved: IHC, IHC-P (5 µg/mL), WB (0.2 - 1 µg/mL)

Usage: Western Blot: Suggested dilution at 1 µg/mL in 5 % skim milk / PBS buffer, and HRP conjugated anti-Rabbit IgG should be diluted in 1: 50,000 - 100,000 as secondary antibody.

Comment: Target Species of Antibody: Human

Restrictions: For Research Use only

## Handling

---

Format: Lyophilized

Reconstitution: Distilled water

Concentration: Lot specific

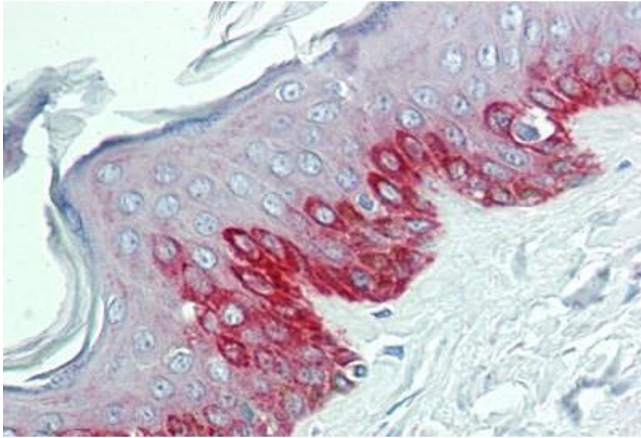
Buffer: Lyophilized from PBS with 2 % sucrose

Handling Advice: Avoid repeat freeze-thaw cycles.

Storage: 4 °C, -20 °C

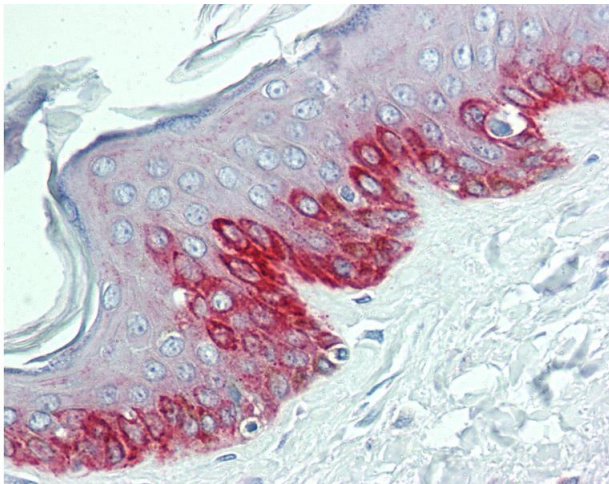
Storage Comment: Long term: -20°C, the use of 50% glycerol is recommended if storing aliquots in -20°C for long term use (up to 1 year)

Short term (less than 1 week): 4°C. Avoid freeze-thaw cycles.



### Immunohistochemistry (Formalin-fixed Paraffin-embedded Sections)

**Image 1.** Human Skin: Formalin-Fixed, Paraffin-Embedded (FFPE)



### Immunohistochemistry

**Image 2.** Anti-HDX antibody IHC of human skin. Immunohistochemistry of formalin-fixed, paraffin-embedded tissue after heat-induced antigen retrieval. Antibody concentration 5 ug/ml. This image was taken for the unconjugated form of this product. Other forms h ...