



[Go to Product page](#)

Datasheet for ABIN6747045
anti-SMN1 antibody (AA 45-94)

2 Images

Overview

Quantity:	100 µL
Target:	SMN1
Binding Specificity:	AA 45-94
Reactivity:	Human, Mouse, Monkey, Dog
Host:	Rabbit
Clonality:	Polyclonal
Conjugate:	This SMN1 antibody is un-conjugated
Application:	Western Blotting (WB), Immunohistochemistry (IHC), Immunohistochemistry (Paraffin-embedded Sections) (IHC (p))

Product Details

Brand:	IHC-plus™
Immunogen:	Synthetic peptide located between aa45-94 of human SMN1 (Q16637, NP_075012). Percent identity by BLAST analysis: Human, Chimpanzee, Gorilla, Orangutan, Gibbon, Monkey, Marmoset, Mouse, Dog, Cat (100%), Rat, Horse, Pig (92%), Guinea pig (84%). Type of Immunogen: Synthetic peptide
Isotype:	IgG
Specificity:	Human SMN1
Predicted Reactivity:	Percent identity by BLAST analysis: Human, Mouse (100%) Rat, Pig (92%).
Purification:	Immunoaffinity purified

Target Details

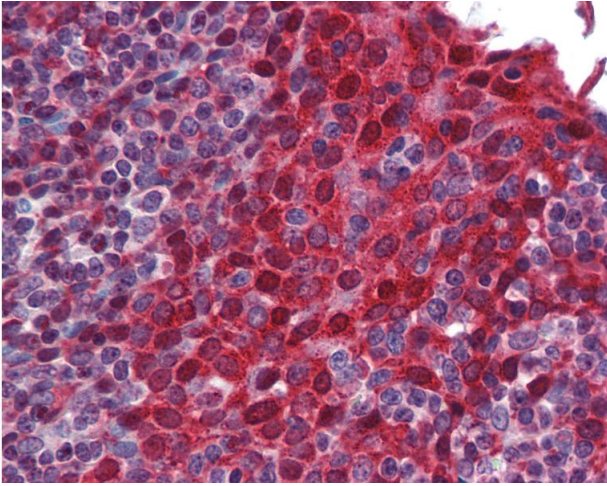
Target:	SMN1
Alternative Name:	SMN / SMA (SMN1 Products)
Background:	Name/Gene ID: SMN1 Synonyms: SMN1, BCD541, Component of gems 1, Gemin-1, SMA2, SMA4, SMA@, SMA1, SMNC, SMNT, T-BCD541, SMN, Survival motor neuron protein, Gemin 1, GEMIN1, SMA, SMA3
Gene ID:	6606
NCBI Accession:	NP_075012
Pathways:	Ribonucleoprotein Complex Subunit Organization

Application Details

Application Notes:	Approved: IHC, IHC-P (5 µg/mL), WB Usage: ELISA titer using peptide based assay: 1:62500. Western Blot: Suggested dilution at 0.5 µg/mL in 5 % skim milk / PBS buffer, and HRP conjugated anti-Rabbit IgG should be diluted in 1:50000 - 100000 as second antibody.
Comment:	Target Species of Antibody: Human
Restrictions:	For Research Use only

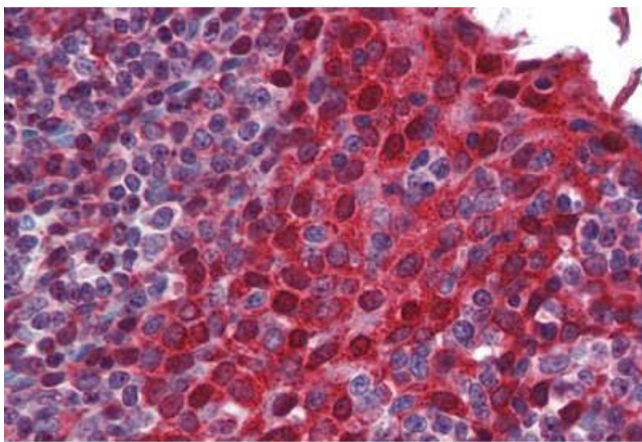
Handling

Format:	Lyophilized
Reconstitution:	Distilled Water.
Concentration:	Lot specific
Buffer:	Lyophilized from PBS with 2 % sucrose
Handling Advice:	Avoid repeat freeze-thaw cycles.
Storage:	4 °C,-20 °C
Storage Comment:	Long term: -20°C, the use of 50% glycerol is recommended if storing aliquots in -20°C for long term use (up to 1 year) Short term (less than 1 week): 4°C. Avoid freeze-thaw cycles.



Immunohistochemistry

Image 1. Anti-SMN1 antibody IHC of human tonsil. Immunohistochemistry of formalin-fixed, paraffin-embedded tissue after heat-induced antigen retrieval. Antibody concentration 5 ug/ml. This image was taken for the unconjugated form of this product. Other form ...



Immunohistochemistry (Formalin-fixed Paraffin-embedded Sections)

Image 2. Human Tonsil: Formalin-Fixed, Paraffin-Embedded (FFPE)