

Datasheet for ABIN6747050
anti-PABPN1 antibody (N-Term)

2 Images

[Go to Product page](#)

Overview

Quantity:	100 µL
Target:	PABPN1
Binding Specificity:	N-Term
Reactivity:	Human, Dog, Rat, Rabbit, Cow, Guinea Pig, Pig, Monkey
Host:	Rabbit
Clonality:	Polyclonal
Conjugate:	This PABPN1 antibody is un-conjugated
Application:	Western Blotting (WB), Immunohistochemistry (IHC), Immunohistochemistry (Paraffin-embedded Sections) (IHC (p))

Product Details

Brand:	IHC-plus™
Immunogen:	Synthetic peptide from N-Terminus of human PABPN1 (Q86U42, NP_004634). Percent identity by BLAST analysis: Human, Chimpanzee, Gorilla, Galago, Marmoset, Rat, Dog, Bovine, Rabbit, Pig, Guinea pig (100%), Mouse, Opossum (92%). Type of Immunogen: Synthetic peptide
Specificity:	Human PABPN1
Predicted Reactivity:	Percent identity by BLAST analysis: Dog, Bovine, Rabbit, Pig (100%) Mouse, Rat (92%).
Purification:	Immunoaffinity purified

Target Details

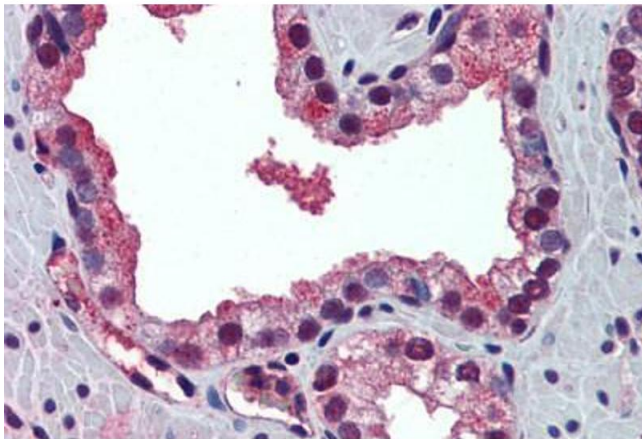
Target:	PABPN1
Alternative Name:	PABPN1 / PABP2 (PABPN1 Products)
Background:	Name/Gene ID: PABPN1 Synonyms: PABPN1, PABP2, Poly(A)-binding protein 2, OPMD, PABII, PABP-2, Poly(A) binding protein 2, Poly(A) binding protein II, Poly(A)-binding protein II, PAB2
Gene ID:	8106
NCBI Accession:	NP_004634
UniProt:	Q86U42

Application Details

Application Notes:	Approved: IHC, IHC-P (5 µg/mL), WB (0.2 - 1 µg/mL) Usage: Western Blot: Suggested dilution at 1 µg/mL in 5 % skim milk / PBS buffer, and HRP conjugated anti-Rabbit IgG should be diluted in 1: 50,000 - 100,000 as secondary antibody.
Comment:	Target Species of Antibody: Human
Restrictions:	For Research Use only

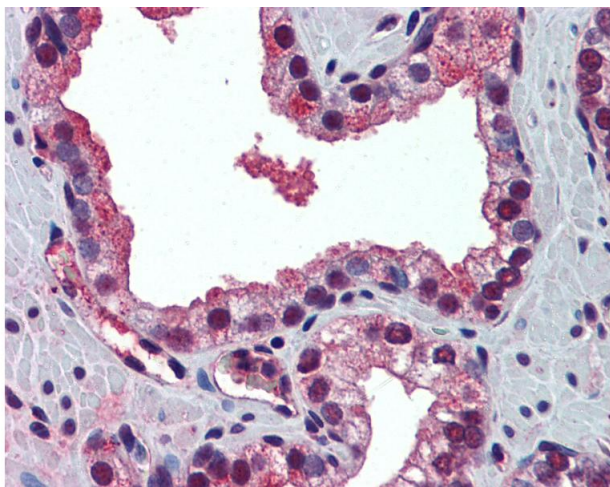
Handling

Format:	Lyophilized
Reconstitution:	Distilled water
Concentration:	Lot specific
Buffer:	Lyophilized from PBS with 2 % sucrose
Handling Advice:	Avoid repeat freeze-thaw cycles.
Storage:	4 °C, -20 °C
Storage Comment:	Long term: -20°C, the use of 50% glycerol is recommended if storing aliquots in -20°C for long term use (up to 1 year) Short term (less than 1 week): 4°C. Avoid freeze-thaw cycles.



Immunohistochemistry (Formalin-fixed Paraffin-embedded Sections)

Image 1. Human Prostate: Formalin-Fixed, Paraffin-Embedded (FFPE)



Immunohistochemistry

Image 2. Anti-PABPN1 antibody IHC of human prostate. Immunohistochemistry of formalin-fixed, paraffin-embedded tissue after heat-induced antigen retrieval. Antibody concentration 5 ug/ml. This image was taken for the unconjugated form of this product. Other ...