

Datasheet for ABIN6747051
anti-SRSF11 antibody (AA 398-447)[Go to Product page](#)

2 Images

Overview

Quantity:	100 µL
Target:	SRSF11
Binding Specificity:	AA 398-447
Reactivity:	Human, Rat, Horse, Chicken, Monkey
Host:	Rabbit
Clonality:	Polyclonal
Conjugate:	This SRSF11 antibody is un-conjugated
Application:	Western Blotting (WB), Immunohistochemistry (IHC), Immunohistochemistry (Paraffin-embedded Sections) (IHC (p))

Product Details

Brand:	IHC-plus™
Immunogen:	Synthetic peptide located between aa398-447 of human SRSF11 (Q05519, NP_004759). Percent identity by BLAST analysis: Human, Chimpanzee, Gorilla, Gibbon, Galago, Marmoset, Rat, Elephant, Horse, Turkey, Chicken, Platypus (100%), Mouse, Dog, Bovine, Bat, Pig (92%). Type of Immunogen: Synthetic peptide
Isotype:	IgG
Specificity:	Human SRSF11 / SFRS11
Predicted Reactivity:	Percent identity by BLAST analysis: Human, Chicken (100%) Mouse, Rat, Bovine, Pig (92%).
Purification:	Immunoaffinity purified

Target Details

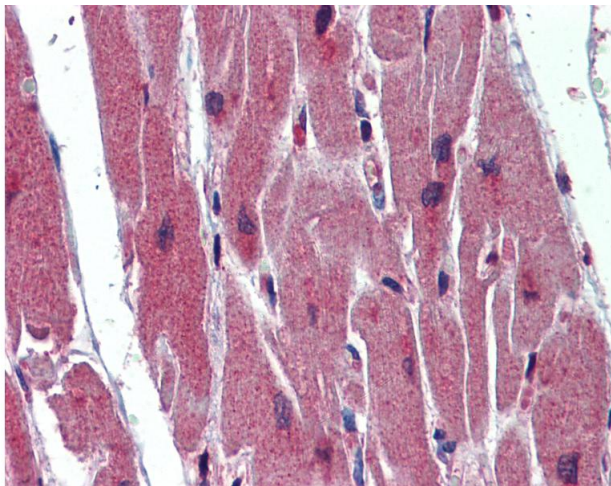
Target:	SRSF11
Alternative Name:	SRSF11 / SFRS11 (SRSF11 Products)
Background:	Name/Gene ID: SRSF11 Synonyms: SRSF11, DJ677H15.2, NET2, p54, SFRS11, Splicing factor p54, SR splicing factor 11
Gene ID:	9295
NCBI Accession:	NP_004759
UniProt:	Q05519

Application Details

Application Notes:	Approved: IHC, IHC-P (5 µg/mL), WB Usage: ELISA titer using peptide based assay: 1:62500. Western Blot: Suggested dilution at 1 µg/mL in 5 % skim milk / PBS buffer, and HRP conjugated anti-Rabbit IgG should be diluted in 1:50000 - 100000 as second antibody.
Comment:	Target Species of Antibody: Human
Restrictions:	For Research Use only

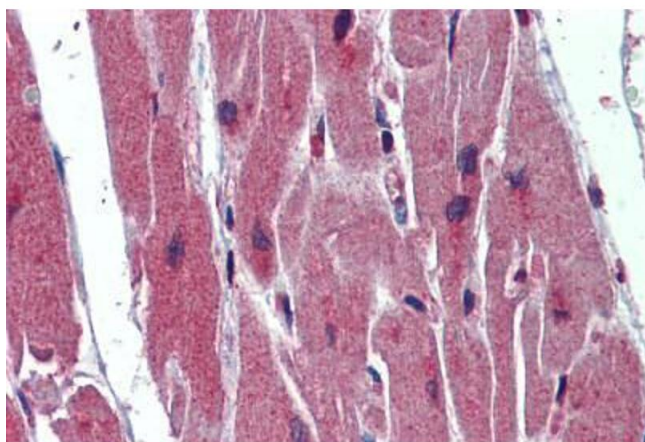
Handling

Format:	Lyophilized
Reconstitution:	Distilled Water.
Concentration:	Lot specific
Buffer:	Lyophilized from PBS with 2 % sucrose
Handling Advice:	Avoid repeat freeze-thaw cycles.
Storage:	4 °C, -20 °C
Storage Comment:	Long term: -20°C, the use of 50% glycerol is recommended if storing aliquots in -20°C for long term use (up to 1 year) Short term (less than 1 week): 4°C. Avoid freeze-thaw cycles.



Immunohistochemistry

Image 1. Anti-SRSF11 / SFRS11 antibody IHC of human heart. Immunohistochemistry of formalin-fixed, paraffin-embedded tissue after heat-induced antigen retrieval. Antibody concentration 5 ug/ml. This image was taken for the unconjugated form of this product. ...



Immunohistochemistry (Formalin-fixed Paraffin-embedded Sections)

Image 2. Human Heart: Formalin-Fixed, Paraffin-Embedded (FFPE)