

Datasheet for ABIN6747056
anti-KHDRBS1 antibody (AA 359-408)

2 Images

[Go to Product page](#)

Overview

Quantity:	100 µL
Target:	KHDRBS1
Binding Specificity:	AA 359-408
Reactivity:	Human, Rabbit, Cow, Guinea Pig, Dog, Pig, Monkey, Bat
Host:	Rabbit
Clonality:	Polyclonal
Conjugate:	This KHDRBS1 antibody is un-conjugated
Application:	Western Blotting (WB), Immunohistochemistry (IHC), Immunohistochemistry (Paraffin-embedded Sections) (IHC (p))

Product Details

Brand:	IHC-plus™
Immunogen:	<p>Synthetic peptide located between aa359-408 of human KHDRBS1 (Q07666, NP_006550). Percent identity by BLAST analysis: Human, Chimpanzee, Gorilla, Gibbon, Monkey, Galago, Marmoset, Elephant, Panda, Dog, Bovine, Bat, Rabbit, Pig, Guinea pig (100%), Mouse, Rat, Hamster, Opossum, Turkey, Chicken, Xenopus (92%).</p> <p>Type of Immunogen: Synthetic peptide</p>
Specificity:	Human KHDRBS1 / SAM68
Predicted Reactivity:	Percent identity by BLAST analysis: Human, Dog, Bovine, Rabbit (100%) Chicken (92%).
Purification:	Immunoaffinity purified

Target Details

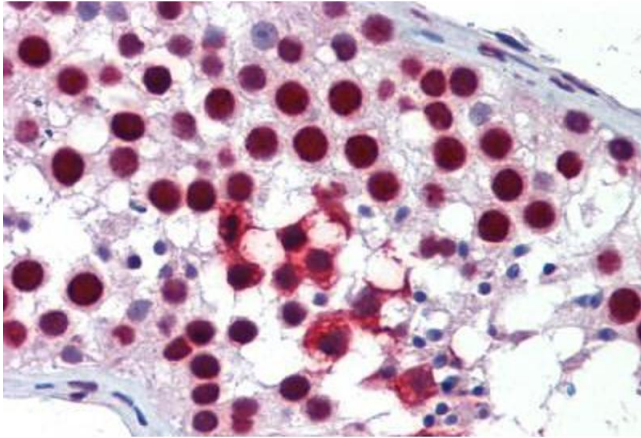
Target:	KHDRBS1
Alternative Name:	KHDRBS1 / SAM68 / p62 (KHDRBS1 Products)
Background:	Name/Gene ID: KHDRBS1 Synonyms: KHDRBS1, p62, Sam68, p68
Gene ID:	10657
NCBI Accession:	NP_006550
UniProt:	Q07666
Pathways:	NF-kappaB Signaling , Neurotrophin Signaling Pathway , Autophagy

Application Details

Application Notes:	Approved: IHC, IHC-P (5 µg/mL), WB (0.2 - 1 µg/mL) Usage: Western Blot: Suggested dilution at 1 µg/mL in 5 % skim milk / PBS buffer, and HRP conjugated anti-Rabbit IgG should be diluted in 1: 50,000 - 100,000 as secondary antibody.
Comment:	Target Species of Antibody: Human
Restrictions:	For Research Use only

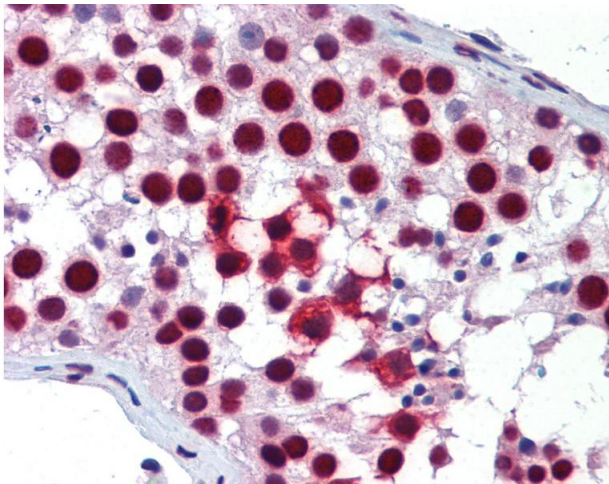
Handling

Format:	Lyophilized
Reconstitution:	Distilled water
Concentration:	Lot specific
Buffer:	Lyophilized from PBS with 2 % sucrose
Handling Advice:	Avoid repeat freeze-thaw cycles.
Storage:	4 °C, -20 °C
Storage Comment:	Long term: -20°C, the use of 50% glycerol is recommended if storing aliquots in -20°C for long term use (up to 1 year) Short term (less than 1 week): 4°C. Avoid freeze-thaw cycles.



Immunohistochemistry (Formalin-fixed Paraffin-embedded Sections)

Image 1. Human Testis: Formalin-Fixed, Paraffin-Embedded (FFPE)



Immunohistochemistry

Image 2. Anti-SAM68 antibody IHC of human testis. Immunohistochemistry of formalin-fixed, paraffin-embedded tissue after heat-induced antigen retrieval. Antibody concentration 5 ug/ml. This image was taken for the unconjugated form of this product. Other for ...