



[Go to Product page](#)

Datasheet for ABIN6747057
anti-LSM1 antibody (C-Term)

2 Images

Overview

Quantity:	100 µL
Target:	LSM1
Binding Specificity:	C-Term
Reactivity:	Human, Mouse, Rat, Dog, Guinea Pig, Rabbit, Zebrafish (Danio rerio), Bat, Hamster
Host:	Rabbit
Clonality:	Polyclonal
Conjugate:	This LSM1 antibody is un-conjugated
Application:	Western Blotting (WB), Immunohistochemistry (IHC), Immunohistochemistry (Paraffin-embedded Sections) (IHC (p))

Product Details

Brand:	IHC-plus™
Immunogen:	Synthetic peptide from C-Terminus of human LSM1 (O15116, NP_055277). Percent identity by BLAST analysis: Human, Chimpanzee, Gorilla, Gibbon, Monkey, Galago, Mouse, Rat, Hamster, Elephant, Panda, Dog, Bat, Rabbit, Guinea pig (100%), Marmoset, Bovine, Horse, Opossum, Platypus, Xenopus (92%), Zebra finch, Frog, Salmon, Stickleback, Pufferfish (85%). Type of Immunogen: Synthetic peptide
Specificity:	Human LSM1
Predicted Reactivity:	Percent identity by BLAST analysis: Human, Mouse, Rat, Dog (100%) Bovine, Xenopus (92%).
Purification:	Immunoaffinity purified

Target Details

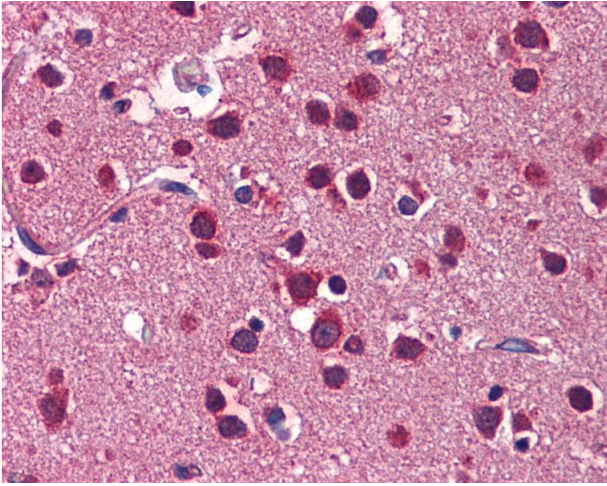
Target:	LSM1
Alternative Name:	LSM1 (LSM1 Products)
Background:	Name/Gene ID: LSM1 Synonyms: LSM1, Cancer-associated Sm-like, Small nuclear ribonuclear CaSm, CASM, YJL124C
Gene ID:	27257
NCBI Accession:	NP_055277

Application Details

Application Notes:	Approved: IHC, IHC-P (5 µg/mL), WB (0.2 - 1 µg/mL) Usage: Western Blot: Suggested dilution at 1 µg/mL in 5 % skim milk / PBS buffer, and HRP conjugated anti-Rabbit IgG should be diluted in 1: 50,000 - 100,000 as secondary antibody.
Comment:	Target Species of Antibody: Human
Restrictions:	For Research Use only

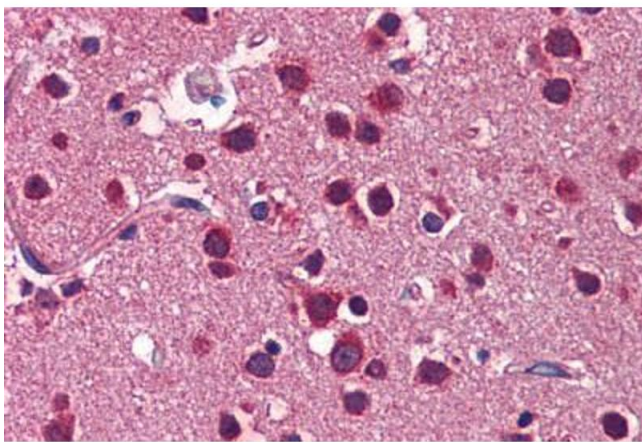
Handling

Format:	Lyophilized
Reconstitution:	Distilled water
Concentration:	Lot specific
Buffer:	Lyophilized from PBS with 2 % sucrose
Handling Advice:	Avoid repeat freeze-thaw cycles.
Storage:	4 °C, -20 °C
Storage Comment:	Long term: -20°C, the use of 50% glycerol is recommended if storing aliquots in -20°C for long term use (up to 1 year) Short term (less than 1 week): 4°C. Avoid freeze-thaw cycles.



Immunohistochemistry

Image 1. Anti-LSM1 antibody IHC of human brain, cortex. Immunohistochemistry of formalin-fixed, paraffin-embedded tissue after heat-induced antigen retrieval. Antibody concentration 5 ug/ml. This image was taken for the unconjugated form of this product. Oth ...



Immunohistochemistry (Formalin-fixed Paraffin-embedded Sections)

Image 2. Human Brain, Cortex: Formalin-Fixed, Paraffin-Embedded (FFPE)