



[Go to Product page](#)

Datasheet for ABIN6747060  
**anti-RBM47 antibody (AA 287-336)**

2 Images

Overview

Quantity:	100 µL
Target:	RBM47
Binding Specificity:	AA 287-336
Reactivity:	Human, Rat, Mouse, Dog, Cow, Guinea Pig, Horse, Rabbit, Bat, Monkey, Pig
Host:	Rabbit
Clonality:	Polyclonal
Conjugate:	This RBM47 antibody is un-conjugated
Application:	Western Blotting (WB), Immunohistochemistry (IHC), Immunohistochemistry (Paraffin-embedded Sections) (IHC (p))

Product Details

Brand:	IHC-plus™
Immunogen:	Synthetic peptide located between aa287-336 of human RBM47 (A0AV96-2, NP_061900). Percent identity by BLAST analysis: Human, Chimpanzee, Gorilla, Orangutan, Gibbon, Monkey, Galago, Marmoset, Mouse, Rat, Elephant, Dog, Bovine, Bat, Rabbit, Horse, Pig, Guinea pig (100%), Opossum, Turkey, Zebra finch, Chicken, Platypus, Xenopus (92%), Lizard (91%), Stickleback (85%).  Type of Immunogen: Synthetic peptide
Specificity:	Human RBM47
Predicted Reactivity:	Percent identity by BLAST analysis: Human, Mouse, Rat, Dog, Bovine, Rabbit, Horse, Guinea pig

## Product Details

---

(100%) Chicken (92%).

Purification: Immunoaffinity purified

## Target Details

---

Target: RBM47

Alternative Name: RBM47 ([RBM47 Products](#))

Background: Name/Gene ID: RBM47

Synonyms: RBM47, NET18, RNA binding motif protein 47, RNA-binding motif protein 47, RNA-binding protein 47

Gene ID: 54502

NCBI Accession: [NP\\_061900](#)

UniProt: [A0AV96](#)

## Application Details

---

Application Notes: Approved: IHC, IHC-P (5 µg/mL), WB (0.2 - 1 µg/mL)

Usage: Western Blot: Suggested dilution at 1 µg/mL in 5 % skim milk / PBS buffer, and HRP conjugated anti-Rabbit IgG should be diluted in 1: 50,000 - 100,000 as secondary antibody.

Comment: Target Species of Antibody: Human

Restrictions: For Research Use only

## Handling

---

Format: Lyophilized

Reconstitution: Distilled water

Concentration: Lot specific

Buffer: Lyophilized from PBS with 2 % sucrose

Handling Advice: Avoid repeat freeze-thaw cycles.

Storage: 4 °C, -20 °C

Storage Comment: Long term: -20°C, the use of 50% glycerol is recommended if storing aliquots in -20°C for long

## Handling

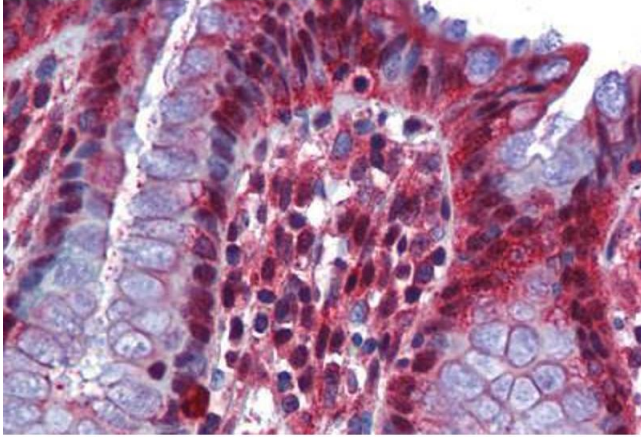
---

term use (up to 1 year)

Short term (less than 1 week): 4°C. Avoid freeze-thaw cycles.

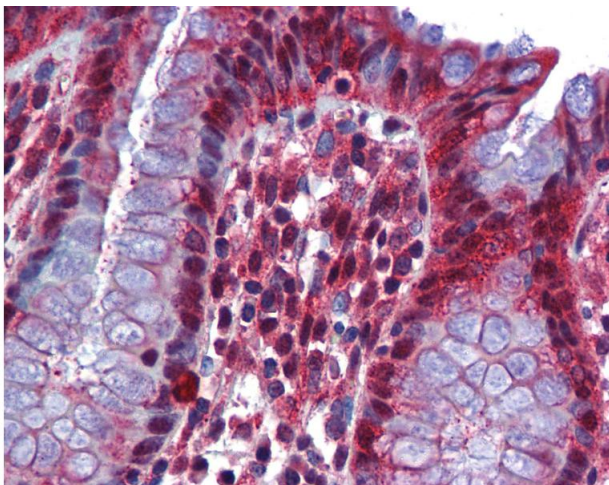
## Images

---



### Immunohistochemistry (Formalin-fixed Paraffin-embedded Sections)

**Image 1.** Human Colon: Formalin-Fixed, Paraffin-Embedded (FFPE)



### Immunohistochemistry

**Image 2.** Anti-RBM47 antibody IHC of human colon. Immunohistochemistry of formalin-fixed, paraffin-embedded tissue after heat-induced antigen retrieval. Antibody concentration 5 ug/ml. This image was taken for the unconjugated form of this product. Other form ...