



[Go to Product page](#)

Datasheet for ABIN6747061
anti-DGCR8 antibody (AA 180-229)

2 Images

Overview

Quantity:	100 µL
Target:	DGCR8
Binding Specificity:	AA 180-229
Reactivity:	Human, Mouse, Rat, Cow, Dog, Guinea Pig, Monkey, Pig
Host:	Rabbit
Clonality:	Polyclonal
Conjugate:	This DGCR8 antibody is un-conjugated
Application:	Western Blotting (WB), Immunohistochemistry (IHC), Immunohistochemistry (Paraffin-embedded Sections) (IHC (p))

Product Details

Brand:	IHC-plus™
Immunogen:	Synthetic peptide located between aa180-229 of human DGCR8 (Q8WYQ5, NP_073557). Percent identity by BLAST analysis: Human, Chimpanzee, Gorilla, Gibbon, Monkey, Galago, Marmoset, Mouse, Rat, Elephant, Panda, Dog, Pig, Guinea pig (100%), Bat, Rabbit (92%), Opossum (85%), Bovine (84%). Type of Immunogen: Synthetic peptide
Isotype:	IgG
Specificity:	Human DGCR8
Predicted Reactivity:	Percent identity by BLAST analysis: Human, Mouse, Rat, Dog, Pig (100%) Rabbit (92%) Bovine

Product Details

(84%).

Purification: Immunoaffinity purified

Target Details

Target: DGCR8

Alternative Name: DGCR8 ([DGCR8 Products](#))

Background: Name/Gene ID: DGCR8

Synonyms: DGCR8, DGCRK6, Gy1, C22orf12, Pasha

Gene ID: 54487

NCBI Accession: [NP_073557](#)

UniProt: [Q8WYQ5](#)

Pathways: [Regulatory RNA Pathways](#)

Application Details

Application Notes: Approved: IHC, IHC-P (5 µg/mL), WB

Usage: ELISA titer using peptide based assay: 1:312500. Western Blot: Suggested dilution at 1 µg/mL in 5 % skim milk / PBS buffer, and HRP conjugated anti-Rabbit IgG should be diluted in 1:50000 - 100000 as second antibody.

Comment: Target Species of Antibody: Human

Restrictions: For Research Use only

Handling

Format: Lyophilized

Reconstitution: Distilled Water.

Concentration: Lot specific

Buffer: Lyophilized from PBS with 2 % sucrose

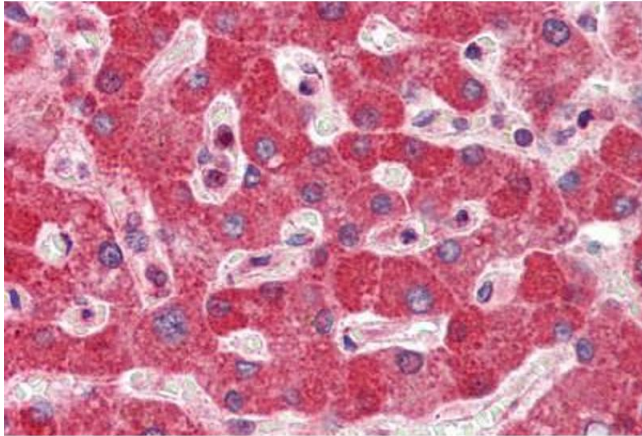
Handling Advice: Avoid repeat freeze-thaw cycles.

Storage: 4 °C, -20 °C

Handling

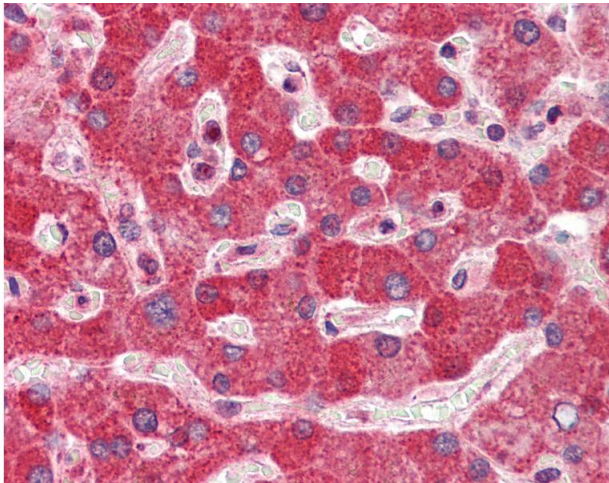
Storage Comment: Long term: -20°C, the use of 50% glycerol is recommended if storing aliquots in -20°C for long term use (up to 1 year)
Short term (less than 1 week): 4°C. Avoid freeze-thaw cycles.

Images



Immunohistochemistry (Formalin-fixed Paraffin-embedded Sections)

Image 1. Human Liver: Formalin-Fixed, Paraffin-Embedded (FFPE)



Immunohistochemistry

Image 2. Anti-DGCR8 antibody IHC of human liver. Immunohistochemistry of formalin-fixed, paraffin-embedded tissue after heat-induced antigen retrieval. Antibody concentration 5 ug/ml. This image was taken for the unconjugated form of this product. Other form ...