

Datasheet for ABIN6747062
anti-KLHL23 antibody (AA 432-481)

2 Images

[Go to Product page](#)

Overview

Quantity:	100 µL
Target:	KLHL23
Binding Specificity:	AA 432-481
Reactivity:	Human, Mouse, Rat, Rabbit, Cow, Dog, Guinea Pig, Horse, Bat, Hamster, Monkey, Pig
Host:	Rabbit
Clonality:	Polyclonal
Conjugate:	This KLHL23 antibody is un-conjugated
Application:	Western Blotting (WB), Immunohistochemistry (IHC), Immunohistochemistry (Paraffin-embedded Sections) (IHC (p))

Product Details

Brand:	IHC-plus™
Immunogen:	<p>Synthetic peptide located between aa432-481 of human KLHL23 (Q8NBE8, NP_653312).</p> <p>Percent identity by BLAST analysis: Human, Chimpanzee, Gorilla, Orangutan, Gibbon, Monkey, Galago, Marmoset, Mouse, Rat, Hamster, Elephant, Panda, Dog, Bovine, Bat, Rabbit, Horse, Pig, Opossum, Guinea pig (100%), Platypus (85%).</p> <p>Type of Immunogen: Synthetic peptide</p>
Isotype:	IgG
Specificity:	Human KLHL23
Predicted Reactivity:	Percent identity by BLAST analysis: Rat, Dog, Bovine, Rabbit, Horse, Pig (100%).

Product Details

Purification: Immunoaffinity purified

Target Details

Target: KLHL23

Alternative Name: KLHL23 ([KLHL23 Products](#))

Background: Name/Gene ID: KLHL23

Synonyms: KLHL23, DITHP, Kelch-like protein 23, Kelch-like 23 (Drosophila)

Gene ID: 151230

NCBI Accession: [NP_653312](#)

UniProt: [Q8NBE8](#)

Application Details

Application Notes: Approved: IHC, IHC-P (5 µg/mL), WB (0.2 - 1 µg/mL)

Usage: Western Blot: Suggested dilution at 1 µg/mL in 5 % skim milk / PBS buffer, and HRP conjugated anti-Rabbit IgG should be diluted in 1: 50,000 - 100,000 as second antibody. ELISA titer in peptide based assay: 1:62500.

Comment: Target Species of Antibody: Human

Restrictions: For Research Use only

Handling

Format: Lyophilized

Reconstitution: Distilled water

Concentration: Lot specific

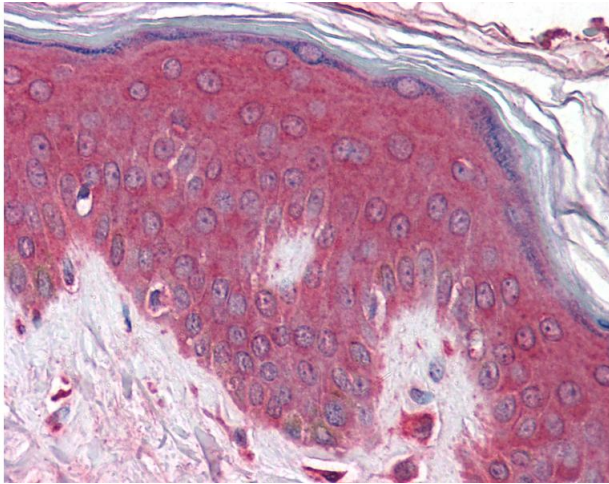
Buffer: Lyophilized from PBS with 2 % sucrose

Handling Advice: Avoid repeat freeze-thaw cycles.

Storage: 4 °C, -20 °C

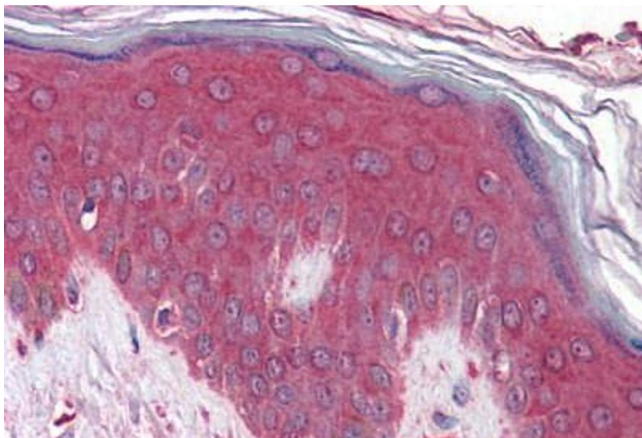
Storage Comment: Long term: -20°C, the use of 50% glycerol is recommended if storing aliquots in -20°C for long term use (up to 1 year)

Short term (less than 1 week): 4°C. Avoid freeze-thaw cycles.



Immunohistochemistry

Image 1. Anti-KLHL23 antibody IHC of human skin. Immunohistochemistry of formalin-fixed, paraffin-embedded tissue after heat-induced antigen retrieval. Antibody concentration 5 ug/ml. This image was taken for the unconjugated form of this product. Other form ...



Immunohistochemistry (Formalin-fixed Paraffin-embedded Sections)

Image 2. Human Skin: Formalin-Fixed, Paraffin-Embedded (FFPE)