

Datasheet for ABIN6747063
anti-RBM24 antibody (C-Term)



[Go to Product page](#)

2 Images

Overview

Quantity:	100 µL
Target:	RBM24
Binding Specificity:	C-Term
Reactivity:	Human, Mouse, Zebrafish (Danio rerio), Rat, Cow, Guinea Pig, Horse, Bat, Chicken, Monkey, Pig, Rabbit
Host:	Rabbit
Clonality:	Polyclonal
Conjugate:	This RBM24 antibody is un-conjugated
Application:	Western Blotting (WB), Immunohistochemistry (IHC), Immunohistochemistry (Paraffin-embedded Sections) (IHC (p))

Product Details

Brand:	IHC-plus™
Immunogen:	Synthetic peptide from C-Terminus of human RBM24 (Q9BX46-2, NP_694565). Percent identity by BLAST analysis: Human, Chimpanzee, Monkey, Galago, Marmoset, Mouse, Rat, Elephant, Bovine, Bat, Rabbit, Horse, Pig, Opossum, Guinea pig, Zebra finch, Chicken, Lizard (100%), Xenopus (92%), Turkey, Platypus, Zebrafish (85%). Type of Immunogen: Synthetic peptide
Specificity:	Human RBM24
Predicted Reactivity:	Percent identity by BLAST analysis: Human, Mouse, Rat, Bovine, Rabbit, Horse, Chicken (100%)

Product Details

Zebrafish (85%).

Purification: Immunoaffinity purified

Target Details

Target: RBM24

Alternative Name: RBM24 ([RBM24 Products](#))

Background: Name/Gene ID: RBM24

Synonyms: RBM24, DJ259A10.1, RNA-binding motif protein 24, RNA-binding protein 24, RNA binding motif protein 24, RNPC6

Gene ID: 221662

NCBI Accession: [NP_694565](#)

UniProt: [Q9BX46](#)

Pathways: [Regulation of Muscle Cell Differentiation, Skeletal Muscle Fiber Development](#)

Application Details

Application Notes: Approved: IHC, IHC-P (5 µg/mL), WB (0.2 - 1 µg/mL)

Usage: Western Blot: Suggested dilution at 1 µg/mL in 5 % skim milk / PBS buffer, and HRP conjugated anti-Rabbit IgG should be diluted in 1: 50,000 - 100,000 as secondary antibody.

Comment: Target Species of Antibody: Human

Restrictions: For Research Use only

Handling

Format: Lyophilized

Reconstitution: Distilled water

Concentration: Lot specific

Buffer: Lyophilized from PBS with 2 % sucrose

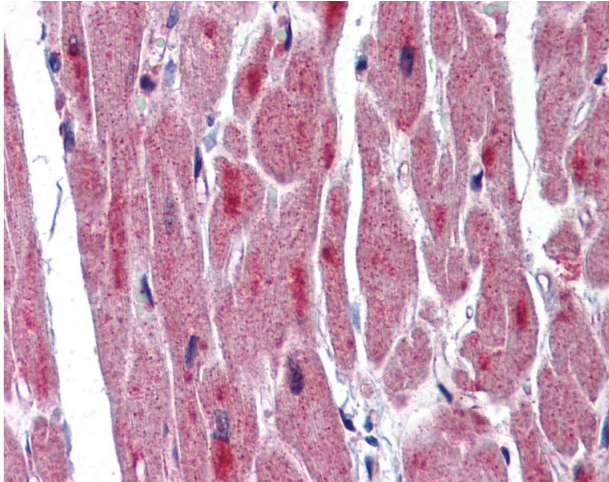
Handling Advice: Avoid repeat freeze-thaw cycles.

Storage: 4 °C,-20 °C

Handling

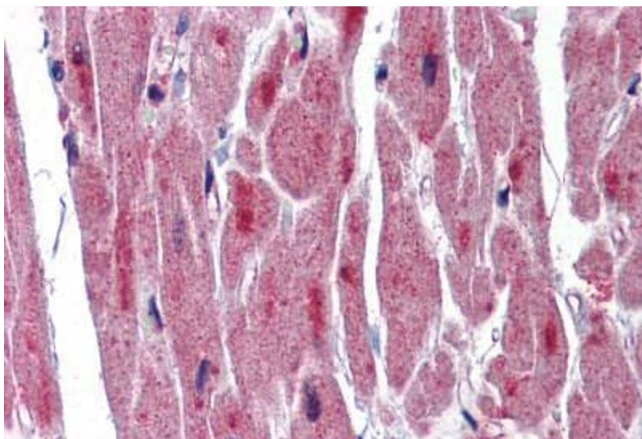
Storage Comment: Long term: -20°C, the use of 50% glycerol is recommended if storing aliquots in -20°C for long term use (up to 1 year)
Short term (less than 1 week): 4°C. Avoid freeze-thaw cycles.

Images



Immunohistochemistry

Image 1. Anti-RBM24 antibody IHC of human heart. Immunohistochemistry of formalin-fixed, paraffin-embedded tissue after heat-induced antigen retrieval. Antibody concentration 5 ug/ml. This image was taken for the unconjugated form of this product. Other form ...



Immunohistochemistry (Formalin-fixed Paraffin-embedded Sections)

Image 2. Human Heart: Formalin-Fixed, Paraffin-Embedded (FFPE)