

Datasheet for ABIN6747065  
**anti-FZD5 antibody (AA 467-516)**

## 2 Images

[Go to Product page](#)

## Overview

Quantity:	100 µL
Target:	FZD5
Binding Specificity:	AA 467-516
Reactivity:	Human, Mouse, Rat, Cow
Host:	Rabbit
Clonality:	Polyclonal
Conjugate:	This FZD5 antibody is un-conjugated
Application:	Western Blotting (WB), Immunohistochemistry (IHC), Immunohistochemistry (Paraffin-embedded Sections) (IHC (p))

## Product Details

Brand:	IHC-plus™
Immunogen:	Synthetic peptide located between aa467-516 of human FZD5 (Q13467, NP_003459). Percent identity by BLAST analysis: Human (100%), Gorilla (92%), Gibbon, Monkey, Galago, Mouse, Rat, Elephant, Dog, Bovine, Rabbit, Pig, Guinea pig (85%).  Type of Immunogen: Synthetic peptide
Specificity:	Human FZD5 / Frizzled 5
Predicted Reactivity:	Percent identity by BLAST analysis: Human (100%) Mouse, Rat, Bovine (85%).
Purification:	Immunoaffinity purified

## Target Details

Target:	FZD5
Alternative Name:	FZD5 / Frizzled 5 ( <a href="#">FZD5 Products</a> )
Background:	Name/Gene ID: FZD5 Subfamily: Frizzled Family: GPCR  Synonyms: FZD5, C2orf31, DKFZP434E2135, Frizzled family receptor 5, Fz5, Fzd-5, FzE5, Frizzled 5, Frizzled-5, Wnt receptor, Fz-5, HFZ5
Gene ID:	7855
NCBI Accession:	<a href="#">NP_003459</a>
UniProt:	<a href="#">Q13467</a>
Pathways:	<a href="#">WNT Signaling</a>

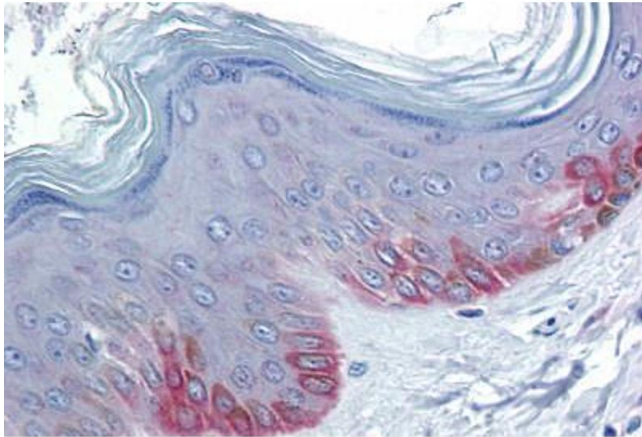
## Application Details

Application Notes:	Approved: IHC, IHC-P (10 µg/mL), WB (0.2 - 1 µg/mL)  Usage: Western Blot: Suggested dilution at 1 µg/mL in 5 % skim milk / PBS buffer, and HRP conjugated anti-Rabbit IgG should be diluted in 1: 50,000 - 100,000 as secondary antibody.
Comment:	Target Species of Antibody: Human
Restrictions:	For Research Use only

## Handling

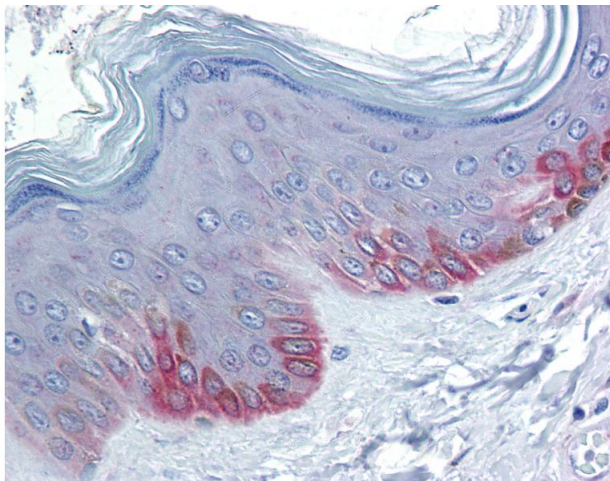
Format:	Lyophilized
Reconstitution:	Distilled water
Concentration:	Lot specific
Buffer:	Lyophilized from PBS with 2 % sucrose
Handling Advice:	Avoid repeat freeze-thaw cycles.
Storage:	4 °C, -20 °C
Storage Comment:	Long term: -20°C, the use of 50% glycerol is recommended if storing aliquots in -20°C for long term use (up to 1 year)

Short term (less than 1 week): 4°C. Avoid freeze-thaw cycles.



### Immunohistochemistry (Formalin-fixed Paraffin-embedded Sections)

**Image 1.** Human Skin: Formalin-Fixed, Paraffin-Embedded (FFPE)



### Immunohistochemistry

**Image 2.** Anti-FZD5 / Frizzled 5 antibody IHC of human skin. Immunohistochemistry of formalin-fixed, paraffin-embedded tissue after heat-induced antigen retrieval. Antibody concentration 10 ug/ml. This image was taken for the unconjugated form of this product ...