

Datasheet for ABIN6747067
anti-RHOU antibody (C-Term)

2 Images

[Go to Product page](#)

Overview

Quantity:	100 µL
Target:	RHOU
Binding Specificity:	C-Term
Reactivity:	Human, Cow, Dog, Rabbit, Horse, Monkey, Guinea Pig
Host:	Rabbit
Clonality:	Polyclonal
Conjugate:	This RHOU antibody is un-conjugated
Application:	Western Blotting (WB), Immunohistochemistry (IHC), Immunohistochemistry (Paraffin-embedded Sections) (IHC (p))

Product Details

Brand:	IHC-plus™
Immunogen:	Synthetic peptide from C-Terminus of human RHOU (Q7L0Q8, NP_067028). Percent identity by BLAST analysis: Human, Chimpanzee, Gorilla, Gibbon, Monkey, Marmoset, Elephant, Dog, Bovine, Rabbit, Horse, Lizard (100%), Galago, Mouse, Opossum, Turkey, Chicken (92%), Platypus (86%). Type of Immunogen: Synthetic peptide
Isotype:	IgG
Specificity:	Human RHOU
Predicted Reactivity:	Percent identity by BLAST analysis: Human, Dog, Bovine, Rabbit, Horse (100%) Mouse, Chicken

Product Details

(92%).

Purification: Immunoaffinity purified

Target Details

Target: RHOU

Alternative Name: ARHU / RHOU ([RHOU Products](#))

Background: Name/Gene ID: RHOU
Family: Ras GTPase superfamily IPR001806

Synonyms: RHOU, ARHU, CDC42-like GTPase 1, CDC42L1, DJ646B12.2, FJ646B12.2, G28K, GTP-binding protein-like 1, GTP-binding protein SB128, HG28K, GTP-binding protein like 1, Ras homolog family member U, Rho GTPase-like protein ARHU, Ryu GTPase, Ras-like gene family member U, Wnt-1 responsive Cdc42 homolog, WRCH-1, WRCH1

Gene ID: 58480

NCBI Accession: [NP_067028](#)

UniProt: [Q7L0Q8](#)

Application Details

Application Notes: Approved: IHC, IHC-P (5 µg/mL), WB

Usage: ELISA titer using peptide based assay: 1:1562500. Western Blot: Suggested dilution at 1 µg/mL in 5 % skim milk / PBS buffer, and HRP conjugated anti-Rabbit IgG should be diluted in 1:50000 - 100000 as second antibody.

Comment: Target Species of Antibody: Human

Restrictions: For Research Use only

Handling

Format: Lyophilized

Reconstitution: Distilled Water.

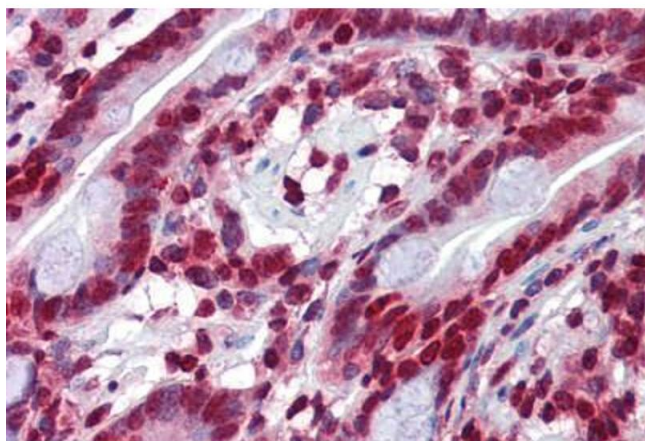
Concentration: Lot specific

Buffer: Lyophilized from PBS with 2 % sucrose

Handling

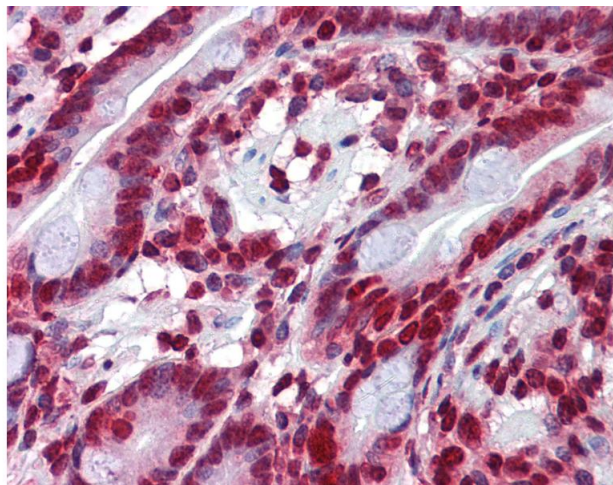
Handling Advice:	Avoid repeat freeze-thaw cycles.
Storage:	4 °C,-20 °C
Storage Comment:	Long term: -20°C, the use of 50% glycerol is recommended if storing aliquots in -20°C for long term use (up to 1 year) Short term (less than 1 week): 4°C. Avoid freeze-thaw cycles.

Images



Immunohistochemistry (Formalin-fixed Paraffin-embedded Sections)

Image 1. Human Small Intestine: Formalin-Fixed, Paraffin-Embedded (FFPE)



Immunohistochemistry

Image 2. Anti-RHOU antibody IHC of human small intestine. Immunohistochemistry of formalin-fixed, paraffin-embedded tissue after heat-induced antigen retrieval. Antibody concentration 5 ug/ml. This image was taken for the unconjugated form of this product. O ...