



[Go to Product page](#)

Datasheet for ABIN6747078
anti-KRT16 antibody (AA 251-300)

2 Images

Overview

Quantity:	100 µL
Target:	KRT16
Binding Specificity:	AA 251-300
Reactivity:	Human, Mouse, Rat, Horse
Host:	Rabbit
Clonality:	Polyclonal
Conjugate:	This KRT16 antibody is un-conjugated
Application:	Western Blotting (WB), Immunohistochemistry (IHC), Immunohistochemistry (Paraffin-embedded Sections) (IHC (p))

Product Details

Brand:	IHC-plus™
Immunogen:	Synthetic peptide located between aa251-300 of human KRT16 (P08779, NP_005548). Percent identity by BLAST analysis: Human, Chimpanzee, Gorilla, Gibbon, Marmoset, Mouse, Rat, Horse (100%), Monkey, Panda, Bovine, Bat, Pig, Opossum (92%), Rabbit (91%), Elephant, Dog (84%), Hamster, Guinea pig (83%). Type of Immunogen: Synthetic peptide
Specificity:	Human KRT16 / Cytokeratin 16
Predicted Reactivity:	Percent identity by BLAST analysis: Human, Mouse, Rat, Horse (100%) Bovine (92%).
Purification:	Immunoaffinity purified

Target Details

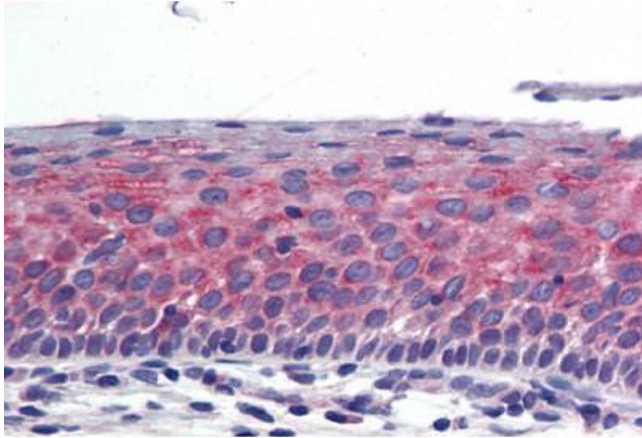
Target:	KRT16
Alternative Name:	KRT16 / CK16 / Cytokeratin 16 (KRT16 Products)
Background:	Name/Gene ID: KRT16 Synonyms: KRT16, CK16, Cytokeratin 16, Cytokeratin-16, FNEPPK, K1CP, Keratin-16, Keratin 16, NEPPK, CK-16, K16, KRT16A
Gene ID:	3868
NCBI Accession:	NP_005548

Application Details

Application Notes:	Approved: IHC, IHC-P (5 µg/mL), WB (0.2 - 1 µg/mL) Usage: Western Blot: Suggested dilution at 1 µg/mL in 5 % skim milk / PBS buffer, and HRP conjugated anti-Rabbit IgG should be diluted in 1: 50,000 - 100,000 as secondary antibody.
Comment:	Target Species of Antibody: Human
Restrictions:	For Research Use only

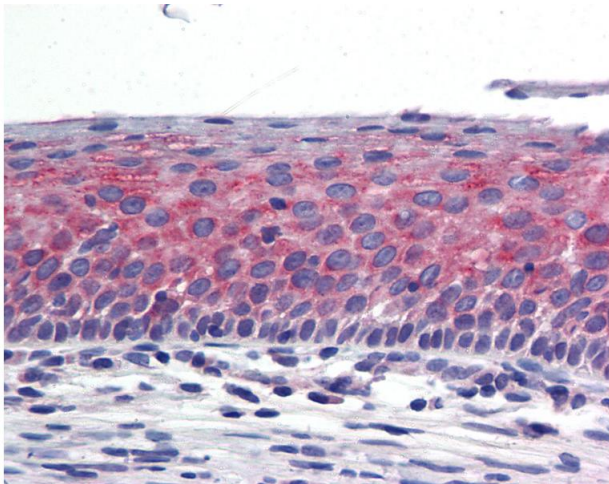
Handling

Format:	Lyophilized
Reconstitution:	Distilled water
Concentration:	Lot specific
Buffer:	Lyophilized from PBS with 2 % sucrose
Storage:	4 °C,-20 °C
Storage Comment:	Long term: -20°C, the use of 50% glycerol is recommended if storing aliquots in -20°C for long term use (up to 1 year) Short term (less than 1 week): 4°C. Avoid freeze-thaw cycles.



Immunohistochemistry (Formalin-fixed Paraffin-embedded Sections)

Image 1. Human Tonsil: Formalin-Fixed, Paraffin-Embedded (FFPE)



Immunohistochemistry

Image 2. Anti-KRT16 / Cytokeratin 16 antibody IHC of human tonsil. Immunohistochemistry of formalin-fixed, paraffin-embedded tissue after heat-induced antigen retrieval. Antibody concentration 5 ug/ml. This image was taken for the unconjugated form of this p ...