

## Datasheet for ABIN6747081 anti-MPDZ antibody (AA 1691-1740)



[Go to Product page](#)

### 2 Images

#### Overview

Quantity:	100 µL
Target:	MPDZ
Binding Specificity:	AA 1691-1740
Reactivity:	Human, Mouse, Rat, Cow, Dog, Guinea Pig, Horse, Rabbit, Bat, Pig
Host:	Rabbit
Clonality:	Polyclonal
Conjugate:	This MPDZ antibody is un-conjugated
Application:	Western Blotting (WB), Immunohistochemistry (IHC), Immunohistochemistry (Paraffin-embedded Sections) (IHC (p))

#### Product Details

Brand:	IHC-plus™
Immunogen:	<p>Synthetic peptide located between aa1691-1740 of human MPDZ (075970, NP_003820).</p> <p>Percent identity by BLAST analysis: Human, Chimpanzee, Gorilla, Gibbon, Galago, Mouse, Rat, Dog, Bovine, Bat, Rabbit, Horse, Guinea pig (100%), Marmoset, Elephant (92%), Pig, Zebra finch, Chicken, Platypus, Lizard (85%).</p> <p>Type of Immunogen: Synthetic peptide</p>
Specificity:	Human MPDZ
Predicted Reactivity:	Percent identity by BLAST analysis: Human, Mouse, Rat, Dog, Bovine, Rabbit, Horse, Guinea pig (100%) Pig, Chicken (85%).

## Product Details

Purification: Immunoaffinity purified

## Target Details

Target: MPDZ

Alternative Name: MPDZ / MUPP1 ([MPDZ Products](#))

Background: Name/Gene ID: MPDZ

Synonyms: MPDZ, Multi-PDZ domain protein 1, MUPP1, Multiple PDZ domain protein

Gene ID: 8777

NCBI Accession: [NP\\_003820](#)

UniProt: [O75970](#)

Pathways: [Synaptic Membrane](#), [Phototransduction](#)

## Application Details

Application Notes: Approved: IHC, IHC-P (5 µg/mL), WB (0.2 - 1 µg/mL)

Usage: Western Blot: Suggested dilution at 1 µg/mL in 5 % skim milk / PBS buffer, and HRP conjugated anti-Rabbit IgG should be diluted in 1: 50,000 - 100,000 as secondary antibody.

Comment: Target Species of Antibody: Human

Restrictions: For Research Use only

## Handling

Format: Lyophilized

Reconstitution: Distilled water

Concentration: Lot specific

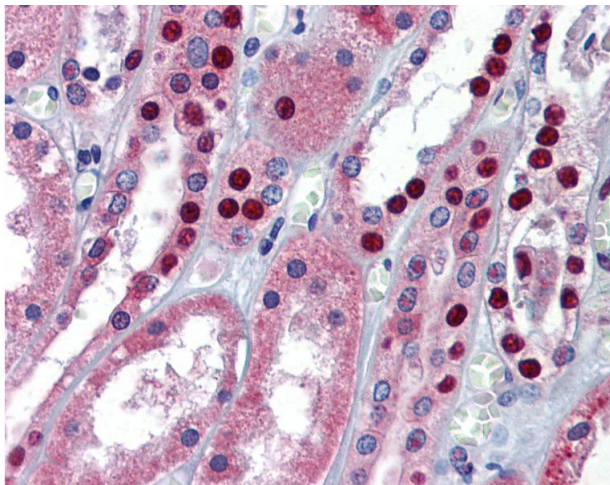
Buffer: Lyophilized from PBS with 2 % sucrose

Handling Advice: Avoid repeat freeze-thaw cycles.

Storage: 4 °C, -20 °C

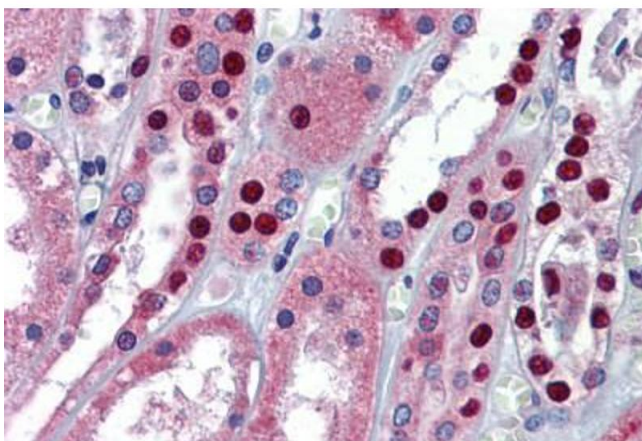
Storage Comment: Long term: -20°C, the use of 50% glycerol is recommended if storing aliquots in -20°C for long term use (up to 1 year)

Short term (less than 1 week): 4°C. Avoid freeze-thaw cycles.



### Immunohistochemistry

**Image 1.** Anti-MPDZ antibody IHC of human kidney. Immunohistochemistry of formalin-fixed, paraffin-embedded tissue after heat-induced antigen retrieval. Antibody concentration 5 ug/ml. This image was taken for the unconjugated form of this product. Other form ...



### Immunohistochemistry (Formalin-fixed Paraffin-embedded Sections)

**Image 2.** Human Kidney: Formalin-Fixed, Paraffin-Embedded (FFPE)