

Datasheet for ABIN6747082  
**anti-CHFR antibody (AA 36-85)**[Go to Product page](#)

## 2 Images

## Overview

Quantity:	100 µL
Target:	CHFR
Binding Specificity:	AA 36-85
Reactivity:	Human, Mouse, Rat, Rabbit, Zebrafish (Danio rerio), Guinea Pig, Monkey
Host:	Rabbit
Clonality:	Polyclonal
Conjugate:	This CHFR antibody is un-conjugated
Application:	Western Blotting (WB), Immunohistochemistry (IHC), Immunohistochemistry (Paraffin-embedded Sections) (IHC (p))

## Product Details

Brand:	IHC-plus™
Immunogen:	Synthetic peptide located between aa36-85 of human CHFR (Q96EP1, NP_060693). Percent identity by BLAST analysis: Human, Chimpanzee, Gorilla, Orangutan, Gibbon, Galago, Marmoset, Mouse, Rat, Rabbit, Guinea pig (100%), Elephant, Dog, Bovine, Bat, Horse, Pig, Opossum, Turkey, Zebra finch, Chicken, Platypus (92%), Xenopus, Salmon, Zebrafish (85%), Stickleback (84%).  Type of Immunogen: Synthetic peptide
Isotype:	IgG
Specificity:	Human CHFR
Predicted Reactivity:	Percent identity by BLAST analysis: Human, Mouse, Rat, Rabbit, Guinea pig (100%) Dog, Bovine,

## Product Details

Horse, Pig, Chicken (92%) Xenopus, Zebrafish (85%).

Purification: Immunoaffinity purified

## Target Details

Target: CHFR

Alternative Name: CHFR ([CHFR Products](#))

Background: Name/Gene ID: CHFR

Synonyms: CHFR, RING finger protein 196, RNF196, RNF116

Gene ID: 55743

NCBI Accession: [NP\\_060693](#)

## Application Details

Application Notes: Approved: IHC, IHC-P (2.5 µg/mL), WB (0.2 - 1 µg/mL)

Usage: Western Blot: Suggested dilution at 1 µg/mL in 5 % skim milk / PBS buffer, and HRP conjugated anti-Rabbit IgG should be diluted in 1: 50,000 - 100,000 as second antibody. ELISA titer in peptide based assay: 1:312500.

Comment: Target Species of Antibody: Human

Restrictions: For Research Use only

## Handling

Format: Lyophilized

Reconstitution: Distilled water

Concentration: Lot specific

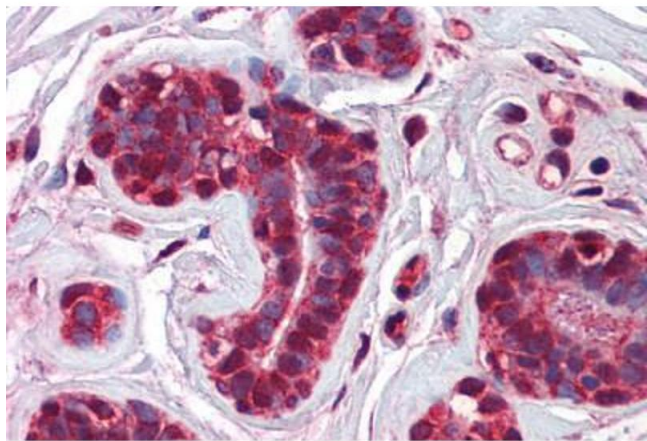
Buffer: Lyophilized from PBS with 2 % sucrose

Handling Advice: Avoid repeat freeze-thaw cycles.

Storage: 4 °C, -20 °C

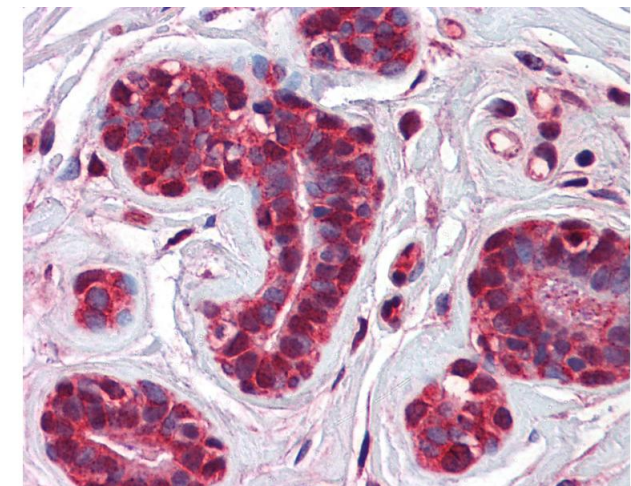
Storage Comment: Long term: -20°C, the use of 50% glycerol is recommended if storing aliquots in -20°C for long term use (up to 1 year)

Short term (less than 1 week): 4°C. Avoid freeze-thaw cycles.



**Immunohistochemistry (Formalin-fixed Paraffin-embedded Sections)**

**Image 1.** Human Breast: Formalin-Fixed, Paraffin-Embedded (FFPE)



**Immunohistochemistry**

**Image 2.** Anti-CHFR antibody IHC of human breast. Immunohistochemistry of formalin-fixed, paraffin-embedded tissue after heat-induced antigen retrieval. Antibody concentration 2.5 ug/ml. This image was taken for the unconjugated form of this product. Other fo ...