



[Go to Product page](#)

Datasheet for ABIN6747084
anti-ABCC8 antibody (N-Term)

2 Images

Overview

Quantity:	100 µL
Target:	ABCC8
Binding Specificity:	N-Term
Reactivity:	Human, Rat, Mouse, Cow, Pig, Rabbit, Bat, Monkey
Host:	Rabbit
Clonality:	Polyclonal
Conjugate:	This ABCC8 antibody is un-conjugated
Application:	Western Blotting (WB), Immunohistochemistry (IHC), Immunohistochemistry (Paraffin-embedded Sections) (IHC (p))

Product Details

Brand:	IHC-plus™
Immunogen:	Synthetic peptide from N-Terminus of human ABCC8 (Q09428, NP_000343). Percent identity by BLAST analysis: Human, Gorilla, Galago, Marmoset, Mouse, Rat, Bovine, Bat, Rabbit, Pig (100%), Opossum (92%), Platypus (84%). Type of Immunogen: Synthetic peptide
Specificity:	Human ABCC8 / MRP8
Predicted Reactivity:	Percent identity by BLAST analysis: Human, Mouse, Rat, Bovine, Rabbit, Pig (100%).
Purification:	Immunoaffinity purified

Target Details

Target:	ABCC8
Alternative Name:	ABCC8 / SUR1 (ABCC8 Products)
Background:	Name/Gene ID: ABCC8 Subfamily: ATP-binding cassette - ABCC/MRP Family: Transporter Synonyms: ABCC8, ABC36, HI, PHHI, Sulfonylurea receptor, SUR, Sulfonylurea receptor 1, MRP8, SUR1delta2, HHF1, HRINS, SUR1, TNDM2
Gene ID:	6833
NCBI Accession:	NP_000343
UniProt:	Q09428
Pathways:	Negative Regulation of Hormone Secretion

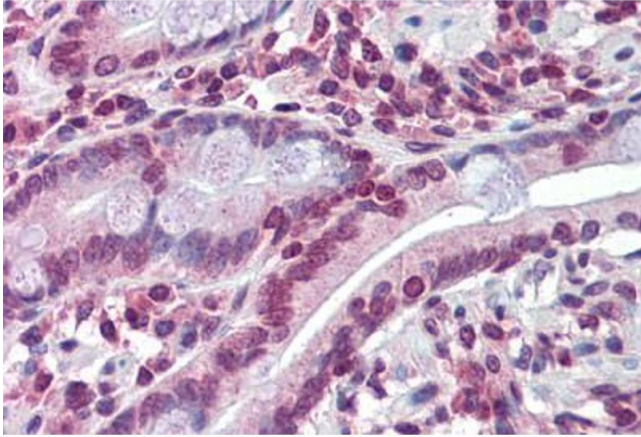
Application Details

Application Notes:	Approved: IHC, IHC-P (5 µg/mL), WB (0.2 - 1 µg/mL) Usage: Western Blot: Suggested dilution at 1 µg/mL in 5 % skim milk / PBS buffer, and HRP conjugated anti-Rabbit IgG should be diluted in 1: 50,000 - 100,000 as secondary antibody.
Comment:	Target Species of Antibody: Human
Restrictions:	For Research Use only

Handling

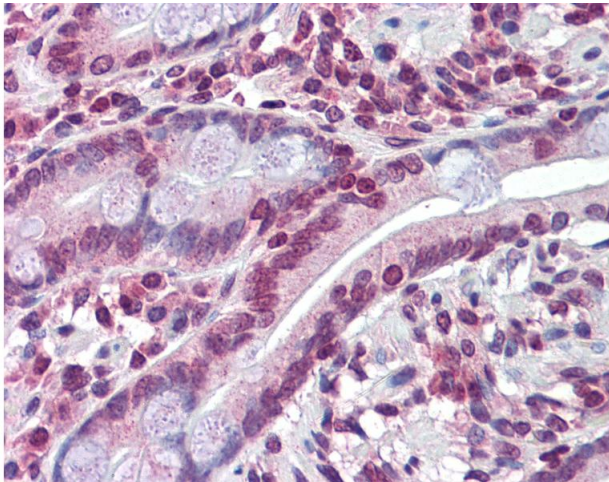
Format:	Lyophilized
Reconstitution:	Distilled water
Concentration:	Lot specific
Buffer:	Lyophilized from PBS with 2 % sucrose
Handling Advice:	Avoid repeat freeze-thaw cycles.
Storage:	4 °C,-20 °C
Storage Comment:	Long term: -20°C, the use of 50% glycerol is recommended if storing aliquots in -20°C for long term use (up to 1 year)

Short term (less than 1 week): 4°C. Avoid freeze-thaw cycles.



Immunohistochemistry (Formalin-fixed Paraffin-embedded Sections)

Image 1. Human Small Intestine: Formalin-Fixed, Paraffin-Embedded (FFPE)



Immunohistochemistry

Image 2. Anti-ABCC8 antibody IHC of human small intestine. Immunohistochemistry of formalin-fixed, paraffin-embedded tissue after heat-induced antigen retrieval. Antibody concentration 5 ug/ml. This image was taken for the unconjugated form of this product. ...