

Datasheet for ABIN6747086
anti-SLC36A2 antibody (AA 36-85)

2 Images

[Go to Product page](#)

Overview

Quantity:	100 µL
Target:	SLC36A2
Binding Specificity:	AA 36-85
Reactivity:	Human
Host:	Rabbit
Clonality:	Polyclonal
Conjugate:	This SLC36A2 antibody is un-conjugated
Application:	Western Blotting (WB), Immunohistochemistry (IHC), Immunohistochemistry (Paraffin-embedded Sections) (IHC (p))

Product Details

Brand:	IHC-plus™
Immunogen:	Synthetic peptide located between aa36-85 of human SLC36A2 (Q495M3, NP_861441). Percent identity by BLAST analysis: Human, Orangutan (100%), Gorilla, Gibbon, Monkey (92%), Marmoset (85%). Type of Immunogen: Synthetic peptide
Isotype:	IgG
Specificity:	Human SLC36A2
Predicted Reactivity:	Percent identity by BLAST analysis: Human (100%).
Purification:	Immunoaffinity purified

Target Details

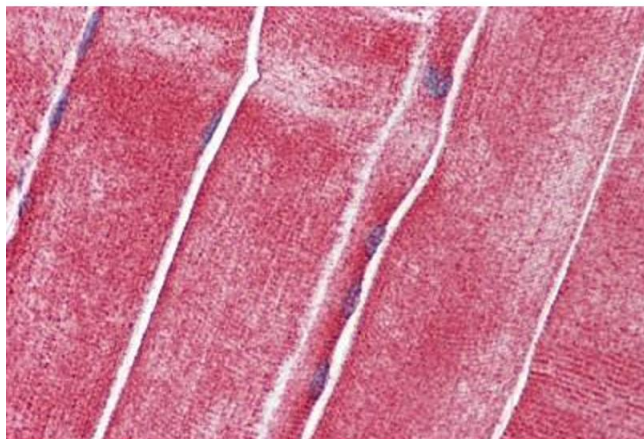
Target:	SLC36A2
Alternative Name:	SLC36A2 PAT2 (SLC36A2 Products)
Background:	Name/Gene ID: SLC36A2 Synonyms: SLC36A2, PAT2, Tramdorin-1, TRAMD1, Tramdorin
Gene ID:	153201
NCBI Accession:	NP_861441
UniProt:	Q495M3
Pathways:	Proton Transport

Application Details

Application Notes:	Approved: IHC, IHC-P (5 µg/mL), WB (0.2 - 1 µg/mL) Usage: Western Blot: Suggested dilution at 1 µg/mL in 5 % skim milk / PBS buffer, and HRP conjugated anti-Rabbit IgG should be diluted in 1: 50,000 - 100,000 as second antibody. ELISA titer in peptide based assay: 1:312500.
Comment:	Target Species of Antibody: Human
Restrictions:	For Research Use only

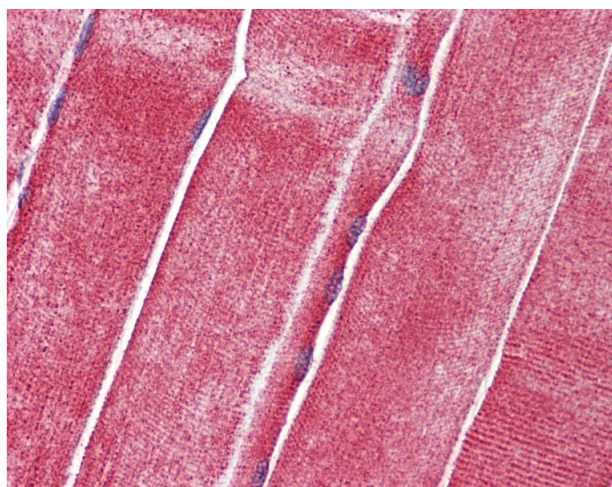
Handling

Format:	Lyophilized
Reconstitution:	Distilled water
Concentration:	Lot specific
Buffer:	Lyophilized from PBS with 2 % sucrose
Handling Advice:	Avoid repeat freeze-thaw cycles.
Storage:	4 °C,-20 °C
Storage Comment:	Long term: -20°C, the use of 50% glycerol is recommended if storing aliquots in -20°C for long term use (up to 1 year) Short term (less than 1 week): 4°C. Avoid freeze-thaw cycles.



Immunohistochemistry (Formalin-fixed Paraffin-embedded Sections)

Image 1. Human Skeletal Muscle: Formalin-Fixed, Paraffin-Embedded (FFPE)



Immunohistochemistry

Image 2. Anti-SLC36A2 antibody IHC of human skeletal muscle. Immunohistochemistry of formalin-fixed, paraffin-embedded tissue after heat-induced antigen retrieval. Antibody concentration 5 ug/ml. This image was taken for the unconjugated form of this product ...