

Datasheet for ABIN6747088
anti-Patched 1 antibody (AA 58-107)[Go to Product page](#)

2 Images

Overview

Quantity:	100 µL
Target:	Patched 1 (PTCH1)
Binding Specificity:	AA 58-107
Reactivity:	Human, Mouse, Rat, Zebrafish (Danio rerio), Dog, Cow, Horse, Monkey, Guinea Pig
Host:	Rabbit
Clonality:	Polyclonal
Conjugate:	This Patched 1 antibody is un-conjugated
Application:	Western Blotting (WB), Immunohistochemistry (IHC), Immunohistochemistry (Paraffin-embedded Sections) (IHC (p))

Product Details

Brand:	IHC-plus™
Immunogen:	Synthetic peptide located between aa58-107 of human PTCH1 (Q6TKP8). Percent identity by BLAST analysis: Human, Gorilla, Gibbon, Monkey, Galago, Marmoset, Mouse, Rat, Dog, Bovine, Horse, Guinea pig (100%), Elephant, Bat, Rabbit, Opossum (92%), Zebra finch (85%). Type of Immunogen: Synthetic peptide
Isotype:	IgG
Specificity:	Human PTCH1
Predicted Reactivity:	Percent identity by BLAST analysis: Human, Mouse, Rat, Dog, Bovine, Horse, Guinea pig (100%) Rabbit (92%).

Product Details

Purification: Immunoaffinity purified

Target Details

Target: Patched 1 (PTCH1)

Alternative Name: PTCH1 / Patched ([PTCH1 Products](#))

Background: Name/Gene ID: PTCH1

Synonyms: PTCH1, NBCCS, Patched 1, Patched homolog 1, Protein patched homolog 1, PTC1, PTCH, PTCH protein +12b, PTCH protein -10, PTCH protein -3,4,5, Patched, Patched protein homolog 1, BCNS, HPE7, Patched homolog, PTC, PTCH protein +4, PTCH11

Gene ID: 5727

UniProt: [Q13635](#)

Pathways: [Hedgehog Signaling](#), [Carbohydrate Homeostasis](#), [Tube Formation](#)

Application Details

Application Notes: Approved: IHC, IHC-P (5 µg/mL), WB (0.2 - 1 µg/mL)

Comment: Target Species of Antibody: Human

Restrictions: For Research Use only

Handling

Format: Lyophilized

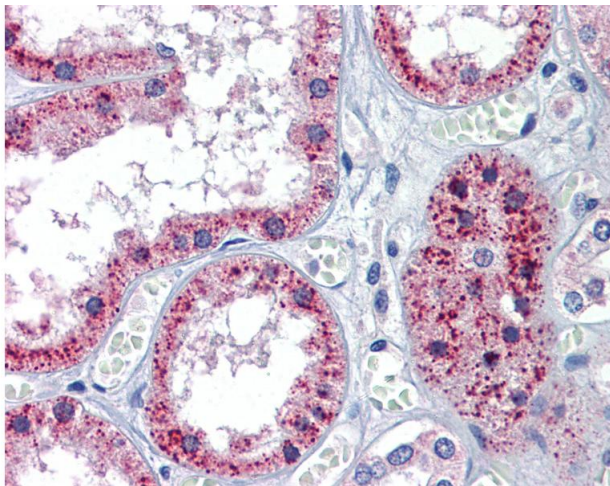
Reconstitution: Distilled water

Concentration: Lot specific

Buffer: Lyophilized from PBS with 2 % sucrose

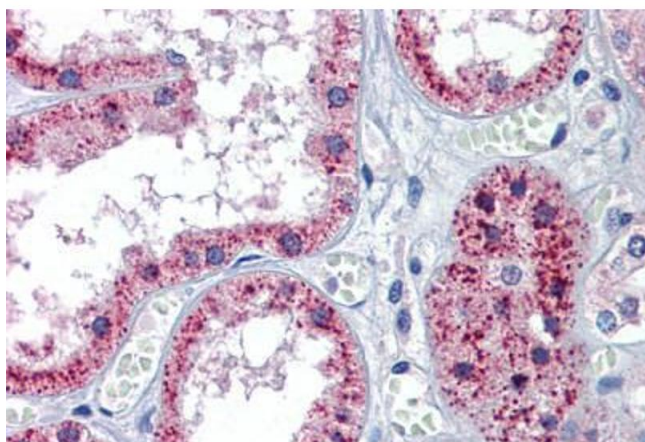
Storage: 4 °C, -20 °C

Storage Comment: Long term: -20°C, the use of 50% glycerol is recommended if storing aliquots in -20°C for long term use (up to 1 year)
Short term (less than 1 week): 4°C. Avoid freeze-thaw cycles.



Immunohistochemistry

Image 1. Anti-PTCH1 antibody IHC of human kidney. Immunohistochemistry of formalin-fixed, paraffin-embedded tissue after heat-induced antigen retrieval. Antibody concentration 5 ug/ml. This image was taken for the unconjugated form of this product. Other for ...



Immunohistochemistry (Formalin-fixed Paraffin-embedded Sections)

Image 2. Human Kidney: Formalin-Fixed, Paraffin-Embedded (FFPE)