



[Go to Product page](#)

Datasheet for ABIN6747092

## anti-Neuregulin 3 antibody (AA 540-589)

### 2 Images

#### Overview

Quantity:	100 µL
Target:	Neuregulin 3 (NRG3)
Binding Specificity:	AA 540-589
Reactivity:	Human, Mouse, Rat, Dog, Rabbit
Host:	Rabbit
Clonality:	Polyclonal
Conjugate:	This Neuregulin 3 antibody is un-conjugated
Application:	Western Blotting (WB), Immunohistochemistry (IHC), Immunohistochemistry (Paraffin-embedded Sections) (IHC (p))

#### Product Details

Brand:	IHC-plus™
Immunogen:	Synthetic peptide located between aa540-589 of human NRG3 (P56975-4, NP_001010848). Percent identity by BLAST analysis: Human, Chimpanzee, Gorilla, Gibbon, Monkey, Galago, Mouse, Rat, Rabbit (100%), Marmoset, Bovine, Bat, Horse, Pig, Opossum, Guinea pig (92%), Turkey, Zebra finch, Chicken (91%), Elephant, Dog (85%).  Type of Immunogen: Synthetic peptide
Isotype:	IgG
Specificity:	Human NRG3
Predicted Reactivity:	Percent identity by BLAST analysis: Human, Mouse, Rat, Rabbit (100%) Bovine, Horse, Pig,

## Product Details

---

Guinea pig (92%) Chicken (91%) Dog (85%).

Purification: Immunoaffinity purified

## Target Details

---

Target: Neuregulin 3 (NRG3)

Alternative Name: NRG3 ([NRG3 Products](#))

Background: Name/Gene ID: NRG3

Synonyms: NRG3, Neuregulin-3-like polypeptide, Neuregulin 3, Pro-NRG3, HRG3

Gene ID: 10718

NCBI Accession: [NP\\_001010848](#)

UniProt: [P56975](#)

Pathways: [RTK Signaling](#)

## Application Details

---

Application Notes: Approved: IHC, IHC-P (5 µg/mL), WB (0.2 - 1 µg/mL)

Usage: Western Blot: Suggested dilution at 1 µg/mL in 5 % skim milk / PBS buffer, and HRP conjugated anti-Rabbit IgG should be diluted in 1: 50,000 - 100,000 as second antibody. ELISA titer in peptide based assay: 1:312500.

Comment: Target Species of Antibody: Human

Restrictions: For Research Use only

## Handling

---

Format: Lyophilized

Reconstitution: Reconstitute with 50 µL sterile ddH<sub>2</sub>O.

Concentration: Lot specific

Buffer: Lyophilized from PBS with 2 % sucrose

Handling Advice: Avoid repeat freeze-thaw cycles.

Storage: 4 °C, -20 °C

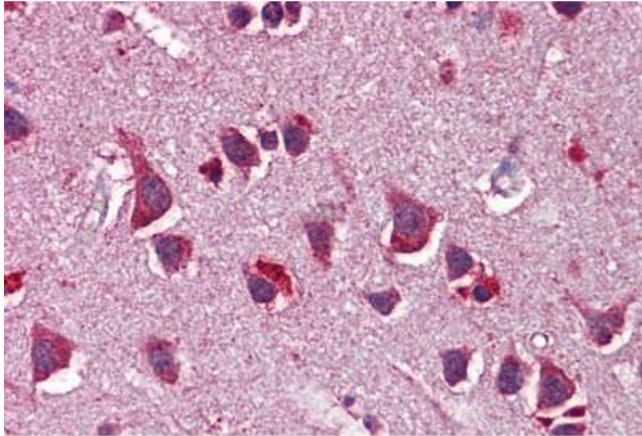
## Handling

---

Storage Comment: Long term: -20°C, the use of 50% glycerol is recommended if storing aliquots in -20°C for long term use (up to 1 year)  
Short term (less than 1 week): 4°C. Avoid freeze-thaw cycles.

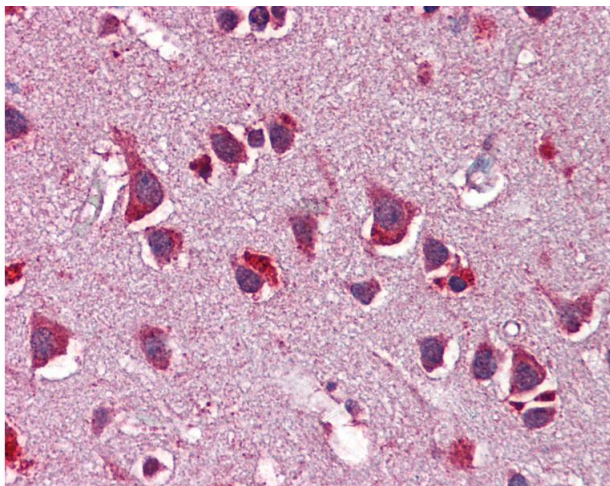
## Images

---



### Immunohistochemistry (Formalin-fixed Paraffin-embedded Sections)

**Image 1.** Human Brain, Cortex: Formalin-Fixed, Paraffin-Embedded (FFPE)



### Immunohistochemistry

**Image 2.** Anti-NRG3 antibody IHC of human brain, cortex. Immunohistochemistry of formalin-fixed, paraffin-embedded tissue after heat-induced antigen retrieval. Antibody concentration 5 ug/ml. This image was taken for the unconjugated form of this product. Oth ...