

Datasheet for ABIN6747094
anti-SC5DL antibody (AA 71-120)

2 Images

[Go to Product page](#)

Overview

Quantity:	100 µL
Target:	SC5DL
Binding Specificity:	AA 71-120
Reactivity:	Human, Monkey
Host:	Rabbit
Clonality:	Polyclonal
Conjugate:	This SC5DL antibody is un-conjugated
Application:	Western Blotting (WB), Immunohistochemistry (IHC), Immunohistochemistry (Paraffin-embedded Sections) (IHC (p))

Product Details

Brand:	IHC-plus™
Immunogen:	Synthetic peptide located between aa71-120 of human SC5D (O75845, NP_001020127). Percent identity by BLAST analysis: Human, Chimpanzee, Gorilla, Gibbon, Monkey, Marmoset (100%). Type of Immunogen: Synthetic peptide
Specificity:	Human SC5DL
Predicted Reactivity:	Percent identity by BLAST analysis: Human (100%).
Purification:	Immunoaffinity purified

Target Details

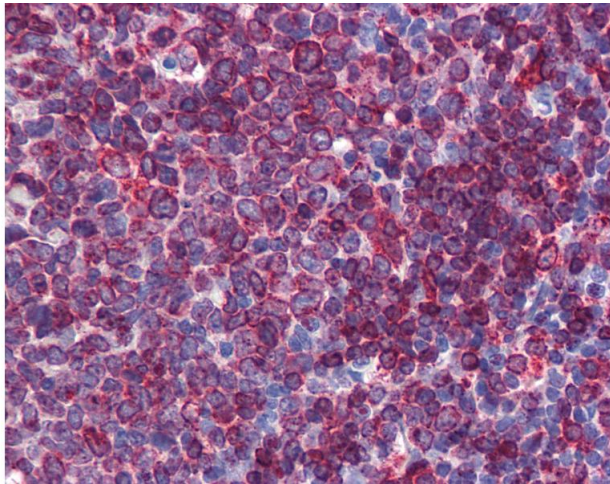
Target:	SC5DL
Alternative Name:	SC5D / ERG3 (SC5DL Products)
Background:	Name/Gene ID: SC5D Synonyms: SC5D, C-5 sterol desaturase, Delta(7)-sterol 5-desaturase, ERG3, Lathosterol 5-desaturase, Lathosterol dehydrogenase, Lathosterol oxidase, SC5DL, Sterol-C5-desaturase, S5DES
Gene ID:	6309
NCBI Accession:	NP_001020127
UniProt:	O75845

Application Details

Application Notes:	Approved: IHC, IHC-P (5 µg/mL), WB (0.2 - 1 µg/mL) Usage: Western Blot: Suggested dilution at 1 µg/mL in 5 % skim milk / PBS buffer, and HRP conjugated anti-Rabbit IgG should be diluted in 1: 50,000 - 100,000 as secondary antibody.
Comment:	Target Species of Antibody: Human
Restrictions:	For Research Use only

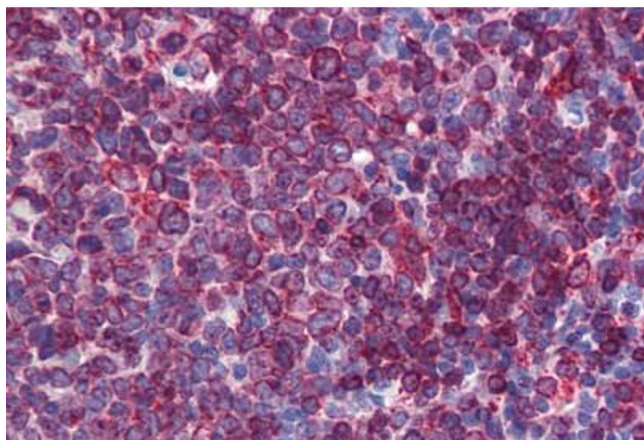
Handling

Format:	Lyophilized
Reconstitution:	Distilled water
Concentration:	Lot specific
Buffer:	Lyophilized from PBS with 2 % sucrose
Handling Advice:	Avoid repeat freeze-thaw cycles.
Storage:	4 °C, -20 °C
Storage Comment:	Long term: -20°C, the use of 50% glycerol is recommended if storing aliquots in -20°C for long term use (up to 1 year) Short term (less than 1 week): 4°C. Avoid freeze-thaw cycles.



Immunohistochemistry

Image 1. Anti-SC5DL antibody IHC of human tonsil. Immunohistochemistry of formalin-fixed, paraffin-embedded tissue after heat-induced antigen retrieval. Antibody concentration 5 ug/ml. This image was taken for the unconjugated form of this product. Other for ...



Immunohistochemistry (Formalin-fixed Paraffin-embedded Sections)

Image 2. Human Tonsil: Formalin-Fixed, Paraffin-Embedded (FFPE)