



[Go to Product page](#)

Datasheet for ABIN6747098
anti-ROBO2 antibody (AA 252-301)

2 Images

Overview

Quantity:	100 µL
Target:	ROBO2
Binding Specificity:	AA 252-301
Reactivity:	Human, Mouse, Rat, Cow, Chicken, Dog, Horse, Rabbit, Zebrafish (Danio rerio), Monkey, Pig
Host:	Rabbit
Clonality:	Polyclonal
Conjugate:	This ROBO2 antibody is un-conjugated
Application:	Western Blotting (WB), Immunohistochemistry (IHC), Immunohistochemistry (Paraffin-embedded Sections) (IHC (p))

Product Details

Brand:	IHC-plus™
Immunogen:	Synthetic peptide located between aa252-301 of human ROBO2 (Q9HCK4, NP_002933). Percent identity by BLAST analysis: Human, Chimpanzee, Gorilla, Gibbon, Monkey, Galago, Marmoset, Mouse, Rat, Elephant, Dog, Bovine, Rabbit, Horse, Pig, Zebra finch, Chicken, Platypus (100%), Bat (92%), Opossum (85%). Type of Immunogen: Synthetic peptide
Isotype:	IgG
Specificity:	Human ROBO2
Predicted Reactivity:	Percent identity by BLAST analysis: Human, Mouse, Rat, Dog, Bovine, Rabbit, Horse, Pig,

Product Details

Chicken (100%).

Purification: Immunoaffinity purified

Target Details

Target: ROB02

Alternative Name: ROB02 ([ROB02 Products](#))

Background: Name/Gene ID: ROB02

Synonyms: ROB02, KIAA1568, Roundabout homolog 2, SAX3

Gene ID: 6092

NCBI Accession: [NP_002933](#)

UniProt: [Q9HCK4](#)

Pathways: [Regulation of Cell Size](#)

Application Details

Application Notes: Approved: IHC, IHC-P (5 µg/mL), WB (0.2 - 1 µg/mL)

Usage: Western Blot: Suggested dilution at 1 µg/mL in 5 % skim milk / PBS buffer, and HRP conjugated anti-Rabbit IgG should be diluted in 1: 50,000 - 100,000 as second antibody. ELISA titer in peptide based assay: 1:1562500.

Comment: Target Species of Antibody: Human

Restrictions: For Research Use only

Handling

Format: Lyophilized

Reconstitution: Distilled water

Concentration: Lot specific

Buffer: Lyophilized from PBS with 2 % sucrose

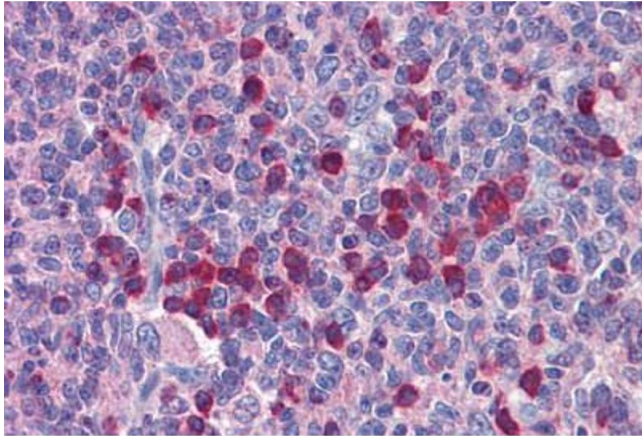
Handling Advice: Avoid repeat freeze-thaw cycles.

Storage: 4 °C, -20 °C

Handling

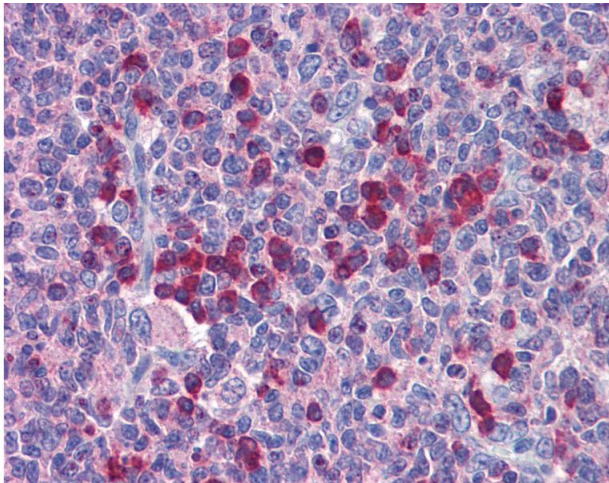
Storage Comment: Long term: -20°C, the use of 50% glycerol is recommended if storing aliquots in -20°C for long term use (up to 1 year)
Short term (less than 1 week): 4°C. Avoid freeze-thaw cycles.

Images



Immunohistochemistry (Formalin-fixed Paraffin-embedded Sections)

Image 1. Human Tonsil: Formalin-Fixed, Paraffin-Embedded (FFPE)



Immunohistochemistry

Image 2. Anti-ROBO2 antibody IHC of human tonsil. Immunohistochemistry of formalin-fixed, paraffin-embedded tissue after heat-induced antigen retrieval. Antibody concentration 5 ug/ml. This image was taken for the unconjugated form of this product. Other for ...