

Datasheet for ABIN6747100
anti-TDO2 antibody (N-Term)[Go to Product page](#)

2 Images

Overview

Quantity:	100 µL
Target:	TDO2
Binding Specificity:	N-Term
Reactivity:	Human, Dog, Monkey
Host:	Rabbit
Clonality:	Polyclonal
Conjugate:	This TDO2 antibody is un-conjugated
Application:	Western Blotting (WB), Immunohistochemistry (IHC), Immunohistochemistry (Paraffin-embedded Sections) (IHC (p))

Product Details

Brand:	IHC-plus™
Immunogen:	Synthetic peptide from N-Terminus of human TDO2 (P48775, NP_001787). Percent identity by BLAST analysis: Human, Gorilla, Gibbon, Monkey (100%), Galago, Pig (92%), Marmoset (85%). Type of Immunogen: Synthetic peptide
Isotype:	IgG
Specificity:	Human TDO2
Predicted Reactivity:	Percent identity by BLAST analysis:
Purification:	Immunoaffinity purified

Target Details

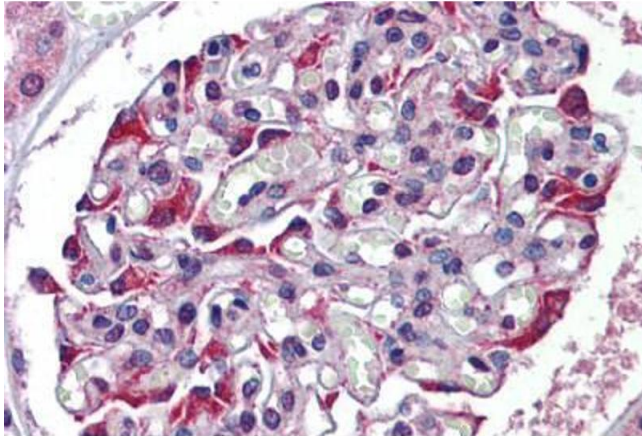
Target:	TD02
Alternative Name:	TD0 / TPH2 / TD02 (TD02 Products)
Background:	Name/Gene ID: TD02 Synonyms: TD02, TD0, TO, TRPO, Tryptophan pyrrolase, Tryptophan oxygenase, Tryptophan 2,3-dioxygenase, Tryptophanase, Tryptamin 2,3-dioxygenase
Gene ID:	6999
NCBI Accession:	NP_001787
UniProt:	P48775

Application Details

Application Notes:	Approved: IHC, IHC-P (5 µg/mL), WB (0.2 - 1 µg/mL) Usage: Western Blot: Suggested dilution at 1 µg/mL in 5 % skim milk / PBS buffer, and HRP conjugated anti-Rabbit IgG should be diluted in 1: 50,000 - 100,000 as second antibody. ELISA titer in peptide based assay: 1:312500.
Comment:	Target Species of Antibody: Human
Restrictions:	For Research Use only

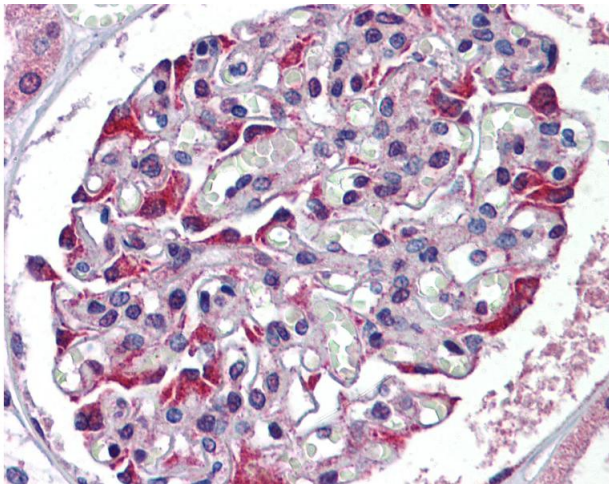
Handling

Format:	Lyophilized
Reconstitution:	Distilled water
Concentration:	Lot specific
Buffer:	Lyophilized from PBS with 2 % sucrose
Handling Advice:	Avoid repeat freeze-thaw cycles.
Storage:	4 °C,-20 °C
Storage Comment:	Long term: -20°C, the use of 50% glycerol is recommended if storing aliquots in -20°C for long term use (up to 1 year) Short term (less than 1 week): 4°C. Avoid freeze-thaw cycles.



Immunohistochemistry (Formalin-fixed Paraffin-embedded Sections)

Image 1. Human Kidney: Formalin-Fixed, Paraffin-Embedded (FFPE)



Immunohistochemistry

Image 2. Anti-TDO2 antibody IHC of human kidney. Immunohistochemistry of formalin-fixed, paraffin-embedded tissue after heat-induced antigen retrieval. Antibody concentration 5 ug/ml. This image was taken for the unconjugated form of this product. Other form ...