

Datasheet for ABIN6747102
anti-MTHFD1 antibody (AA 74-123)



[Go to Product page](#)

2 Images

Overview

Quantity:	100 µL
Target:	MTHFD1
Binding Specificity:	AA 74-123
Reactivity:	Human, Mouse, Rat, Rabbit, Zebrafish (Danio rerio), Pig, Monkey
Host:	Rabbit
Clonality:	Polyclonal
Conjugate:	This MTHFD1 antibody is un-conjugated
Application:	Western Blotting (WB), Immunohistochemistry (IHC), Immunohistochemistry (Paraffin-embedded Sections) (IHC (p))

Product Details

Brand:	IHC-plus™
Immunogen:	Synthetic peptide located between aa74-123 of human MTHFD1 (P11586, NP_005947). Percent identity by BLAST analysis: Human, Chimpanzee, Gorilla, Orangutan, Gibbon, Marmoset, Mouse, Rat (100%), Hamster, Elephant, Dog, Bovine, Bat, Horse, Guinea pig (92%), Rabbit, Pig, Zebrafish (84%). Type of Immunogen: Synthetic peptide
Isotype:	IgG
Specificity:	Human MTHFD1
Predicted Reactivity:	Percent identity by BLAST analysis: Human, Mouse, Rat (100%) Dog, Bovine, Horse, Guinea pig

Product Details

(92%) Rabbit, Pig, Zebrafish (84%).

Purification: Immunoaffinity purified

Target Details

Target: MTHFD1

Alternative Name: MTHFD1 ([MTHFD1 Products](#))

Background: Name/Gene ID: MTHFD1

Synonyms: MTHFD1, C1-THF synthase, MTHFC, MTHFD

Gene ID: 4522

NCBI Accession: [NP_005947](#)

UniProt: [P11586](#)

Pathways: [Methionine Biosynthetic Process](#)

Application Details

Application Notes: Approved: IHC, IHC-P (5 µg/mL), WB (0.2 - 1 µg/mL)

Usage: ELISA titer using peptide based assay: 1:12500. Western Blot: Suggested dilution at 1 µg/mL in 5 % skim milk / PBS buffer, and HRP conjugated anti-Rabbit IgG should be diluted in 1:50000 - 100000 as second antibody.

Comment: Target Species of Antibody: Human

Restrictions: For Research Use only

Handling

Format: Lyophilized

Reconstitution: Distilled Water.

Concentration: Lot specific

Buffer: Lyophilized from PBS with 2 % sucrose

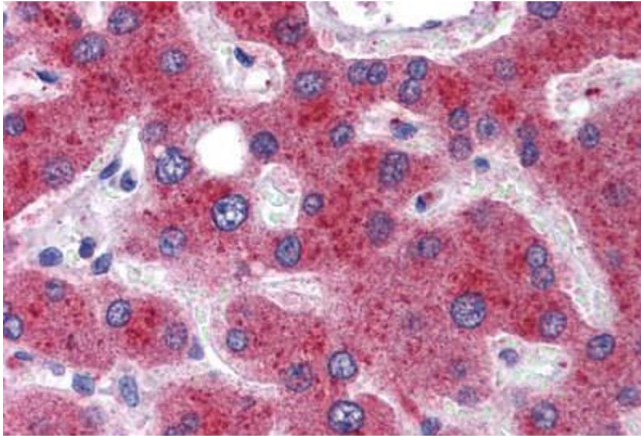
Handling Advice: Avoid repeat freeze-thaw cycles.

Storage: 4 °C, -20 °C

Handling

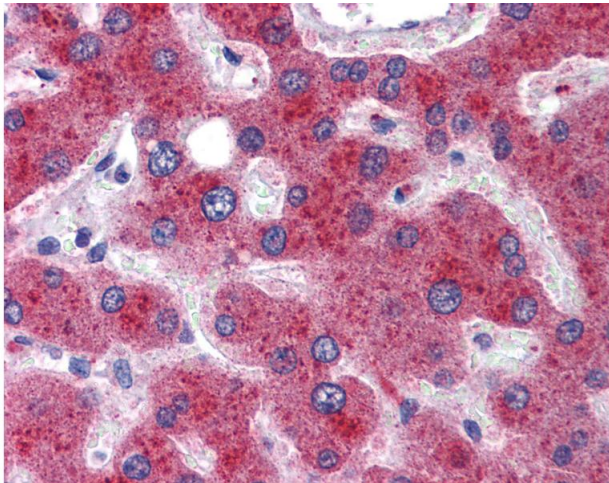
Storage Comment: Long term: -20°C, the use of 50% glycerol is recommended if storing aliquots in -20°C for long term use (up to 1 year)
Short term (less than 1 week): 4°C. Avoid freeze-thaw cycles.

Images



Immunohistochemistry (Formalin-fixed Paraffin-embedded Sections)

Image 1. Human Liver: Formalin-Fixed, Paraffin-Embedded (FFPE)



Immunohistochemistry

Image 2. Anti-MTHFD1 antibody IHC of human liver. Immunohistochemistry of formalin-fixed, paraffin-embedded tissue after heat-induced antigen retrieval. Antibody concentration 5 ug/ml. This image was taken for the unconjugated form of this product. Other for ...