

Datasheet for ABIN6747103
anti-MTHFD1 antibody (AA 863-912)[Go to Product page](#)

2 Images

Overview

| | |
|----------------------|--|
| Quantity: | 100 µL |
| Target: | MTHFD1 |
| Binding Specificity: | AA 863-912 |
| Reactivity: | Human, Mouse, Rat, Rabbit, Horse, Zebrafish (Danio rerio), Pig, Dog, Guinea Pig, Monkey, Bat |
| Host: | Rabbit |
| Clonality: | Polyclonal |
| Conjugate: | This MTHFD1 antibody is un-conjugated |
| Application: | Western Blotting (WB), Immunohistochemistry (IHC), Immunohistochemistry (Paraffin-embedded Sections) (IHC (p)) |

Product Details

| | |
|-----------------------|---|
| Brand: | IHC-plus™ |
| Immunogen: | <p>Synthetic peptide located between aa863-912 of human MTHFD1 (P11586, NP_005947).</p> <p>Percent identity by BLAST analysis: Human, Chimpanzee, Gorilla, Orangutan, Gibbon, Galago, Marmoset, Mouse, Rat, Dog, Bat, Rabbit, Horse, Pig (100%), Hamster, Bovine, Xenopus (92%), Elephant, Opossum, Guinea pig, Turkey, Zebra finch, Chicken, Slime mold (85%).</p> <p>Type of Immunogen: Synthetic peptide</p> |
| Specificity: | Human MTHFD1 |
| Predicted Reactivity: | Percent identity by BLAST analysis: Human, Mouse, Rat, Dog, Rabbit, Horse, Pig (100%) Bovine, Xenopus (92%) Guinea pig, Chicken (85%). |

Product Details

Purification: Immunoaffinity purified

Target Details

Target: MTHFD1

Alternative Name: MTHFD1 ([MTHFD1 Products](#))

Background: Name/Gene ID: MTHFD1

Synonyms: MTHFD1, C1-THF synthase, MTHFC, MTHFD

Gene ID: 4522

NCBI Accession: [NP_005947](#)

UniProt: [P11586](#)

Pathways: [Methionine Biosynthetic Process](#)

Application Details

Application Notes: Approved: IHC, IHC-P (5 µg/mL), WB (0.2 - 1 µg/mL)

Usage: Western Blot: Suggested dilution at 1 µg/mL in 5 % skim milk / PBS buffer, and HRP conjugated anti-Rabbit IgG should be diluted in 1: 50,000 - 100,000 as secondary antibody.

Comment: Target Species of Antibody: Human

Restrictions: For Research Use only

Handling

Format: Lyophilized

Reconstitution: Distilled water

Concentration: Lot specific

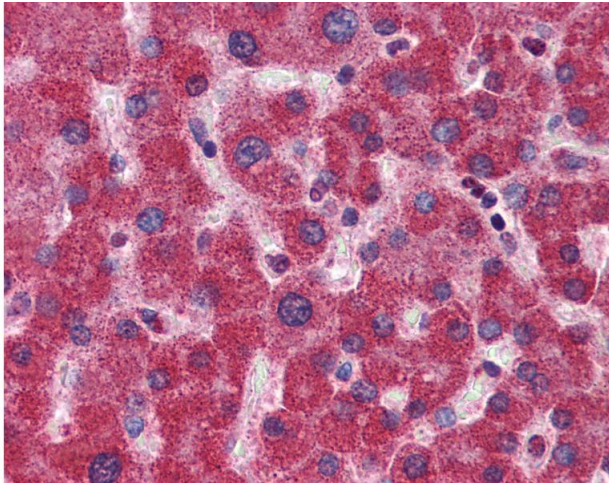
Buffer: Lyophilized from PBS with 2 % sucrose

Handling Advice: Avoid repeat freeze-thaw cycles.

Storage: 4 °C, -20 °C

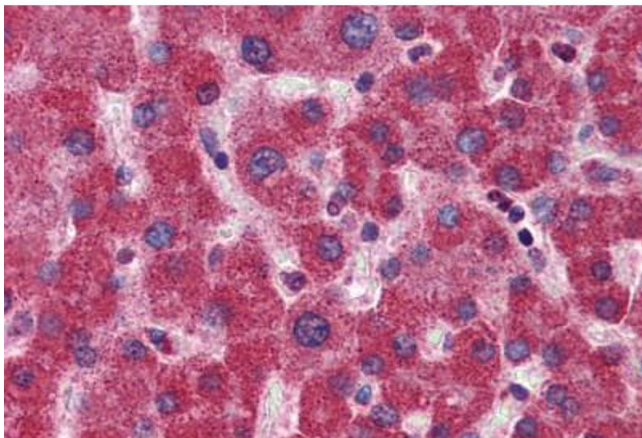
Storage Comment: Long term: -20°C, the use of 50% glycerol is recommended if storing aliquots in -20°C for long term use (up to 1 year)

Short term (less than 1 week): 4°C. Avoid freeze-thaw cycles.



Immunohistochemistry

Image 1. Anti-MTHFD1 antibody IHC of human liver. Immunohistochemistry of formalin-fixed, paraffin-embedded tissue after heat-induced antigen retrieval. Antibody concentration 5 ug/ml. This image was taken for the unconjugated form of this product. Other for ...



Immunohistochemistry (Formalin-fixed Paraffin-embedded Sections)

Image 2. Human Liver: Formalin-Fixed, Paraffin-Embedded (FFPE)