

## Datasheet for ABIN6747107 anti-ACSL5 antibody (AA 470-519)



[Go to Product page](#)

### 2 Images

#### Overview

Quantity:	100 µL
Target:	ACSL5
Binding Specificity:	AA 470-519
Reactivity:	Human, Rat, Mouse, Guinea Pig, Horse, Rabbit, Monkey, Pig
Host:	Rabbit
Clonality:	Polyclonal
Conjugate:	This ACSL5 antibody is un-conjugated
Application:	Western Blotting (WB), Immunohistochemistry (IHC), Immunohistochemistry (Paraffin-embedded Sections) (IHC (p))

#### Product Details

Brand:	IHC-plus™
Immunogen:	Synthetic peptide located between aa470-519 of human ACSL5 (Q9ULC5, NP_976313). Percent identity by BLAST analysis: Human, Gorilla, Monkey, Marmoset, Mouse, Rat (100%), Galago, Dog, Bovine, Bat, Turkey, Zebra finch, Chicken, Platypus, Lizard, Seabass, Zebrafish (92%), Gibbon, Elephant, Rabbit, Pig, Opossum, Guinea pig, Armadillo, Salmon (85%), Panda, Horse, Stickleback, Slime mold (84%).  Type of Immunogen: Synthetic peptide
Isotype:	IgG
Specificity:	Human ACSL5

## Product Details

Predicted Reactivity: Percent identity by BLAST analysis: Human, Mouse, Rat (100%) Dog, Bovine, Chicken (92%) Rabbit, Pig (85%) Horse (84%).

Purification: Immunoaffinity purified

## Target Details

Target: ACSL5

Alternative Name: ACS5 / ACSL5 ([ACSL5 Products](#))

Background: Name/Gene ID: ACSL5  
Family: Non-Protein Kinase

Synonyms: ACSL5, ACS2, ACS5, FACL5, Fatty acid coenzyme A ligase 5, Phosphatidylinositol 4-kinase, LACS 5

Gene ID: 51703

NCBI Accession: [NP\\_976313](#)

UniProt: [Q9ULC5](#)

## Application Details

Application Notes: Approved: IHC, IHC-P (5 µg/mL), WB (0.2 - 1 µg/mL)

Usage: ELISA titer using peptide based assay: 1:312500. Western Blot: Suggested dilution at 1 µg/mL in 5 % skim milk / PBS buffer, and HRP conjugated anti-Rabbit IgG should be diluted in 1:50000 - 100000 as second antibody.

Comment: Target Species of Antibody: Human

Restrictions: For Research Use only

## Handling

Format: Lyophilized

Reconstitution: Distilled Water.

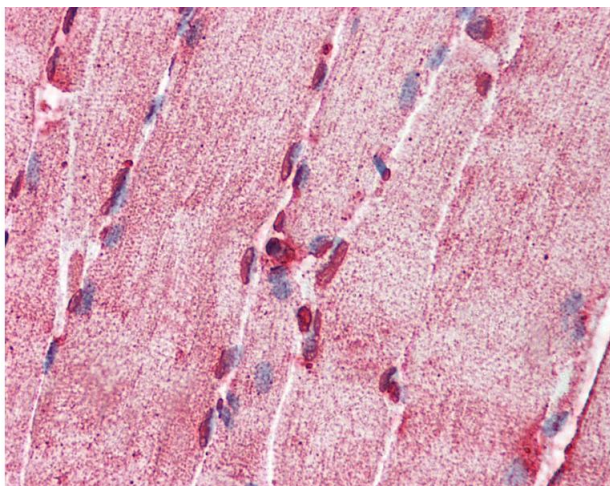
Concentration: Lot specific

Buffer: Lyophilized from PBS with 2 % sucrose

## Handling

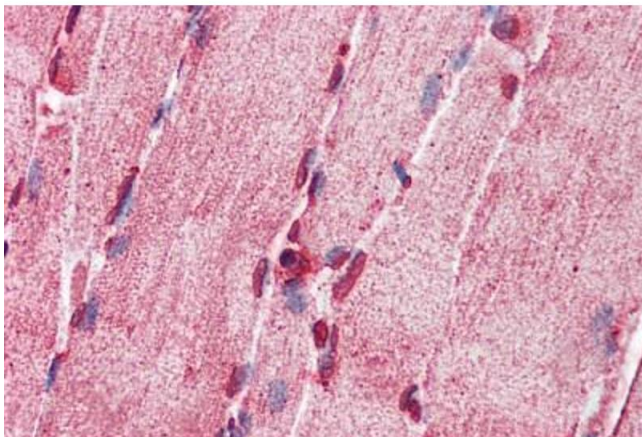
Handling Advice:	Avoid repeat freeze-thaw cycles.
Storage:	4 °C,-20 °C
Storage Comment:	Long term: -20°C, the use of 50% glycerol is recommended if storing aliquots in -20°C for long term use (up to 1 year) Short term (less than 1 week): 4°C. Avoid freeze-thaw cycles.

## Images



### Immunohistochemistry

**Image 1.** Anti-ACSL5 antibody IHC of human skeletal muscle. Immunohistochemistry of formalin-fixed, paraffin-embedded tissue after heat-induced antigen retrieval. Antibody concentration 5 ug/ml. This image was taken for the unconjugated form of this product. ...



### Immunohistochemistry (Formalin-fixed Paraffin-embedded Sections)

**Image 2.** Human Skeletal Muscle: Formalin-Fixed, Paraffin-Embedded (FFPE)