

Datasheet for ABIN6747112  
**anti-SMC3 antibody (AA 1051-1100)**

## 2 Images

[Go to Product page](#)

## Overview

Quantity:	100 µL
Target:	SMC3
Binding Specificity:	AA 1051-1100
Reactivity:	Human, Mouse, Rat, Cow, Dog, Horse, Rabbit, Zebrafish (Danio rerio), Guinea Pig, Xenopus laevis, Bat, Monkey, Pig
Host:	Rabbit
Clonality:	Polyclonal
Conjugate:	This SMC3 antibody is un-conjugated
Application:	Western Blotting (WB), Immunohistochemistry (IHC), Immunohistochemistry (Paraffin-embedded Sections) (IHC (p))

## Product Details

Brand:	IHC-plus™
Immunogen:	Synthetic peptide located between aa1051-1100 of human SMC3 (Q9UQE7). Percent identity by BLAST analysis: Human, Chimpanzee, Gorilla, Orangutan, Gibbon, Monkey, Galago, Marmoset, Mouse, Rat, Elephant, Panda, Dog, Bovine, Bat, Rabbit, Horse, Pig, Guinea pig, Xenopus (100%), Opossum, Turkey, Chicken, Platypus, Lizard (92%), Stickleback, Zebrafish (85%).  Type of Immunogen: Synthetic peptide
Isotype:	IgG
Specificity:	Human SMC3

## Product Details

Predicted Reactivity: Percent identity by BLAST analysis: Human, Mouse, Rat, Dog, Bovine, Rabbit, Horse, Pig, Xenopus (100%) Chicken (92%) Zebrafish (85%).

Purification: Immunoaffinity purified

## Target Details

Target: SMC3

Alternative Name: SMC3 / HCAP ([SMC3 Products](#))

Background: Name/Gene ID: SMC3

Synonyms: SMC3, Bamacan, CDLS3, CSPG6, HCAP, SMC-3, BAM, BMH, SMC protein 3, SMC3L1

Gene ID: 9126

UniProt: [Q9UQE7](#)

Pathways: [Stem Cell Maintenance](#)

## Application Details

Application Notes: Approved: IHC, IHC-P (5 µg/mL), WB (0.2 - 1 µg/mL)

Usage: ELISA titer using peptide based assay: 1:62500. Western Blot: Suggested dilution at 0.25 µg/mL in 5 % skim milk / PBS buffer, and HRP conjugated anti-Rabbit IgG should be diluted in 1:50000 - 100000 as second antibody.

Comment: Target Species of Antibody: Human

Restrictions: For Research Use only

## Handling

Format: Lyophilized

Reconstitution: Distilled Water.

Concentration: Lot specific

Buffer: Lyophilized from PBS with 2 % sucrose

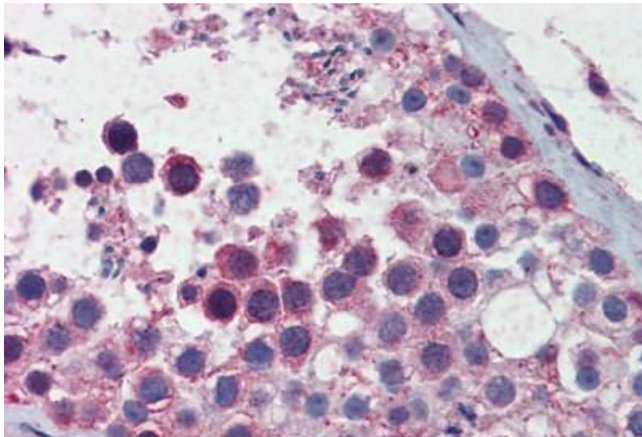
Handling Advice: Avoid repeat freeze-thaw cycles.

## Handling

Storage: 4 °C, -20 °C

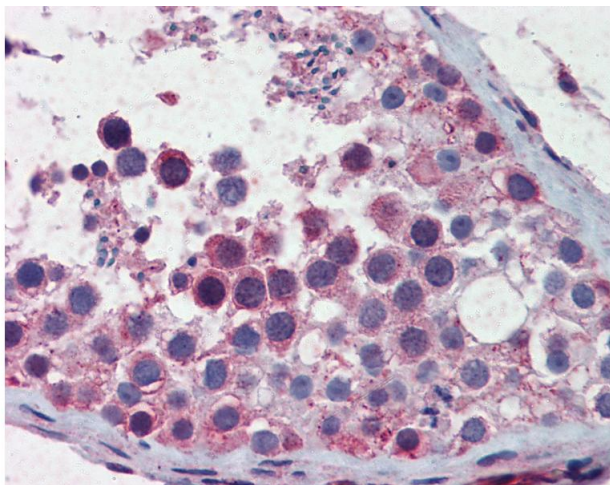
Storage Comment: Long term: -20°C, the use of 50% glycerol is recommended if storing aliquots in -20°C for long term use (up to 1 year)  
Short term (less than 1 week): 4°C. Avoid freeze-thaw cycles.

## Images



### Immunohistochemistry (Formalin-fixed Paraffin-embedded Sections)

**Image 1.** Human Testis: Formalin-Fixed, Paraffin-Embedded (FFPE)



### Immunohistochemistry

**Image 2.** Anti-SMC3 antibody IHC of human testis. Immunohistochemistry of formalin-fixed, paraffin-embedded tissue after heat-induced antigen retrieval. Antibody concentration 5 ug/ml. This image was taken for the unconjugated form of this product. Other form ...