

Datasheet for ABIN6747113
**anti-NudE Neurodevelopment Protein 1 (NDE1) (AA 218-267)
antibody**

[Go to Product page](#)

2 Images

Overview

Quantity:	100 µL
Target:	NudE Neurodevelopment Protein 1 (NDE1)
Binding Specificity:	AA 218-267
Reactivity:	Human, Mouse, Rat, Horse, Monkey, Chicken, Cow, Rabbit, Dog, Guinea Pig, Hamster
Host:	Rabbit
Clonality:	Polyclonal
Conjugate:	Un-conjugated
Application:	Western Blotting (WB), Immunohistochemistry (IHC), Immunohistochemistry (Paraffin-embedded Sections) (IHC (p))

Product Details

Brand:	IHC-plus™
Immunogen:	<p>Synthetic peptide located between aa218-267 of human NDE1 (Q9NXR1-2, NP_060138).</p> <p>Percent identity by BLAST analysis: Human, Chimpanzee, Gorilla, Gibbon, Monkey, Marmoset, Mouse, Rat, Hamster, Elephant, Dog, Bovine, Rabbit, Horse, Opossum, Guinea pig, Turkey, Zebra finch, Chicken, Platypus (100%), Orangutan, Galago, Bat, Pig, Xenopus, Zebrafish (92%), Lizard (84%).</p> <p>Type of Immunogen: Synthetic peptide</p>
Isotype:	IgG
Specificity:	Human NDE1

Product Details

Predicted Reactivity: Percent identity by BLAST analysis: Human, Mouse, Rat, Dog, Bovine, Horse, Guinea pig, Chicken (100%) Xenopus (92%) Zebrafish (85%).

Purification: Immunoaffinity purified

Target Details

Target: NudE Neurodevelopment Protein 1 (NDE1)

Alternative Name: NDE1 / NUDE ([NDE1 Products](#))

Background: Name/Gene ID: NDE1

Synonyms: NDE1, HOM-TES-87, LIS4, NUDE, NUDE1

Gene ID: 54820

NCBI Accession: [NP_060138](#)

UniProt: [Q9NXR1](#)

Pathways: [M Phase](#)

Application Details

Application Notes: Approved: IHC, IHC-P (5 µg/mL), WB (0.2 - 1 µg/mL)

Usage: ELISA titer using peptide based assay: 1:62500. Western Blot: Suggested dilution at 1 µg/mL in 5 % skim milk / PBS buffer, and HRP conjugated anti-Rabbit IgG should be diluted in 1:50000 - 100000 as second antibody.

Comment: Target Species of Antibody: Human

Restrictions: For Research Use only

Handling

Format: Lyophilized

Reconstitution: Distilled Water.

Concentration: Lot specific

Buffer: Lyophilized from PBS with 2 % sucrose

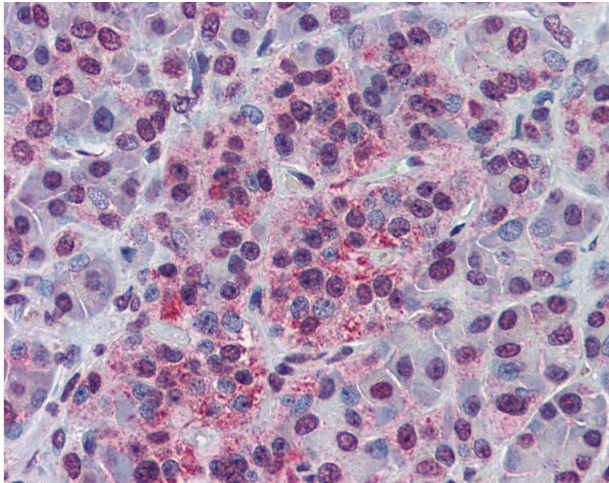
Handling Advice: Avoid repeat freeze-thaw cycles.

Handling

Storage: 4 °C, -20 °C

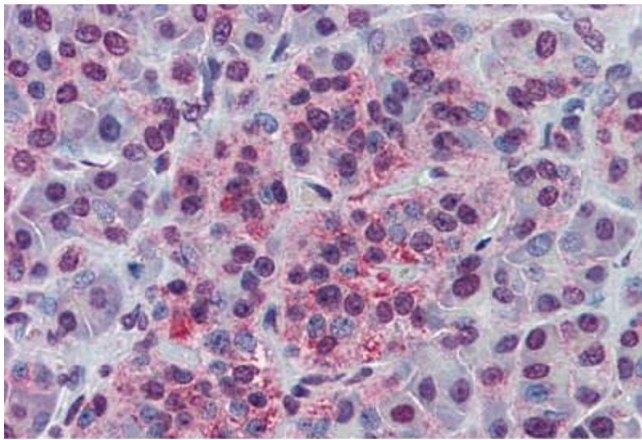
Storage Comment: Long term: -20°C, the use of 50% glycerol is recommended if storing aliquots in -20°C for long term use (up to 1 year)
Short term (less than 1 week): 4°C. Avoid freeze-thaw cycles.

Images



Immunohistochemistry

Image 1. Anti-NDE1 antibody IHC of human pancreas. Immunohistochemistry of formalin-fixed, paraffin-embedded tissue after heat-induced antigen retrieval. Antibody concentration 5 ug/ml. This image was taken for the unconjugated form of this product. Other fo ...



Immunohistochemistry (Formalin-fixed Paraffin-embedded Sections)

Image 2. Human Pancreas: Formalin-Fixed, Paraffin-Embedded (FFPE)