

Datasheet for ABIN6747117

anti-Selenoprotein S antibody (AA 72-121)**2** Images[Go to Product page](#)

Overview

Quantity:	100 µL
Target:	Selenoprotein S (SELS)
Binding Specificity:	AA 72-121
Reactivity:	Human, Rat, Dog, Monkey
Host:	Rabbit
Clonality:	Polyclonal
Conjugate:	This Selenoprotein S antibody is un-conjugated
Application:	Western Blotting (WB), Immunohistochemistry (IHC), Immunohistochemistry (Paraffin-embedded Sections) (IHC (p))

Product Details

Brand:	IHC-plus™
Immunogen:	Synthetic peptide located between aa72-121 of human VIMP (Q9BQE4, NP_060915). Percent identity by BLAST analysis: Human, Gorilla, Gibbon, Monkey, Rat (100%), Mouse, Bovine, Horse, Pig, Guinea pig (92%), Panda, Dog (85%). Type of Immunogen: Synthetic peptide
Isotype:	IgG
Specificity:	Human SELS
Predicted Reactivity:	Percent identity by BLAST analysis: Human (100%) Mouse, Bovine, Horse, Pig (92%) Rat, Dog (85%).

Product Details

Purification: Immunoaffinity purified

Target Details

Target: Selenoprotein S (SELS)

Alternative Name: SELS ([SELS Products](#))

Background: Name/Gene ID: VIMP

Synonyms: VIMP, AD-015, ADO15, SEPS1, SBB18, Selenoprotein S, SELS

Gene ID: 55829

NCBI Accession: [NP_060915](#)

UniProt: [Q9BQE4](#)

Pathways: [Cellular Response to Molecule of Bacterial Origin](#), [ER-Nucleus Signaling](#), [Regulation of Carbohydrate Metabolic Process](#), [Cell RedoxHomeostasis](#), [Negative Regulation of intrinsic apoptotic Signaling](#), [SARS-CoV-2 Protein Interactome](#)

Application Details

Application Notes: Approved: IHC, IHC-P (5 µg/mL), WB (0.2 - 1 µg/mL)

Usage: Western Blot: Suggested dilution at 1 µg/mL in 5 % skim milk / PBS buffer, and HRP conjugated anti-Rabbit IgG should be diluted in 1: 50,000 - 100,000 as second antibody. ELISA titer in peptide based assay: 1:312500.

Comment: Target Species of Antibody: Human

Restrictions: For Research Use only

Handling

Format: Lyophilized

Reconstitution: Reconstitute with 50 µL sterile ddH2O.

Concentration: Lot specific

Buffer: Lyophilized from PBS with 2 % sucrose

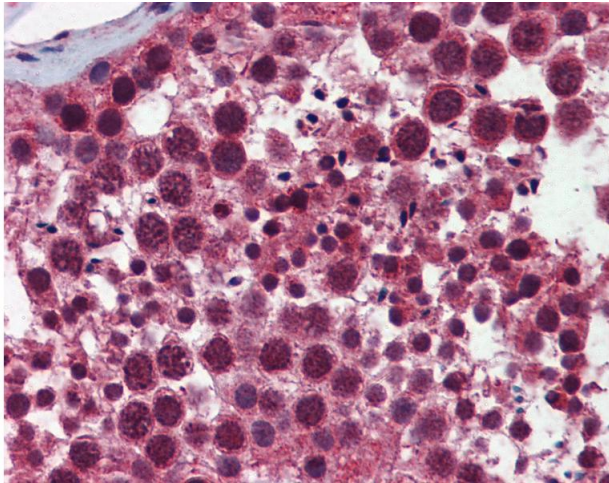
Handling Advice: Avoid repeat freeze-thaw cycles.

Handling

Storage: 4 °C, -20 °C

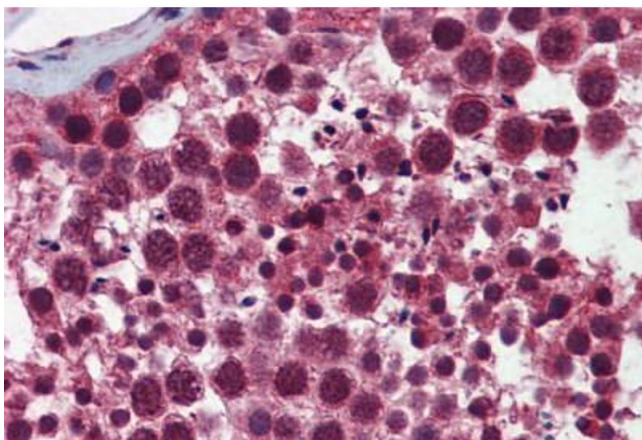
Storage Comment: Long term: -20°C, the use of 50% glycerol is recommended if storing aliquots in -20°C for long term use (up to 1 year)
Short term (less than 1 week): 4°C. Avoid freeze-thaw cycles.

Images



Immunohistochemistry

Image 1. Anti-SELS antibody IHC of human testis. Immunohistochemistry of formalin-fixed, paraffin-embedded tissue after heat-induced antigen retrieval. Antibody concentration 5 ug/ml. This image was taken for the unconjugated form of this product. Other form ...



Immunohistochemistry (Formalin-fixed Paraffin-embedded Sections)

Image 2. Human Testis: Formalin-Fixed, Paraffin-Embedded (FFPE)