

## Datasheet for ABIN6747118 anti-PGK1 antibody (AA 102-151)



[Go to Product page](#)

### 2 Images

#### Overview

Quantity:	100 µL
Target:	PGK1
Binding Specificity:	AA 102-151
Reactivity:	Human, Mouse, Rat, Cow, Sheep, Dog, Guinea Pig, Horse, Rabbit, Monkey, Bat
Host:	Rabbit
Clonality:	Polyclonal
Conjugate:	This PGK1 antibody is un-conjugated
Application:	Western Blotting (WB), Immunohistochemistry (IHC), Immunohistochemistry (Paraffin-embedded Sections) (IHC (p))

#### Product Details

Brand:	IHC-plus™
Immunogen:	Synthetic peptide located between aa102-151 of human PGK1 (P00558, NP_000282). Percent identity by BLAST analysis: Human, Chimpanzee, Gorilla, Orangutan, Gibbon, Monkey, Galago, Marmoset, Mouse, Rat, Sheep, Panda, Dog, Bovine, Bat, Rabbit, Horse, Guinea pig (100%), Hamster, Elephant, Pig, Opossum, Zebra finch, Chicken, Platypus, Xenopus, Salmon, Stickleback, Zebrafish, Mosquito (92%), Medaka, Drosophila (85%).  Type of Immunogen: Synthetic peptide
Isotype:	IgG
Specificity:	Human PGK1

## Product Details

Predicted Reactivity:	Percent identity by BLAST analysis: Human, Mouse, Rat, Sheep, Dog, Bovine, Horse, Guinea pig (100%) Pig, Chicken, Xenopus, Zebrafish (92%).
Purification:	Immunoaffinity purified

## Target Details

Target:	PGK1
Alternative Name:	PGK1/Phosphoglycerate Kinase 1 ( <a href="#">PGK1 Products</a> )
Background:	Name/Gene ID: PGK1 Subfamily: PGK Family: Non-protein Kinase  Synonyms: PGK1, MIG10, Primer recognition protein 2, PRP 2, PGKA, Phosphoglycerate kinase 1
Gene ID:	5230
NCBI Accession:	<a href="#">NP_000282</a>
UniProt:	<a href="#">P00558</a>
Pathways:	<a href="#">Cellular Glucan Metabolic Process</a>

## Application Details

Application Notes:	Approved: IHC, IHC-P (5 µg/mL), WB (0.2 - 1 µg/mL)  Usage: Western Blot: Suggested dilution at 0.5 µg/mL in 5 % skim milk / PBS buffer, and HRP conjugated anti-Rabbit IgG should be diluted in 1:50000 - 100000 as second antibody.
Comment:	Target Species of Antibody: Human
Restrictions:	For Research Use only

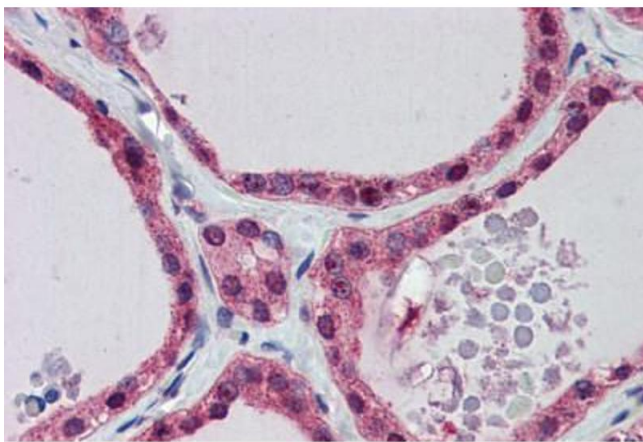
## Handling

Format:	Lyophilized
Reconstitution:	Distilled Water.
Concentration:	Lot specific

## Handling

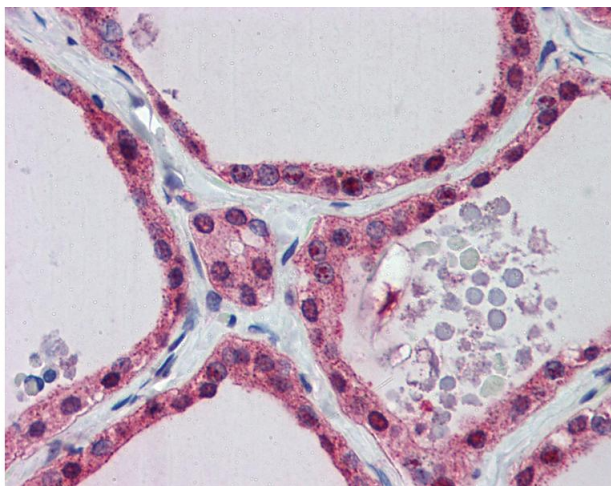
Buffer:	Lyophilized from PBS with 2 % sucrose
Handling Advice:	Avoid repeat freeze-thaw cycles.
Storage:	4 °C, -20 °C
Storage Comment:	Long term: -20°C, the use of 50% glycerol is recommended if storing aliquots in -20°C for long term use (up to 1 year) Short term (less than 1 week): 4°C. Avoid freeze-thaw cycles.

## Images



### Immunohistochemistry (Formalin-fixed Paraffin-embedded Sections)

**Image 1.** Human Thyroid: Formalin-Fixed, Paraffin-Embedded (FFPE)



### Immunohistochemistry

**Image 2.** Anti-PGK1 antibody IHC of human thyroid. Immunohistochemistry of formalin-fixed, paraffin-embedded tissue after heat-induced antigen retrieval. Antibody concentration 5 ug/ml. This image was taken for the unconjugated form of this product. Other for ...