

Datasheet for ABIN6747119
anti-EIF3E antibody (AA 36-85)

2 Images

[Go to Product page](#)

Overview

Quantity:	100 µL
Target:	EIF3E
Binding Specificity:	AA 36-85
Reactivity:	Human, Mouse, Rat, Cow, Dog, Zebrafish (Danio rerio), Horse, Rabbit, Guinea Pig, Monkey, Pig, Bat
Host:	Rabbit
Clonality:	Polyclonal
Conjugate:	This EIF3E antibody is un-conjugated
Application:	Western Blotting (WB), Immunohistochemistry (IHC), Immunohistochemistry (Paraffin-embedded Sections) (IHC (p))

Product Details

Brand:	IHC-plus™
Immunogen:	Synthetic peptide located between aa36-85 of human EIF3E (P60228, NP_001559). Percent identity by BLAST analysis: Human, Chimpanzee, Gorilla, Orangutan, Gibbon, Monkey, Galago, Marmoset, Mouse, Rat, Elephant, Panda, Dog, Bovine, Bat, Rabbit, Horse, Pig, Guinea pig, Lizard (100%), Turkey, Zebra finch, Chicken (92%), Xenopus (91%), Opossum (85%), Catfish, Smelt (83%), Stickleback (81%). Type of Immunogen: Synthetic peptide
Specificity:	Human EIF3E

Product Details

Predicted Reactivity: Percent identity by BLAST analysis: Human, Mouse, Rat, Dog, Bovine, Rabbit, Horse (100%)
Chicken (92%).

Purification: Immunoaffinity purified

Target Details

Target: EIF3E

Alternative Name: EIF3E ([EIF3E Products](#))

Background: Name/Gene ID: EIF3E

Synonyms: EIF3E, EIF3-p46, INT6, EIF-3 p48, EIF3-P48, EIF3S6

Gene ID: 3646

NCBI Accession: [NP_001559](#)

UniProt: [P60228](#)

Pathways: [Ribonucleoprotein Complex Subunit Organization](#), [Hepatitis C](#)

Application Details

Application Notes: Approved: IHC, IHC-P (5 µg/mL), WB (0.2 - 1 µg/mL)

Usage: Western Blot: Suggested dilution at 1 µg/mL in 5 % skim milk / PBS buffer, and HRP conjugated anti-Rabbit IgG should be diluted in 1: 50,000 - 100,000 as secondary antibody.

Comment: Target Species of Antibody: Human

Restrictions: For Research Use only

Handling

Format: Lyophilized

Reconstitution: Distilled water

Concentration: Lot specific

Buffer: Lyophilized from PBS with 2 % sucrose

Handling Advice: Avoid repeat freeze-thaw cycles.

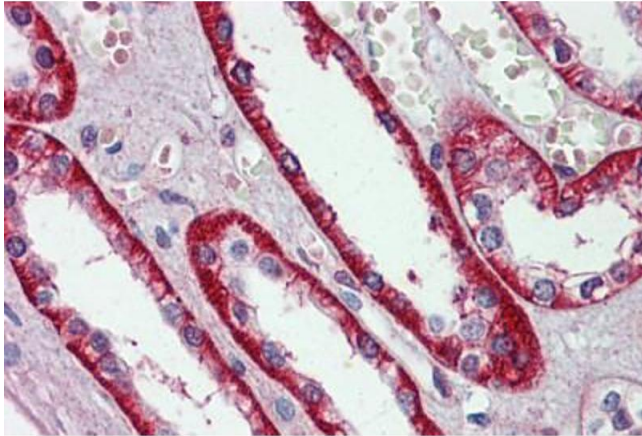
Storage: 4 °C, -20 °C

Handling

Storage Comment: Long term: -20°C, the use of 50% glycerol is recommended if storing aliquots in -20°C for long term use (up to 1 year)

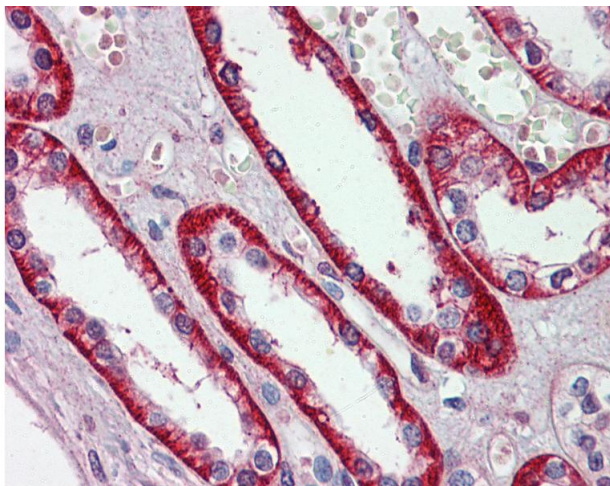
Short term (less than 1 week): 4°C. Avoid freeze-thaw cycles.

Images



Immunohistochemistry (Formalin-fixed Paraffin-embedded Sections)

Image 1. Human Kidney: Formalin-Fixed, Paraffin-Embedded (FFPE)



Immunohistochemistry

Image 2. Anti-EIF3E antibody IHC of human kidney. Immunohistochemistry of formalin-fixed, paraffin-embedded tissue after heat-induced antigen retrieval. Antibody concentration 5 ug/ml. This image was taken for the unconjugated form of this product. Other for ...