

Datasheet for ABIN6747121  
**anti-APEH antibody (AA 144-193)**

## 2 Images

[Go to Product page](#)

## Overview

Quantity:	100 µL
Target:	APEH
Binding Specificity:	AA 144-193
Reactivity:	Human, Mouse, Rat, Guinea Pig, Rabbit, Cow, Horse, Zebrafish (Danio rerio), Pig, Chicken, Hamster
Host:	Rabbit
Clonality:	Polyclonal
Conjugate:	This APEH antibody is un-conjugated
Application:	Western Blotting (WB), Immunohistochemistry (IHC), Immunohistochemistry (Paraffin-embedded Sections) (IHC (p))

## Product Details

Brand:	IHC-plus™
Immunogen:	Synthetic peptide located between aa144-193 of human APEH (P13798, NP_001631). Percent identity by BLAST analysis: Human, Chimpanzee, Gorilla, Gibbon, Marmoset, Mouse, Rat, Hamster, Bovine, Rabbit, Horse, Pig, Guinea pig, Turkey, Chicken, Lizard (100%), Monkey, Galago, Elephant, Dog, Bat, Zebra finch (92%), Xenopus, Stickleback (91%), Opossum (85%), Zebrafish (83%).  Type of Immunogen: Synthetic peptide
Isotype:	IgG

## Product Details

Specificity:	Human APEH
Predicted Reactivity:	Percent identity by BLAST analysis: Human, Mouse, Rat, Rabbit, Horse, Pig, Chicken (100%) Dog (92%) Zebrafish (83%).
Purification:	Immunoaffinity purified

## Target Details

Target:	APEH
Alternative Name:	APH / APEH ( <a href="#">APEH Products</a> )
Background:	Name/Gene ID: APEH Subfamily: Serine S9C Family: Protease  Synonyms: APEH, Acylpeptide hydrolyase, Acyl-peptide hydrolase, ACPH, DNF15S2, D3F15S2, AARE, Acylaminoacyl-peptidase, OPH, Oxidized protein hydrolase, APH, D3S48E
Gene ID:	327
NCBI Accession:	<a href="#">NP_001631</a>
UniProt:	<a href="#">P13798</a>

## Application Details

Application Notes:	Approved: IHC, IHC-P (5 µg/mL), WB (0.2 - 1 µg/mL)  Usage: Western Blot: Suggested dilution at 1 µg/mL in 5 % skim milk / PBS buffer, and HRP conjugated anti-Rabbit IgG should be diluted in 1: 50,000 - 100,000 as second antibody. ELISA titer in peptide based assay: 1:312500.
Comment:	Target Species of Antibody: Human
Restrictions:	For Research Use only

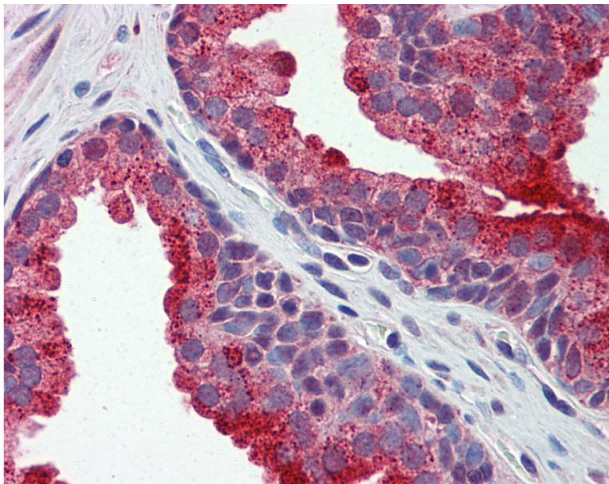
## Handling

Format:	Lyophilized
Reconstitution:	Distilled water
Concentration:	Lot specific

## Handling

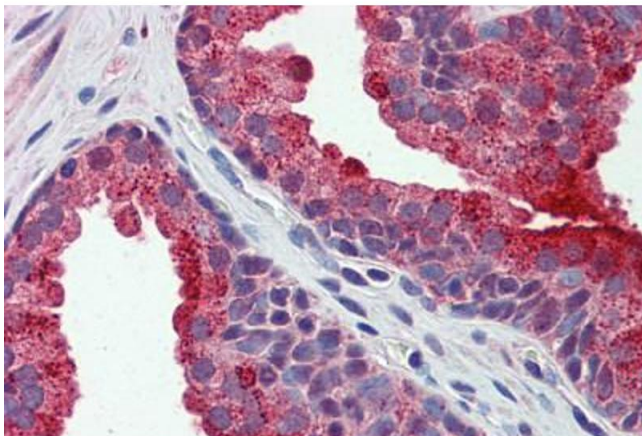
Buffer:	Lyophilized from PBS with 2 % sucrose
Handling Advice:	Avoid repeat freeze-thaw cycles.
Storage:	4 °C, -20 °C
Storage Comment:	Long term: -20°C, the use of 50% glycerol is recommended if storing aliquots in -20°C for long term use (up to 1 year) Short term (less than 1 week): 4°C. Avoid freeze-thaw cycles.

## Images



### Immunohistochemistry

**Image 1.** Anti-APEH antibody IHC of human prostate. Immunohistochemistry of formalin-fixed, paraffin-embedded tissue after heat-induced antigen retrieval. Antibody concentration 5 ug/ml. This image was taken for the unconjugated form of this product. Other fo ...



### Immunohistochemistry (Formalin-fixed Paraffin-embedded Sections)

**Image 2.** Human Prostate: Formalin-Fixed, Paraffin-Embedded (FFPE)