

Datasheet for ABIN6747123  
**anti-MYL9 antibody (C-Term)**

## 2 Images

[Go to Product page](#)

## Overview

Quantity:	100 µL
Target:	MYL9
Binding Specificity:	C-Term
Reactivity:	Human, Mouse, Rat, Cow, Pig, Dog, Horse, Rabbit, Xenopus laevis, Chicken, Guinea Pig, Sheep, Bat, Hamster, Monkey
Host:	Rabbit
Clonality:	Polyclonal
Application:	Western Blotting (WB), Immunohistochemistry (IHC), Immunohistochemistry (Paraffin-embedded Sections) (IHC (p))

## Product Details

Brand:	IHC-plus™
Immunogen:	Synthetic peptide from C-Terminus of human MYL9 (P24844, NP_006088). Percent identity by BLAST analysis: Human, Chimpanzee, Gorilla, Orangutan, Gibbon, Monkey, Galago, Marmoset, Mouse, Rat, Sheep, Hamster, Elephant, Panda, Dog, Bovine, Bat, Rabbit, Horse, Pig, Opossum, Guinea pig, Turkey, Zebra finch, Chicken, Platypus, Lizard, Xenopus, Frog (100%), Seabass, Catfish, Salmon, Smelt, Sablefish, Stickleback, Pike, Zebrafish (92%), Trout, Pufferfish (85%).  Type of Immunogen: Synthetic peptide
Isotype:	IgG
Specificity:	Human MYL9

## Product Details

Predicted Reactivity: Percent identity by BLAST analysis: Human, Mouse, Rat, Dog, Bovine, Rabbit, Pig (100%)  
Xenopus, Zebrafish (92%).

Purification: Immunoaffinity purified

## Target Details

Target: MYL9

Alternative Name: MLC2 / MYL9 ([MYL9 Products](#))

Background: Name/Gene ID: MYL9  
Family: Protein Kinase Non Catalytic

Synonyms: MYL9, 20 kDa myosin light chain, LC20, MLC-2C, MLC2, Myosin RLC, MRLC1, MYRL2

Gene ID: 10398

NCBI Accession: [NP\\_006088](#)

UniProt: [P24844](#)

## Application Details

Application Notes: Approved: IHC, IHC-P (5 µg/mL), WB (0.2 - 1 µg/mL)

Usage: ELISA titer using peptide based assay: 1:312500. Western Blot: Suggested dilution at 1 µg/mL in 5 % skim milk / PBS buffer, and HRP conjugated anti-Rabbit IgG should be diluted in 1:50000 - 100000 as second antibody.

Comment: Target Species of Antibody: Human

Restrictions: For Research Use only

## Handling

Format: Lyophilized

Reconstitution: Distilled Water.

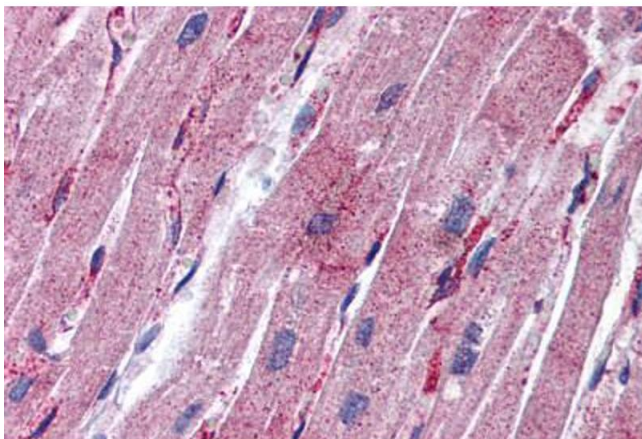
Concentration: Lot specific

Buffer: Lyophilized from PBS with 2 % sucrose

## Handling

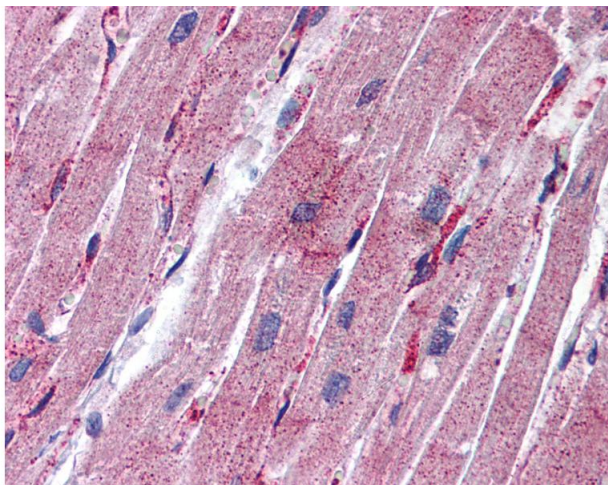
Handling Advice:	Avoid repeat freeze-thaw cycles.
Storage:	4 °C,-20 °C
Storage Comment:	Long term: -20°C, the use of 50% glycerol is recommended if storing aliquots in -20°C for long term use (up to 1 year) Short term (less than 1 week): 4°C. Avoid freeze-thaw cycles.

## Images



### Immunohistochemistry (Formalin-fixed Paraffin-embedded Sections)

**Image 1.** Human Heart: Formalin-Fixed, Paraffin-Embedded (FFPE)



### Immunohistochemistry

**Image 2.** Anti-MYL9 antibody IHC of human heart. Immunohistochemistry of formalin-fixed, paraffin-embedded tissue after heat-induced antigen retrieval. Antibody concentration 5 ug/ml. This image was taken for the unconjugated form of this product. Other forms ...