

Datasheet for ABIN6747125
anti-RHBG antibody (AA 362-411)

2 Images

[Go to Product page](#)

Overview

Quantity:	100 µL
Target:	RHBG
Binding Specificity:	AA 362-411
Reactivity:	Human, Rabbit, Rat, Cow, Guinea Pig, Horse
Host:	Rabbit
Clonality:	Polyclonal
Conjugate:	This RHBG antibody is un-conjugated
Application:	Western Blotting (WB), Immunohistochemistry (IHC), Immunohistochemistry (Paraffin-embedded Sections) (IHC (p))

Product Details

Brand:	IHC-plus™
Immunogen:	Synthetic peptide located between aa362-411 of human RHBG (Q9H310, NP_065140). Percent identity by BLAST analysis: Human, Chimpanzee, Gorilla, Orangutan, Baboon, Monkey, Rat, Elephant, Bovine, Rabbit, Guinea pig (100%), Gibbon, Marmoset, Mouse, Hamster, Pig (92%), Bat (91%), Galago, Horse, Opossum (85%). Type of Immunogen: Synthetic peptide
Isotype:	IgG
Specificity:	Human RHBG
Predicted Reactivity:	Percent identity by BLAST analysis: Human, Bovine, Rabbit (100%) Mouse, Rat, Pig (92%) Horse

Product Details

(85%).

Purification: Immunoaffinity purified

Target Details

Target: RHBG

Abstract: [RHBG Products](#)

Background: Name/Gene ID: RHBG

Synonyms: RHBG, Ammonium transporter Rh type B, Rh family type B glycoprotein, SLC42A2, Rh type B glycoprotein

Gene ID: 57127

NCBI Accession: [NP_065140](#)

UniProt: [Q9H310](#)

Application Details

Application Notes: Approved: IHC, IHC-P (5 µg/mL), WB (0.2 - 1 µg/mL)

Usage: ELISA titer using peptide based assay: 1:312500. Western Blot: Suggested dilution at 1 µg/mL in 5 % skim milk / PBS buffer, and HRP conjugated anti-Rabbit IgG should be diluted in 1:50000 - 100000 as second antibody.

Comment: Target Species of Antibody: Human

Restrictions: For Research Use only

Handling

Format: Lyophilized

Reconstitution: Distilled Water.

Concentration: Lot specific

Buffer: Lyophilized from PBS with 2 % sucrose

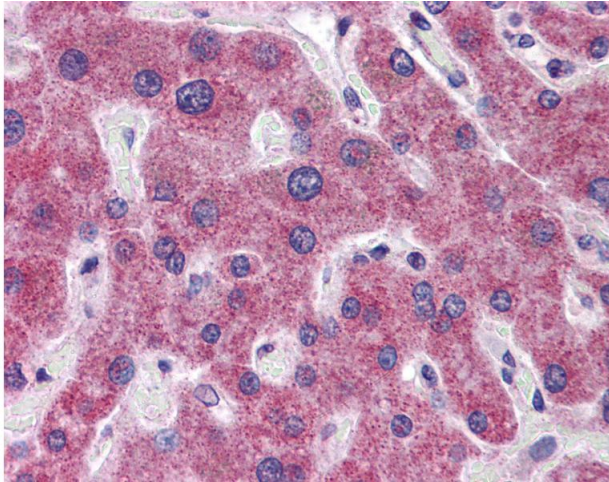
Handling Advice: Avoid repeat freeze-thaw cycles.

Storage: 4 °C, -20 °C

Handling

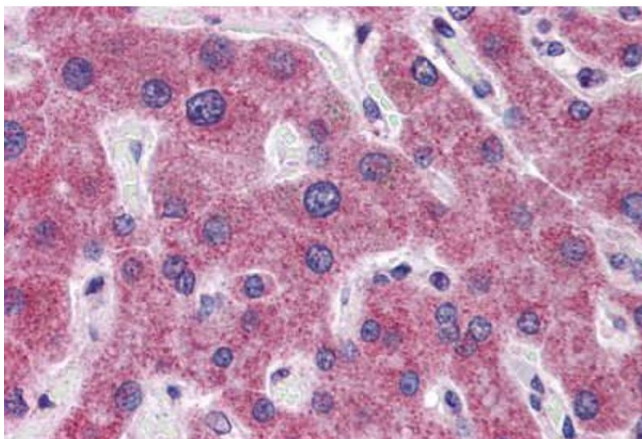
Storage Comment: Long term: -20°C, the use of 50% glycerol is recommended if storing aliquots in -20°C for long term use (up to 1 year)
Short term (less than 1 week): 4°C. Avoid freeze-thaw cycles.

Images



Immunohistochemistry

Image 1. Anti-RHBG antibody IHC of human liver. Immunohistochemistry of formalin-fixed, paraffin-embedded tissue after heat-induced antigen retrieval. Antibody concentration 5 ug/ml. This image was taken for the unconjugated form of this product. Other forms ...



Immunohistochemistry (Formalin-fixed Paraffin-embedded Sections)

Image 2. Human Liver: Formalin-Fixed, Paraffin-Embedded (FFPE)