



[Go to Product page](#)

Datasheet for ABIN6747133

anti-IL-33 antibody (AA 36-85)

2 Images

Overview

Quantity:	100 µL
Target:	IL-33 (IL33)
Binding Specificity:	AA 36-85
Reactivity:	Human, Monkey
Host:	Rabbit
Clonality:	Polyclonal
Conjugate:	This IL-33 antibody is un-conjugated
Application:	Western Blotting (WB), Immunohistochemistry (IHC), Immunohistochemistry (Paraffin-embedded Sections) (IHC (p))

Product Details

Brand:	IHC-plus™
Immunogen:	Synthetic peptide located between aa36-85 of human IL33 (O95760, NP_254274). Percent identity by BLAST analysis: Human, Chimpanzee, Gorilla, Marmoset (100%), Orangutan, Gibbon (92%). Type of Immunogen: Synthetic peptide
Isotype:	IgG
Specificity:	Human IL33 / IL-33
Predicted Reactivity:	Percent identity by BLAST analysis: Human (100%).
Purification:	Immunoaffinity purified

Target Details

Target:	IL-33 (IL33)
Alternative Name:	IL33 (IL33 Products)
Background:	Name/Gene ID: IL33 Family: Interleukin Synonyms: IL33, C9orf26, DVS27, DVS27-related protein, IL-1F11, IL-33, Interleukin-33, NFEHEV, NF-HEV, Interleukin-1 family member 11, NFHEV, IL1F11, Interleukin 33, RP11-575C20.2
Gene ID:	90865
NCBI Accession:	NP_254274
UniProt:	O95760
Pathways:	Production of Molecular Mediator of Immune Response

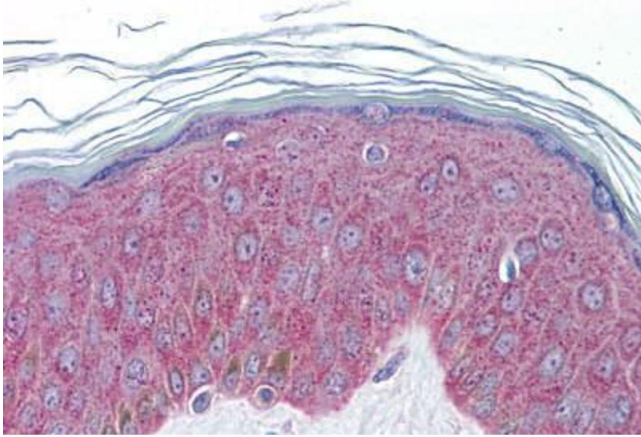
Application Details

Application Notes:	Approved: IHC, IHC-P (5 µg/mL), WB (0.2 - 1 µg/mL) Usage: Western Blot: Suggested dilution at 1 µg/mL in 5 % skim milk / PBS buffer, and HRP conjugated anti-Rabbit IgG should be diluted in 1: 50,000 - 100,000 as second antibody. ELISA titer in peptide based assay: 1:62500.
Comment:	Target Species of Antibody: Human
Restrictions:	For Research Use only

Handling

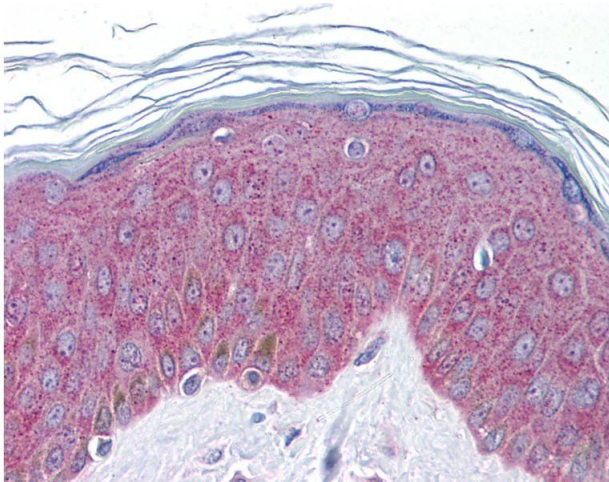
Format:	Lyophilized
Reconstitution:	Distilled water
Concentration:	Lot specific
Buffer:	Lyophilized from PBS with 2 % sucrose
Handling Advice:	Avoid repeat freeze-thaw cycles.
Storage:	4 °C,-20 °C
Storage Comment:	Long term: -20°C, the use of 50% glycerol is recommended if storing aliquots in -20°C for long term use (up to 1 year)

Short term (less than 1 week): 4°C. Avoid freeze-thaw cycles.



Immunohistochemistry (Formalin-fixed Paraffin-embedded Sections)

Image 1. Human Skin: Formalin-Fixed, Paraffin-Embedded (FFPE)



Immunohistochemistry

Image 2. Anti-IL-33 antibody IHC of human skin. Immunohistochemistry of formalin-fixed, paraffin-embedded tissue after heat-induced antigen retrieval. Antibody concentration 5 ug/ml. This image was taken for the unconjugated form of this product. Other forms ...