

Datasheet for ABIN6747137

anti-gamma 1 Adaptin antibody (AA 574-623)**2** Images[Go to Product page](#)

Overview

Quantity:	100 µL
Target:	gamma 1 Adaptin (AP1G1)
Binding Specificity:	AA 574-623
Reactivity:	Human, Mouse, Rat, Cow, Dog, Pig, Rabbit, Horse, Monkey, Bat, Hamster
Host:	Rabbit
Clonality:	Polyclonal
Conjugate:	This gamma 1 Adaptin antibody is un-conjugated
Application:	Western Blotting (WB), Immunohistochemistry (IHC), Immunohistochemistry (Paraffin-embedded Sections) (IHC (p))

Product Details

Brand:	IHC-plus™
Immunogen:	Synthetic peptide located between aa574-623 of human AP1G1 (O43747, NP_001119). Percent identity by BLAST analysis: Human, Chimpanzee, Gorilla, Orangutan, Monkey, Galago, Marmoset, Mouse, Rat, Hamster, Elephant, Dog, Bat, Rabbit, Horse, Pig, Opossum (100%), Platypus (92%), Bovine, Turkey, Chicken (85%). Type of Immunogen: Synthetic peptide
Isotype:	IgG
Specificity:	Human AP1G1 / Gamma Adaptin
Predicted Reactivity:	Percent identity by BLAST analysis: Human, Mouse, Rat, Dog, Rabbit, Horse, Pig (100%) Bovine,

Product Details

Chicken (85%).

Purification: Immunoaffinity purified

Target Details

Target: gamma 1 Adaptin (AP1G1)

Alternative Name: AP1G1 / Gamma Adaptin ([AP1G1 Products](#))

Background: Name/Gene ID: AP1G1

Synonyms: AP1G1, ADTG, AP-1 complex subunit gamma-1, CLAPG1, Gamma adaptin, Gamma1-adaptin

Gene ID: 164

NCBI Accession: [NP_001119](#)

UniProt: [O43747](#)

Application Details

Application Notes: Approved: IHC, IHC-P (2.5 µg/mL), WB (0.2 - 1 µg/mL)

Usage: ELISA titer using peptide based assay: 1:312500. Western Blot: Suggested dilution at 0.5 µg/mL in 5 % skim milk / PBS buffer, and HRP conjugated anti-Rabbit IgG should be diluted in 1:50000 - 100000 as second antibody.

Comment: Target Species of Antibody: Human

Restrictions: For Research Use only

Handling

Format: Lyophilized

Reconstitution: Distilled Water.

Concentration: Lot specific

Buffer: Lyophilized from PBS with 2 % sucrose

Handling Advice: Avoid repeat freeze-thaw cycles.

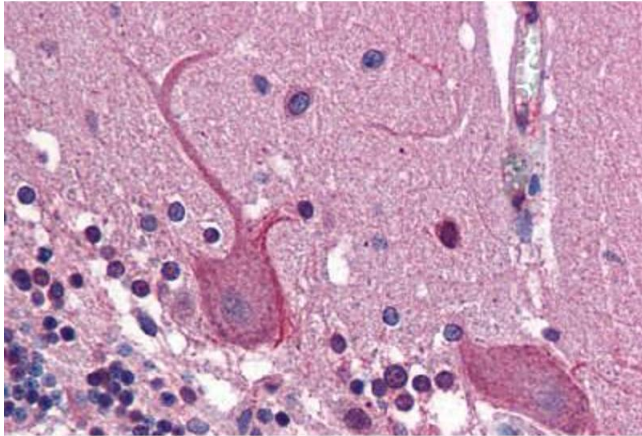
Storage: 4 °C,-20 °C

Handling

Storage Comment: Long term: -20°C, the use of 50% glycerol is recommended if storing aliquots in -20°C for long term use (up to 1 year)

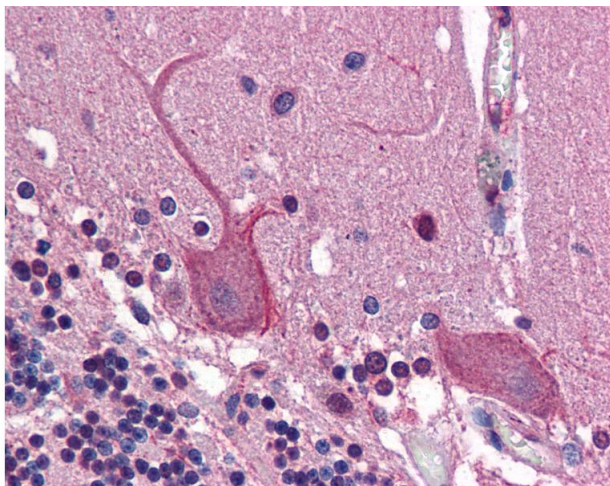
Short term (less than 1 week): 4°C. Avoid freeze-thaw cycles.

Images



Immunohistochemistry (Formalin-fixed Paraffin-embedded Sections)

Image 1. Human Brain, Cerebellum: Formalin-Fixed, Paraffin-Embedded (FFPE)



Immunohistochemistry

Image 2. Anti-AP1G1 / Gamma Adaptin antibody IHC of human brain, cerebellum. Immunohistochemistry of formalin-fixed, paraffin-embedded tissue after heat-induced antigen retrieval. Antibody concentration 2.5 ug/ml. This image was taken for the unconjugated fo ...