

Datasheet for ABIN6747138  
**anti-CPN1 antibody (AA 251-300)**



[Go to Product page](#)

2 Images

Overview

Quantity:	100 µL
Target:	CPN1
Binding Specificity:	AA 251-300
Reactivity:	Human, Mouse, Rat, Horse, Rabbit, Cow, Dog, Guinea Pig, Zebrafish (Danio rerio), Pig, Bat
Host:	Rabbit
Clonality:	Polyclonal
Conjugate:	This CPN1 antibody is un-conjugated
Application:	Western Blotting (WB), Immunohistochemistry (IHC), Immunohistochemistry (Paraffin-embedded Sections) (IHC (p))

Product Details

Brand:	IHC-plus™
Immunogen:	Synthetic peptide located between aa251-300 of human CPN1 (P15169, NP_001299). Percent identity by BLAST analysis: Human, Gorilla, Gibbon, Monkey, Galago, Mouse, Rat, Elephant, Dog, Bovine, Bat, Rabbit, Horse, Pig, Guinea pig (100%), Marmoset, Opossum, Turkey, Zebra finch, Chicken (92%), Lizard, Zebrafish (84%), Drosophila (81%).  Type of Immunogen: Synthetic peptide
Isotype:	IgG
Specificity:	Human CPN1
Predicted Reactivity:	Percent identity by BLAST analysis: Human, Dog, Rabbit, Horse, Pig, Guinea pig (100%) Chicken

## Product Details

---

(92%) Zebrafish (84%).

Purification: Immunoaffinity purified

## Target Details

---

Target: CPN1

Alternative Name: CPN1 / ACBP ([CPN1 Products](#))

Background: Name/Gene ID: CPN1  
Subfamily: Metallopeptidase M14  
Family: Exopeptidase  
  
Synonyms: CPN1, ACBP, Arginine carboxypeptidase, Anaphylatoxin inactivator, Carboxypeptidase K, Kininase-1, Lysine carboxypeptidase, Kininase I, Serum carboxypeptidase N, SCPN, Plasma carboxypeptidase B, CPN

Gene ID: 1369

NCBI Accession: [NP\\_001299](#)

UniProt: [P15169](#)

Pathways: [Metabolism of Steroid Hormones and Vitamin D](#), [Steroid Hormone Biosynthesis](#), [Peptide Hormone Metabolism](#), [Regulation of Systemic Arterial Blood Pressure by Hormones](#), [C21-Steroid Hormone Metabolic Process](#)

## Application Details

---

Application Notes: Approved: IHC, IHC-P (2.5 µg/mL), WB (0.2 - 1 µg/mL)

Usage: Western Blot: Suggested dilution at 1 µg/mL in 5 % skim milk / PBS buffer, and HRP conjugated anti-Rabbit IgG should be diluted in 1: 50,000 - 100,000 as second antibody. ELISA titer in peptide based assay: 1:1562500.

Comment: Target Species of Antibody: Human

Restrictions: For Research Use only

## Handling

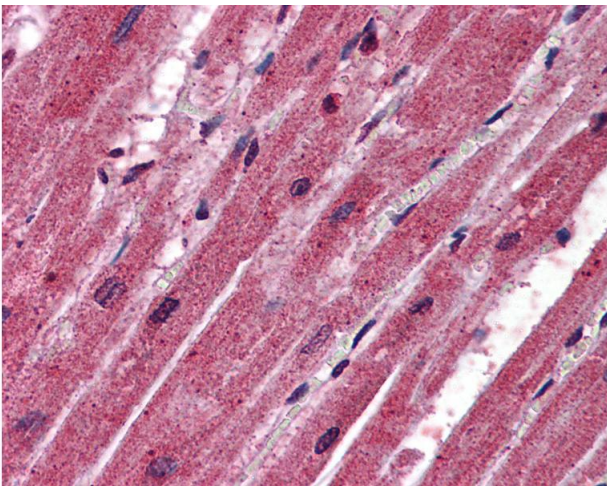
---

Format: Lyophilized

## Handling

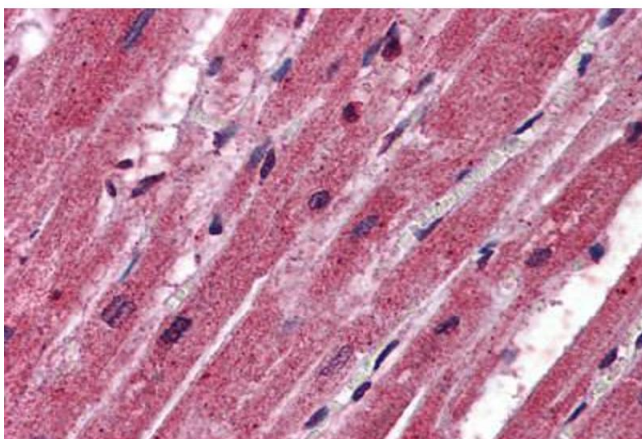
Reconstitution:	Distilled water
Concentration:	Lot specific
Buffer:	Lyophilized from PBS with 2 % sucrose
Handling Advice:	Avoid repeat freeze-thaw cycles.
Storage:	4 °C, -20 °C
Storage Comment:	Long term: -20°C, the use of 50% glycerol is recommended if storing aliquots in -20°C for long term use (up to 1 year) Short term (less than 1 week): 4°C. Avoid freeze-thaw cycles.

## Images



### Immunohistochemistry

**Image 1.** Anti-CPN1 antibody IHC of human heart. Immunohistochemistry of formalin-fixed, paraffin-embedded tissue after heat-induced antigen retrieval. Antibody concentration 2.5 ug/ml. This image was taken for the unconjugated form of this product. Other for ...



### Immunohistochemistry (Formalin-fixed Paraffin-embedded Sections)

**Image 2.** Human Heart: Formalin-Fixed, Paraffin-Embedded (FFPE)