

Datasheet for ABIN6747142
anti-DENND1B antibody (AA 108-157)[Go to Product page](#)

2 Images

Overview

Quantity:	100 µL
Target:	DENND1B
Binding Specificity:	AA 108-157
Reactivity:	Human, Rabbit, Cow, Dog
Host:	Rabbit
Clonality:	Polyclonal
Conjugate:	This DENND1B antibody is un-conjugated
Application:	Western Blotting (WB), Immunohistochemistry (IHC), Immunohistochemistry (Paraffin-embedded Sections) (IHC (p))

Product Details

Brand:	IHC-plus™
Immunogen:	Synthetic peptide located between aa108-157 of human DENND1B (Q6P3S1, NP_659414). Percent identity by BLAST analysis: Human, Chimpanzee, Bovine (100%), Gorilla, Gibbon, Monkey, Galago, Marmoset, Mouse, Horse, Pig, Guinea pig (92%), Dog, Rabbit (85%). Type of Immunogen: Synthetic peptide
Isotype:	IgG
Specificity:	Human DENND1B
Predicted Reactivity:	Percent identity by BLAST analysis: Human, Bovine (100%) Mouse, Horse, Pig, Guinea pig (92%) Dog, Rabbit (85%).

Product Details

Purification: Immunoaffinity purified

Target Details

Target: DENND1B

Alternative Name: DENND1B ([DENND1B Products](#))

Background: Name/Gene ID: DENND1B

Synonyms: DENND1B, C1ORF18, C1orf218, Connecdenn 2, DENN/MADD domain containing 1B, Protein FAM31B, FAM31B, RP11-53I24.2

Gene ID: 163486

NCBI Accession: [NP_659414](#)

UniProt: [Q6P3S1](#)

Application Details

Application Notes: Approved: IHC, IHC-P (5 µg/mL), WB (0.2 - 1 µg/mL)

Usage: Western Blot: Suggested dilution at 1 µg/mL in 5 % skim milk / PBS buffer, and HRP conjugated anti-Rabbit IgG should be diluted in 1: 50,000 - 100,000 as second antibody. ELISA titer in peptide based assay: 1:62500.

Comment: Target Species of Antibody: Human

Restrictions: For Research Use only

Handling

Format: Lyophilized

Reconstitution: Distilled water

Concentration: Lot specific

Buffer: Lyophilized from PBS with 2 % sucrose

Handling Advice: Avoid repeat freeze-thaw cycles.

Storage: 4 °C, -20 °C

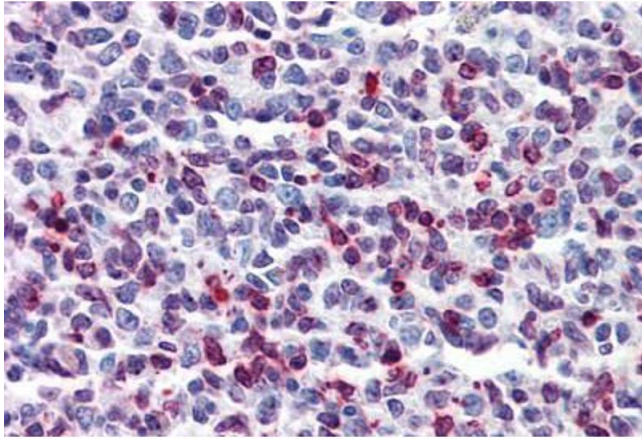
Storage Comment: Long term: -20°C, the use of 50% glycerol is recommended if storing aliquots in -20°C for long

Handling

term use (up to 1 year)

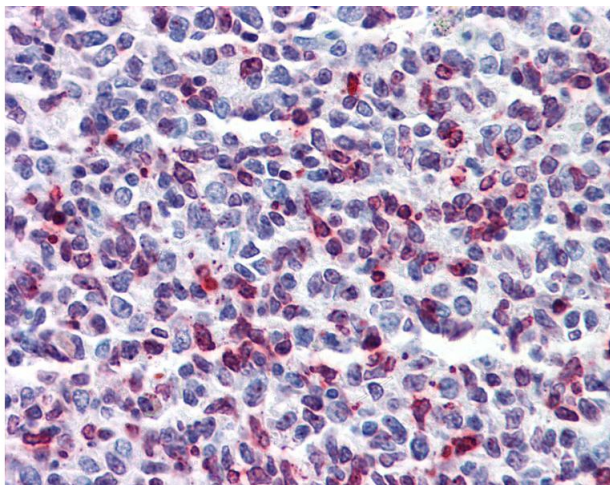
Short term (less than 1 week): 4°C. Avoid freeze-thaw cycles.

Images



Immunohistochemistry (Formalin-fixed Paraffin-embedded Sections)

Image 1. Human Tonsil: Formalin-Fixed, Paraffin-Embedded (FFPE)



Immunohistochemistry

Image 2. Anti-DENND1B antibody IHC of human tonsil. Immunohistochemistry of formalin-fixed, paraffin-embedded tissue after heat-induced antigen retrieval. Antibody concentration 5 ug/ml. This image was taken for the unconjugated form of this product. Other f ...